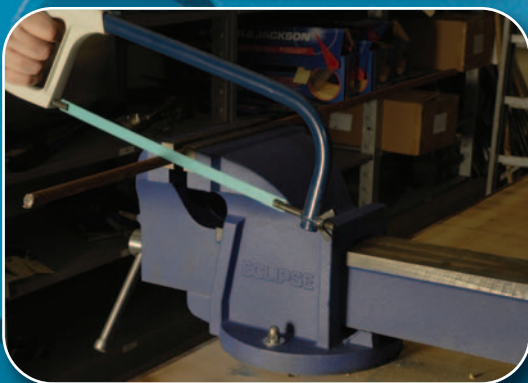


# ECLIPSE

PROFESSIONAL ENGINEERING TOOLS

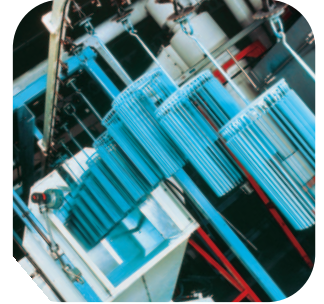


METAL CUTTING  
WORKHOLDING & GRIPPING  
ENGINEERS TOOLS  
RIVETERS  
ECLIPSE HAND TOOLS

# CONTENTS

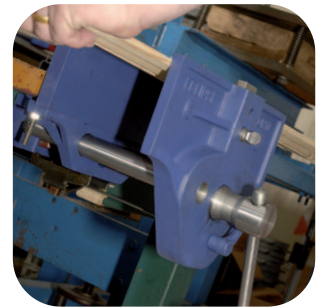
## METAL CUTTING

<b>HAND &amp; POWER HACKSAW BLADES</b>	4-6
<b>HOLESAWS &amp; ARBORS</b>	7-8
<b>SAW FRAMES &amp; SMALL SAW BLADES</b>	9-11
<b>CUTTING &amp; GRINDING ABRASIVE DISCS</b>	12-13
<b>BOLT CUTTERS</b>	14
<b>SNIPS</b>	15



## WORKHOLDING & GRIPPING

<b>MECHANICS VICES &amp; SPARES</b>	17
<b>SWIVEL BASES</b>	17
<b>WOODWORKING VICES</b>	17
<b>G-CLAMPS</b>	17
<b>ADJUSTABLE WRENCHES</b>	18
<b>SCREW CLAMPS</b>	18
<b>SASH CLAMPS</b>	18
<b>T-BAR CLAMPS</b>	18
<b>LEADER WRENCHES</b>	18
<b>STILLSON WRENCHES</b>	18



## ENGINEERS TOOLS

<b>PUNCHES</b>	20
<b>SCRAPERS/PIN VICES/CHUCKS &amp; COLLETS</b>	21
<b>NUTSPINNERS</b>	21
<b>SCRIBERS &amp; JEWELLERS SCREWDRIVERS</b>	22
<b>TOOL BITS/HOLDERS/BORING BARS</b>	23
<b>CUTTING OFF/LATHE TOOLS/HOLDERS</b>	24
<b>TAP WRENCHES &amp; ACCESSORIES</b>	25



## RIVETERS

<b>ECLIPSE SPIRALUX RIVETERS</b>	27
<b>THREADED INSERT SETTING TOOLS &amp; KITS</b>	28
<b>RIVETER KITS/SPARES/RIVETS/DEBURRING TOOLS</b>	29



## ECLIPSE HAND TOOLS & ACCESSORIES

<b>COLD CHISELS</b>	31
<b>WOOD CHISELS</b>	31
<b>ELLIOTT LUCAS PLIERS</b>	32-35
<b>SDS DRILL BITS</b>	36-38



**THE OFFICIAL MARK OF QUALITY**

Dedication to quality has earned official accreditation of the BSEN ISO 9001:2008 Quality Assurance Certificate for the general manufacture of all our hand tools. This represents another important milestone in NEILL TOOLS history, since this is internationally recognised as a mark of quality. In addition, we guarantee all our tools and products against defective workmanship and materials so you can be sure of first-class quality every time.



**HAND & POWER HACKSAW BLADES**  
**HOLESAWS & ARBORS**  
**SAW FRAMES & BLADES**  
**CUTTING & GRINDING**  
**ABRASIVES**  
**BOLT CUTTERS**  
**SNIPS**

Eclipse saw blade robot



**RESEARCH & DEVELOPMENT**

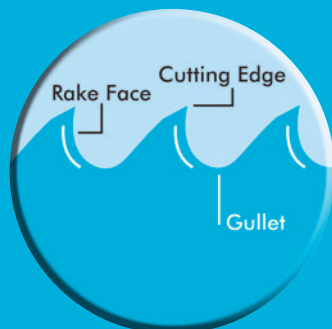
The **Eclipse Plus 30** from **Neill Tools** represents the next generation of hacksaw blades. It is a blade which can cut 30 percent faster than conventional blades because of its revolutionary blade tooth shape. Independent testing by leading UK academic institutions have confirmed the blade's improved cutting ability.

**A REVOLUTIONARY BLADE DESIGN**

Following many years of research into the most effective cutting profile possible, **Eclipse** has developed an entirely new blade tooth shape.

The **Eclipse Plus 30** has been engineered to produce the best cut

possible. That means right from the start you will notice the difference. And you will go on noticing the difference as the **Eclipse Plus 30** delivers extra performance throughout its life.



**BETTER TESTING**

Independent testing at the University of Northumbria in Newcastle has verified the claims made about the **Eclipse Plus 30**.

Using both machine and hand-testing, the **Eclipse Plus 30** has been thoroughly tested and the improvement in cutting ability has been confirmed.

Machine tests proved the increased cutting efficiency of the blade.

**THE NUMBER ONE NAME IN CUTTING POWER**

**Eclipse** have always been the number one in hacksaw blades. The new **Eclipse Plus 30** is the latest development from a company renowned for engineering excellence.

These two inset shots illustrate the difference between a ground and a milled blade under magnification.

**MILLED TOOTH SHAPE**



**NEW GROUND TOOTH SHAPE**



# HAND HACKSAW BLADES

## Plus 30 BiMetal HSS

Part No	Blade Size mm	Blade Size inches	Teeth per 25mm	PIN dia. mm	Pack Size	Pack Weight (kg)
AA3025G	250 x 12.5 x 0.63	10 x 1/2 x 0.025	18	4	100	1.63
AA3026E	250 x 12.5 x 0.63	10 x 1/2 x 0.025	24	4	100	1.63
AA3027V	250 x 12.5 x 0.63	10 x 1/2 x 0.025	32	4	100	1.63
AA3045E	300 x 12.5 x 0.63	12 x 1/2 x 0.025	18	4	100	1.90
AA3046V	300 x 12.5 x 0.63	12 x 1/2 x 0.025	24	4	100	1.90
AA3047R	300 x 12.5 x 0.63	12 x 1/2 x 0.025	32	4	100	1.90



A virtually unbreakable bimetal blade for superb cutting performance, wear resistance and safety.

The combination of an M2 High Speed ground cutting edge, electron-beam welded to a flexible alloy back, gives a level of cutting power and flexibility that is far superior to edge hardened or conventional flexible blades.

The unique ground tooth profile of the Plus 30 blade produces a faster and more aggressive cutting action that requires less effort and is more efficient than a standard blade.

Cuts through all types of materials including alloy and stainless steels.

- 30% MORE CUTTING POWER
- HIGH PERFORMANCE

## Plus 30 All Hard HSS

Part No	Blade Size mm	Blade Size inches	Teeth per 25mm	PIN dia. mm	Pack Size	Pack Weight (kg)
AE3025W	250 x 12.5 x 0.63	10 x 1/2 x 0.025	18	4	100	1.63
AE3026B	250 x 12.5 x 0.63	10 x 1/2 x 0.025	24	4	100	1.63
AE3044W	300 x 12.5 x 0.63	12 x 1/2 x 0.025	14	4	100	1.90
AE3045B	300 x 12.5 x 0.63	12 x 1/2 x 0.025	18	4	100	1.90
AE3046X	300 x 12.5 x 0.63	12 x 1/2 x 0.025	24	4	100	1.90
AE3047K	300 x 12.5 x 0.63	12 x 1/2 x 0.025	32	4	100	1.90



A rigid, All Hard ground blade, for highly accurate cutting and long life.

The All Hard blade is manufactured entirely from top quality M2 High Speed Steel, each blade is precisely hardened throughout its entire width to give a strong, rigid back, ensuring a perfectly straight cut time after time.

For the best performance from All Hard blades, the workpiece should be securely held in a clamp or vice to prevent shattering of the blade and safety goggles should be worn.

The unique ground tooth profile of the Plus 30 blade produces a faster and more aggressive cutting action that requires less effort and is more efficient than a standard blade.

- 30% MORE CUTTING POWER
- SHARPER FIRST CUT
- LONGER LIFE

## BiMetal High Speed Steel

Part No	Blade Size mm	Blade Size inches	Teeth per 25mm	PIN dia. mm	Pack Size	Pack Weight (kg)
AA45E	300 x 12.5 x 0.63	12 x 1/2 x 0.025	18	4	100	1.90
AA46V	300 x 12.5 x 0.63	12 x 1/2 x 0.025	24	4	100	1.90
AA47R	300 x 12.5 x 0.63	12 x 1/2 x 0.025	32	4	100	1.90



Cuts through all types of materials including alloys and stainless steels.

A virtually unbreakable bimetal blade for superb cutting performance, wear resistance and safety.

The combination of an M2 High Speed cutting edge, electron-beam welded to a flexible alloy back, gives a level of cutting power and flexibility that is far superior to edge hardened or conventional flexible blades.

Cuts through all types of materials including alloy and stainless steels.

- HIGH PERFORMANCE
- SHATTERPROOF BLADE

## All Hard High Speed Steel

Part No	Blade Size mm	Blade Size inches	Teeth per 25mm	PIN dia. mm	Pack Size	Pack Weight (kg)
AE44W	300x12.5x0.63	12 x 1/2 x 0.025	14	4	100	1.90
AE45B	300x12.5x0.63	12 x 1/2 x 0.025	18	4	100	1.90
AE46X	300x12.5x0.63	12 x 1/2 x 0.025	24	4	100	1.90
AE47K	300x12.5x0.63	12 x 1/2 x 0.025	32	4	100	1.90



A rigid, All Hard blade, for highly accurate cutting and long life.

Manufactured entirely from top quality High Speed Steel, each blade is precisely hardened throughout its entire width to give a strong, rigid back, ensuring a perfectly straight cut time after time.

For the best performance from All Hard blades the workpiece should be securely held in a clamp or vice to prevent shattering of the blade and safety goggles should be worn.

Cuts through all types of materials including alloy and stainless steels.

- ACCURATE CUTTING
- LONG LIFE

## Flexible High Speed Steel

Part No	Blade Size mm	Blade Size inches	Teeth per 25mm	PIN dia. mm	Pack Size	Pack Weight (kg)
AS45A	300x12.5x0.63	12 x 1/2 x 0.025	18	4	100	1.80
AS46D	300x12.5x0.63	12 x 1/2 x 0.025	24	4	100	1.80
AS47P	300x12.5x0.63	12 x 1/2 x 0.025	32	4	100	1.80



A virtually unbreakable, edge hardened blade, which offers flexibility and safety but less wear resistance than an All Hard or bimetal blade.

- EDGE HARDENED
- SHATTERPROOF BLADE
- LONGER LIFE

## Flexible Silicon Steel

Part No	Blade Size mm	Blade Size inches	Teeth per 25mm	PIN dia. mm	Pack Size	Pack Weight (kg)
AM25L	250x12.5x0.63	10 x 1/2 x 0.025	18	4	100	1.60
AM26W	250x12.5x0.63	10 x 1/2 x 0.025	24	4	100	1.60
AM44L	300x12.5x0.63	12 x 1/2 x 0.025	14	4	100	1.80
AM45W	300x12.5x0.63	12 x 1/2 x 0.025	18	4	100	1.80
AM46B	300x12.5x0.63	12 x 1/2 x 0.025	24	4	100	1.80
AM47X	300x12.5x0.63	12 x 1/2 x 0.025	32	4	100	1.80



A virtually unbreakable blade suitable for DIY use.

Manufactured from low alloy silicon steel this blade is ideal for general purpose sawing of mild steel, brass, aluminium, copper and other soft metals and plastics.

- GENERAL PURPOSE
- SHATTERPROOF BLADE



## HAND HACKSAW BLADES

### HAND BLADE TOOTH PITCH SELECTION

To select the hacksaw blade with the correct number of teeth for the task, consider the following elements:

- **How thick is the material to be cut?**  
For thin sections, the highest number of teeth should be used and vice versa for thicker sections.
- **What type of material is to be cut?**  
The table opposite is a guide to tooth pitch selection for different materials and various thicknesses.



WORKPIECE MATERIAL	WORKPIECE THICKNESS				
	mm inch	3 1/8	6 1/4	10 3/8	13 1/2
Magnesium	32				
Aluminium		24			
Free Machining		18			
Low Carbon Steels				14	
Brass, Copper, Carbon Steels, Low and Medium Carbon	32				
Structural Steels			24		
				18	
				14	
High Carbon Steels, Bronze, Tool Steels, Die Steel, Alloy Steels, Stainless Steels, Copper Alloys	32				
				24	
Malleable Cast Iron, Titanium Alloys, High Temperature Alloys (Inconel, Nimonic, Hastelloy, Incolony), Nickel Alloys (Monel, Duranickel)					18

## POWER HACKSAW BLADES

The comprehensive range of **ECLIPSE** Power Hacksaw Blades will suit virtually all popular sawing machines including the Kasto range. The continuous development of our range has improved the long-term sharpness of the blades, to reflect this advance the blades are now known as 'Super Hardened'. There is a choice of All Hard HSS or Bimetal HSS blades with a wide range of sizes and tooth pitch to cater for all varieties of materials and thickness'.

### ALL HARD HSS

- Manufactured entirely from top quality M3 High Speed Steel and hardened throughout, these blades are capable of cutting even the most difficult materials with great accuracy and combine consistent high performance with long life. This range also includes light power blades of 16mm (5/8") width.

### BI METAL HSS

- Manufactured from M3 High Speed Steel, electron beam welded to a spring steel back, these bimetal blades are able to withstand heavy feed pressures, giving economical, high cutting rates. Because these blades are virtually unbreakable in normal use, they are particularly safe and therefore suitable for use by unskilled operators or on older machines. They will cut through most types of material including alloy and stainless steels.

### TOOTH FORM

- All **Eclipse** power blades feature a regular tooth form with a full, round and smooth gullet which is ideal for use on all ferrous metals and for general purpose cutting.

### TOOTH SET

- All **Eclipse** power blades are either raker set or wavy set dependent on tooth size and blade thickness. Wavy set helps eliminate tooth stripping when sawing thin sections such as tubing and pipe, whilst raker set is ideal for the majority of other sawing tasks.

### APPROVALS AND SPECIFICATION

- All **Eclipse** power blades are manufactured to BSEN ISO 9001: 2008 quality assurance standard.

### POWER BLADE TOOTH PITCH SELECTION

- The table on the right is a guide to tooth pitch selection for different materials and various thicknesses. Also included are suggested running speeds and strokes per minute. For thinner workpieces select the faster blade speed and for thicker pieces select the slower speed.

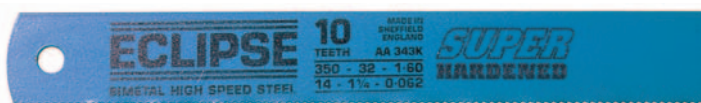
WORKPIECE MATERIAL	SPEED STROKES/Min	WORKPIECE THICKNESS						
		mm inch	13 ½	25 1	50 2	75 3	100 4	125 5
Magnesium	140-160	14						
Aluminium	100-160		10					
Free Machining Low Carbon Steels	140-160			6				4
Brass	120-150	14						
Copper	90-120		10					
Mild Steel	110-150			6				
Carbon Steels Low & Medium Carbon 90-160 Structural Steels 100-125						4		
High Carbon Steels	50-100		14					
Bronze	100-120			10				
Tool Steels	60-80				6			
Die Steels	50-75					4		
Alloy Steels	45-95							
Copper Alloys	70-120							
Malleable Cast Irons	50-90							
Titanium Alloys	50-70							
Grey Cast Irons	70-100							
High Temperature 35-75 Alloys (Inconel, Nimonic, Hastelloy, Incoloy, Waspaloy)			10					
Nickel Alloys (Monel, Duranickel)	30-60			6				
							4	

## POWER HACKSAW BLADES

### ALL HARD HSS

Manufactured entirely from top quality M3 High Speed Steel and hardened throughout, these blades are capable of cutting even the most difficult materials with great accuracy and combine consistent high performance with long life. This range also includes light power blades of 16mm (5/8") width.

Part No	Blade Size mm	Blade Size inches	Teeth per 25mm	PIN dia. mm	Pack Size	Pack Weight (kg)
AE144N	300 x 16 x 0.80	12 x 5/8 x 0.032	14	5	50	1.60
AE145L	300 x 16 x 0.80	12 x 5/8 x 0.032	18	5	50	1.60
AE146W	300 x 16 x 0.80	12 x 5/8 x 0.032	24	5	50	1.60
AE203V	300 x 25 x 1.25	12 x 1 x 0.050	10	8.2	10	0.79
AE204R	300 x 25 x 1.25	12 x 1 x 0.050	14	8.2	10	0.79
AE222B	350 x 25 x 1.25	14 x 1 x 0.050	10	8.2	10	0.94
AE223R	350 x 25 x 1.25	14 x 1 x 0.050	10	8.2	10	0.94
AE224H	350 x 25 x 1.25	14 x 1 x 0.050	14	8.2	10	0.94
AE342E	350 x 32 x 1.60	14 x 1 1/4 x 0.062	6	8.2	10	1.50
AE343V	350 x 32 x 1.60	14 x 1 1/4 x 0.062	10	8.2	10	1.50
AE344R	350 x 32 x 1.60	14 x 1 1/4 x 0.062	14	8.2	10	1.50
AE452W	350 x 38 x 2.00	14 x 1 1/2 x 0.075	6	8.2	10	1.06
AE243H	400 x 25 x 1.25	16 x 1 x 0.050	10	8.2	10	1.06
AE244M	400 x 25 x 1.25	16 x 1 x 0.050	14	8.2	10	1.06
AE352X	400 x 32 x 1.60	16 x 1 1/4 x 0.062	6	8.2	10	1.72
AE353K	400 x 32 x 1.60	16 x 1 1/4 x 0.062	10	8.2	10	1.72
AE354C	400 x 32 x 1.60	16 x 1 1/4 x 0.062	14	8.2	10	1.72
AE461T	400 x 38 x 2.00	16 x 1 1/2 x 0.075	4	8.2	10	2.50
AE462G	400 x 38 x 2.00	16 x 1 1/2 x 0.075	6	8.2	10	2.50
AE263M	425 x 25 x 1.25	17 x 1 x 0.050	10	8.2	10	1.12
AE264F	425 x 25 x 1.25	17 x 1 x 0.050	14	8.2	10	1.12
AE362V	425 x 32 x 1.60	17 x 1 1/4 x 0.062	6	8.2	10	1.80
AE363R	425 x 32 x 1.60	17 x 1 1/4 x 0.062	10	8.2	10	1.80
AE372K	450 x 32 x 1.60	18 x 1 1/4 x 0.062	6	10.2	10	1.88
AE373C	450 x 32 x 1.60	18 x 1 1/4 x 0.062	10	10.2	10	1.88
AE471W	450 x 38 x 2.00	18 x 1 1/2 x 0.075	4	10.2	10	2.68
AE472B	450 x 38 x 2.00	18 x 1 1/2 x 0.075	6	10.2	10	2.68
AE512M	450 x 45 x 2.25	18 x 1 3/4 x 0.088	6	10.2	10	3.90
AE522A	475 x 45 x 2.25	19 x 1 3/4 x 0.088	6	10.2	10	3.95
AE482E	500 x 38 x 2.00	20 x 1 1/2 x 0.075	6	10.2	10	3.00
AE492X	525 x 38 x 2.00	21 x 1 1/2 x 0.075	6	10.2	10	3.30
AE493K	525 x 38 x 2.00	21 x 1 1/2 x 0.075	10	10.2	10	3.30
AE541A	525 x 45 x 2.25	21 x 1 3/4 x 0.088	4	10.2	10	4.30
AE542D	525 x 45 x 2.25	21 x 1 3/4 x 0.088	6	10.2	10	4.30
AE622C	550 x 50 x 2.50	22 x 2 x 0.100	6	12.5	10	5.60
AE631R	575 x 50 x 2.50	23 x 2 x 0.100	4	12.5	10	5.93
AE632H	575 x 50 x 2.50	23 x 2 x 0.100	6	12.5	10	5.93
AE561D	600 x 45 x 2.25	24 x 1 3/4 x 0.088	4	12.5	10	4.90
AE562P	600 x 45 x 2.25	24 x 1 3/4 x 0.088	6	12.5	10	4.90
AE641C	600 x 50 x 2.50	24 x 2 x 0.100	4	12.5	10	6.40
AE642J	600 x 50 x 2.50	24 x 2 x 0.100	6	12.5	10	6.40
AE651H	650 x 50 x 2.50	26 x 2 x 0.100	4	12.5	10	6.96
AE652M	650 x 50 x 2.50	26 x 2 x 0.100	6	12.5	10	6.96
AE662A	700 x 50 x 2.50	28 x 2 x 0.100	6	12.5	10	7.35
AE691F	750 x 63 x 2.50	30 x 2 1/2 x 0.100	4	12.5	10	10.08



### BiMetal High Speed Steel

Manufactured from High Speed Steel, electron beam welded to a spring steel back, these bimetal blades are able to withstand heavy feed pressures, giving economical, high cutting rates. Because these blades are virtually unbreakable in normal use, they are particularly safe and therefore suitable for use by unskilled operators or on older machines. They will cut through most types of material including alloy and stainless steels.

Part No	Blade Size mm	Blade Size inches	Teeth per 25mm	PIN dia. mm	Pack Size	Pack Weight (kg)
AA203K	300 x 25 x 1.25	12 x 1 x 0.050	10	8.2	10	1.03
AA204C	300 x 25 x 1.25	12 x 1 x 0.050	14	8.2	10	1.03
AA223C	350 x 25 x 1.25	14 x 1 x 0.050	10	8.2	10	1.16
AA224J	350 x 25 x 1.25	14 x 1 x 0.050	14	8.2	10	1.16
AA342X	350 x 32 x 1.60	14 x 1 1/4 x 0.062	6	8.2	10	1.56
AA343K	350 x 32 x 1.60	14 x 1 1/4 x 0.062	10	8.2	10	1.56
AA352V	400 x 32 x 1.60	16 x 1 1/4 x 0.062	6	8.2	10	1.78
AA353R	400 x 32 x 1.60	16 x 1 1/4 x 0.062	10	8.2	10	1.78
AA462B	400 x 38 x 2.00	16 x 1 1/2 x 0.075	6	8.2	10	2.68
AA463X	400 x 38 x 2.00	16 x 1 1/2 x 0.075	10	8.2	10	2.68
AA372R	450 x 32 x 1.60	18 x 1 1/4 x 0.062	6	10.2	10	1.96
AA373H	450 x 32 x 1.60	18 x 1 1/4 x 0.062	10	10.2	10	1.96
AA472E	450 x 38 x 2.00	18 x 1 1/2 x 0.075	6	10.2	10	3.02
AA473V	450 x 38 x 2.00	18 x 1 1/2 x 0.075	10	10.2	10	3.02
AA482X	500 x 38 x 2.00	20 x 1 1/2 x 0.075	6	10.2	10	3.35
AA492V	525 x 38 x 2.00	21 x 1 1/2 x 0.075	6	10.2	10	3.52



#### STATEMENT OF CONFORMITY

Hacksaw and Power Blades - in general compliance with British Standard BS 1919 : Part 1: 1993 - Specification for hand and machine hacksaw blades.



## HOLESAWS & KITS

**ECLIPSE** bi-metal holesaws are constructed of hardened, heat and abrasive resisting M3 high speed steel teeth electron-beam welded to a tough alloy body and cap. This gives them exceptional strength, durability, shatter resistance and safety. Due to the superior and robust construction, the **Eclipse** holesaws have the capability of cutting through virtually any machineable material, including cast iron, stainless steel, brass, bronze, aluminium, plastics and wood. Available in variable 4/6 pitch teeth for all purpose application or constant 6 pitch teeth ideal for thin sheet metal application. Full range of sizes from 14mm - 152mm in vari pitch and upto 76mm in constant pitch.



- **A SHARPER, MORE ACCURATE CUT**
- **CUTS FASTER**
- **STAYS SHARPER FOR LONGER**



Available in boxed singles or 16mm - 105mm on Retail Hanging Tab.

### Recommended Cutting Speeds

Product Code BOXED	Product Code RETAIL	Diameter	Mild Steel	Tool & Stainless Steel	Cast Iron	Brass	Aluminium	Wood
EBV30-14		14mm (5/8")	550	330	400	790	900	3000
EBV30-16	EBV30-16-RET	16mm (5/8")	530	275	365	730	825	3000
EBV30-17	EBV30-17-RET	17mm (5/8")	500	250	330	665	750	3000
EBV30-19	EBV30-19-RET	19mm (3/4")	460	230	300	600	690	3000
EBV30-20	EBV30-20-RET	20mm (3/4")	460	230	300	600	690	3000
EBV30-21	EBV30-21-RET	21mm (3/4")	425	210	280	560	630	3000
EBV30-22	EBV30-22-RET	22mm (3/4")	390	195	260	520	585	3000
EBV30-24	EBV30-24-RET	24mm (3/4")	370	185	245	495	555	3000
EBV30-25	EBV30-25-RET	25mm (1")	350	175	235	470	525	2700
EBV30-27	EBV30-27-RET	27mm (1 1/8")	325	160	215	435	480	2700
EBV30-29	EBV30-29-RET	29mm (1 1/8")	300	150	200	400	450	2700
EBV30-30	EBV30-30-RET	30mm (1 1/8")	285	145	190	380	425	2400
EBV30-32	EBV30-32-RET	32mm (1 1/4")	275	140	180	360	410	2400
EBV30-33	EBV30-33-RET	33mm (1 1/4")	260	135	175	345	390	2400
EBV30-35	EBV30-35-RET	35mm (1 3/8")	250	125	165	330	375	2400
EBV30-37	EBV30-37-RET	37mm (1 3/8")	240	120	160	315	360	2400
EBV30-38	EBV30-38-RET	38mm (1 3/8")	230	115	150	300	345	2400
EBV30-40	EBV30-40-RET	40mm (1 5/8")	220	110	145	290	330	2100
EBV30-41	EBV30-41-RET	41mm (1 5/8")	210	105	140	280	315	2100
EBV30-43	EBV30-43-RET	43mm (1 5/8")	205	100	135	270	305	2100
EBV30-44	EBV30-44-RET	44mm (1 5/8")	195	95	130	260	295	2100
EBV30-46	EBV30-46-RET	46mm (1 5/8")	190	95	125	250	285	2100
EBV30-48	EBV30-48-RET	48mm (1 5/8")	180	90	120	240	270	2100
EBV30-51	EBV30-51-RET	51mm (2")	170	85	115	230	255	2000
EBV30-52	EBV30-52-RET	52mm (2")	165	80	110	220	245	2000
EBV30-54	EBV30-54-RET	54mm (2 1/8")	160	80	105	210	240	2000
EBV30-55	EBV30-55-RET	55mm (2 1/8")	150	75	100	200	230	2000
EBV30-57	EBV30-57-RET	57mm (2 1/4")	150	75	100	200	230	2000
EBV30-59	EBV30-59-RET	59mm (2 3/8")	145	75	100	195	225	2000
EBV30-60	EBV30-60-RET	60mm (2 3/8")	140	70	95	190	220	2000
EBV30-64	EBV30-64-RET	64mm (2 5/8")	135	70	90	180	205	1800
EBV30-65	EBV30-65-RET	65mm (2 5/8")	130	65	85	175	200	1800
EBV30-67	EBV30-67-RET	67mm (2 5/8")	130	65	85	170	195	1800
EBV30-68	EBV30-68-RET	68mm (2 5/8")	130	65	85	165	190	1800
EBV30-70	EBV30-70-RET	70mm (2 3/4")	125	60	80	160	185	1800
EBV30-73	EBV30-73-RET	73mm (2 3/4")	120	60	80	160	180	1800
EBV30-76	EBV30-76-RET	76mm (3")	115	55	75	150	170	1500
EBV30-79	EBV30-79-RET	79mm (3 1/8")	110	55	70	145	165	1500
EBV30-83	EBV30-83-RET	83mm (3 1/4")	105	50	70	140	155	1500
EBV30-86	EBV30-86-RET	86mm (3 3/8")	100	50	65	130	150	1200
EBV30-89	EBV30-89-RET	89mm (3 5/8")	95	45	65	125	145	1200
EBV30-92	EBV30-92-RET	92mm (3 5/8")	95	45	60	120	140	1200
EBV30-95	EBV30-95-RET	95mm (3 7/8")	90	45	60	120	135	1200
EBV30-98	EBV30-98-RET	98mm (3 7/8")	90	45	60	115	130	1200
EBV30-102	EBV30-102-RE	102mm (4")	85	40	55	115	125	1000
EBV30-105	EBV30-105-RE	105mm (4 1/8")	85	40	55	110	120	1000
EBV30-108		108mm (4 1/4")	80	40	55	110	115	900
EBV30-111		111mm (4 3/8")	80	40	50	100	110	900
EBV30-114		114mm (4 3/8")	75	35	50	100	105	900
EBV30-121		121mm (4 3/4")	70	35	45	90	95	900
EBV30-127		127mm (5")	65	30	40	85	90	900
EBV30-140		140mm (5 1/2")	60	30	35	80	85	800
EBV30-152		152mm (6")	55	25	35	75	80	800

### VARI-PITCH - All purpose Holesaws 4/6 pitch teeth

Part No	Diameter	Part No	Diameter	Part No	Diameter
EBV30-14	14mm (5/8")	EBV30-16	16mm (5/8")	EBV30-17	17mm (5/8")
EBV30-19	19mm (3/4")	EBV30-20	20mm (3/4")	EBV30-21	21mm (3/4")
EBV30-22	22mm (3/4")	EBV30-24	24mm (3/4")	EBV30-25	25mm (1")
EBV30-27	27mm (1 1/8")	EBV30-29	29mm (1 1/8")	EBV30-30	30mm (1 1/8")
EBV30-32	32mm (1 1/4")	EBV30-33	33mm (1 1/4")	EBV30-35	35mm (1 3/8")
EBV30-37	37mm (1 3/8")	EBV30-38	38mm (1 3/8")	EBV30-40	40mm (1 5/8")
EBV30-41	41mm (1 5/8")	EBV30-43	43mm (1 5/8")	EBV30-44	44mm (1 5/8")
EBV30-46	46mm (1 5/8")	EBV30-48	48mm (1 5/8")	EBV30-51	51mm (2")
EBV30-52	52mm (2")	EBV30-54	54mm (2 1/8")	EBV30-55	55mm (2 1/8")
EBV30-57	57mm (2 1/4")	EBV30-59	59mm (2 3/8")	EBV30-60	60mm (2 3/8")
EBV30-64	64mm (2 5/8")	EBV30-65	65mm (2 5/8")	EBV30-67	67mm (2 5/8")
EBV30-68	68mm (2 5/8")	EBV30-70	70mm (2 3/4")	EBV30-73	73mm (2 3/4")
EBV30-76	76mm (3")	EBV30-79	79mm (3 1/8")	EBV30-83	83mm (3 1/4")
EBV30-86	86mm (3 3/8")	EBV30-89	89mm (3 5/8")	EBV30-92	92mm (3 5/8")
EBV30-95	95mm (3 7/8")	EBV30-98	98mm (3 7/8")	EBV30-102	102mm (4")
EBV30-105	105mm (4 1/8")	EBV30-108	108mm (4 3/8")	EBV30-111	111mm (4 3/8")
EBV30-114	114mm (4 3/8")	EBV30-121	121mm (4 3/4")	EBV30-127	127mm (5")
EBV30-140	140mm (5 1/2")	EBV30-152	152mm (6")		

### CONSTANT PITCH - Thin sheet metal Holesaws constant pitch teeth

Part No	Diameter	Part No	Diameter	Part No	Diameter
EBC-16	16mm (5/8")	EBC-27	27mm (1 1/8")	EBC-60	60mm (2 3/8")
EBC-19	19mm (3/4")	EBC-32	32mm (1 1/4")	EBC-64	64mm (2 5/8")
EBC-20	20mm (3/4")	EBC-35	35mm (1 3/8")	EBC-76	76mm (3")
EBC-22	22mm (3/4")	EBC-38	38mm (1 3/8")		
EBC-25	25mm (1")	EBC-51	51mm (2")		

All packed in single units.

## BOXED HOLESAW KITS

Part No	Diameter	ELECTRICIANS KIT EE30-K	GENERAL PURPOSE KIT EGP30-K	ELECTRICIANS & PLUMBERS KIT EEP30-K
EBV30-16	16mm (5/8")	*	-	-
EBV30-20	20mm (3/4")	*	-	*
EBV30-22	22mm (3/4")	-	*	*
EBV30-25	25mm (1")	*	-	-
EBV30-29	29mm (1 1/8")	-	*	*
EBV30-32	32mm (1 1/4")	*	-	-
EBV30-35	35mm (1 3/8")	-	*	*
EBV30-38	38mm (1 3/8")	*	-	*
EBV30-44	44mm (1 5/8")	-	*	*
EBV30-51	51mm (2")	*	*	*
EBV30-57	57mm (2 1/4")	-	-	*
EBV30-64	64mm (2 5/8")	-	*	*

\* Kits packed in single units

## ARBORS & KITS

The range of Eclipse Holesaw Arbors now includes:

- Standard arbors suitable for all applicable sizes:
- New quick release (QR) variants, which simply click the pins into place.
- New SDS plus arbors suitable for Electric Hammer drills.
- A general purpose set (E-GP) which includes a variety of adaptors to fit all sizes.



Part No	Diameter	ELECTRICIANS KIT EE30-K	GENERAL PURPOSE KIT EGP30-K	ELECTRICIANS & PLUMBERS KIT EEP30-K
<b>ARBORS</b>				
E4		*	*	*
E2		*	*	*
E11		-	-	-
<b>EXTENSION</b>				
EE-12		-	-	*

\* Kits packed in single units

### ACCESSORIES

Part No	Description	Size	Pack Size
1 EE-12	Arbor Extension	300mm (12")	1
2 EN1	Arbor Adaptor	-	10
3 ED1	Pilot Drill	70mm (2 3/4")	10
4 ED2	Pilot Drill	114mm (4 1/2")	10

Drive plates are available for use with other holesaws which may not feature 'solid cap' construction, to improve stability in use.

Also available: Arbor extension rod and adaptor to reduce screw thread size and spare pilot drills.



### Arbor Selection Guide

Arbor	Holesaw Diameter	Screw Thread	Shank Type	Drill Chuck
5 E4	14mm-30mm (1/2"-1 3/8")	1/2"-20	6mm (1/4") Round	6mm (1/4")
6 E4SDS	14mm-30mm (1/2"-1 3/8")	1/2"-20	SDS plus	6mm (1/4")
7 E1	14mm-30mm (1/2"-1 3/8")	1/2" - 20	10mm (3/8") HEX	10mm (3/8")
8 E11	14mm-30mm (1/2"-1 3/8")	1/2" - 20	11mm (7/16") HEX	13mm (1/2")
9 E6	32mm-152mm (1 1/4" - 6")	5/8" - 18	11mm (7/16") HEX	13mm (1/2")
10 E2	32mm-152mm (1 1/4" - 6")	5/8" - 18	11mm (7/16") HEX	13mm (1/2")
11 E2QR	32mm-152mm (1 1/4" - 6")	5/8" - 18	11mm (7/16") HEX	13mm (1/2")
12 E2SDSQR	32mm-152mm (1 1/4" - 6")	5/8" - 18	SDS plus	6mm (1/4")
13 E3	32mm-152mm (1 1/4" - 6")	5/8" - 18	16mm (5/8") HEX	19mm (3/4")
14 E-GP	14mm-152mm (1/2" - 6")	1/2" - 20	11mm (7/16") HEX	13mm (1/2")

**High Quality,  
Hard Wearing,  
Versatile...**

**ECLIPSE  
Mechanics Vices**



- Available in 3", 4", 5", 6" and 8"

- Hardened steel replaceable jaws

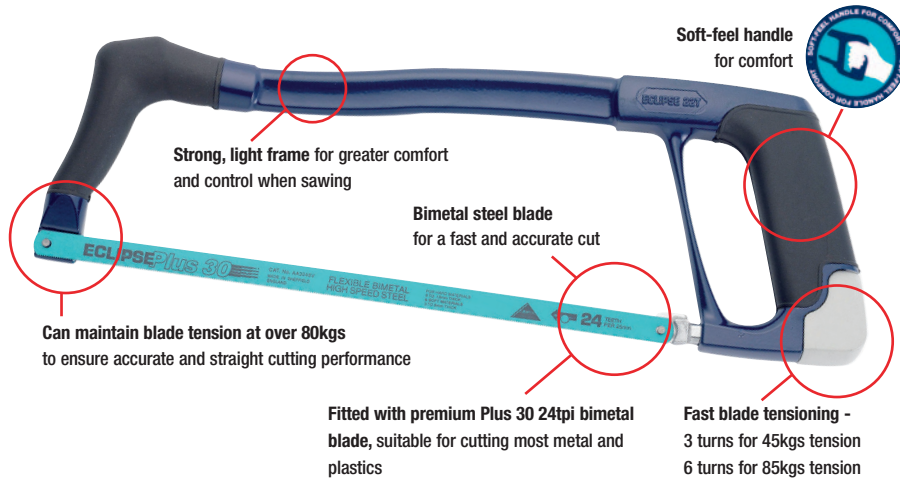
- For added safety, the tommy bar will bend before the vice becomes over-stressed

**See page 17 for full details**



## SAW FRAMES & SMALL SAW BLADES

### 70-22TR



### Replacement tubes listing

Part No	Blade Size mm	Blade Size inches	Teeth per 25mm	PIN dia. mm	Pack Size	Pack Weight (kg)
+30BM18TUBE	250 x 12.5 x 0.63	10 x 1/2 x 0.025	18	4	100	1.63
+30BM24TUBE	250 x 12.5 x 0.63	10 x 1/2 x 0.025	24	4	100	1.63
+30BM32TUBE	250 x 12.5 x 0.63	10 x 1/2 x 0.025	32	4	100	1.63
+30AH18TUBE	300 x 12.5 x 0.63	12 x 1/2 x 0.025	18	4	100	1.90
+30AH24TUBE	300 x 12.5 x 0.63	12 x 1/2 x 0.025	24	4	100	1.90
+30AH32TUBE	300 x 12.5 x 0.63	12 x 1/2 x 0.025	32	4	100	1.90



## SOFT FEEL HANDLE SAW FRAMES

### 70-22TR

Code	Description	Length	Height	Packs per outer	Box Weight (Kg)
70-22TR	Hacksaw SF	400mm(16")	132mm(5.1")	5	3.6



The new 22T has soft-feel handle, Epoxy coated moulded section steel frame and comes complete with an **ECLIPSE +30** bimetal blade.

### 70-20TSF

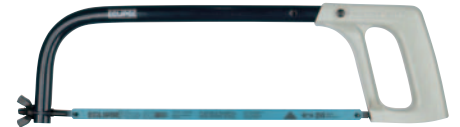
Code	Description	Length	Height	Packs per outer	Box Weight (Kg)
70-20TSF	Professional SF	460mm(18 1/4")	127mm(5")	5	2.5



The world famous, best selling hacksaw featuring a die cast handle, tubular frame complete with an **ECLIPSE +30** bimetal blade, but with the added comfort of a soft-feel handle.

### 70-20TR/20TND

Code	Description	Length	Height	Packs per outer	Box Weight (Kg)
70-20TR	Prof. Hacksaw	465mm(18 1/2")	130mm(5")	5	3.85
20TND	Prof. Hacksaw	465mm(18 1/2")	130mm(5")	20	14.75



The world famous, best selling hacksaw featuring a die cast handle, tubular frame complete with an **ECLIPSE** bimetal blade. The 20T has set the standard for all other makes - but the best is still the original 20T from **ECLIPSE**.

## SAW FRAMES

### 19TND

Code	Description	Length	Height	Packs per outer	Box Weight (Kg)
19TND	Hacksaw	420mm(16 1/2")	130mm(5")	10	4.9



As the latest addition to our world famous hacksaw range, the 19TND still offers a die cast handle and lightweight steel frame for durability, strength and control. It also includes an ergonomic frame and easy-turn moulded tension nut and comes complete with an **ECLIPSE** bimetal blade.

### 18TND

Code	Description	Length	Height	Packs per outer	Box Weight (Kg)
18TND	Hacksaw	443mm(17 3/8")	132mm(5 1/4")	10	4.4



Another new addition to our world famous range of hacksaws, the 18TND offers tremendous value for money without compromising on the strength and lightness synonymous with the **ECLIPSE** brand. Comes complete with an **ECLIPSE** bimetal blade.

### 40PG30/40PG

Code	Description	Length	Height	Packs per outer	Box Weight (Kg)
40PG30	Pistol Grip	485mm(19")	120mm(4 3/4")	5	3.50
40PG	Pistol Grip	485mm(19")	120mm(4 3/4")	5	3.50



A traditional pistol grip hacksaw with diecast handle, solid frame and an **ECLIPSE** bimetal blade.

**SAW FRAMES**

**70-400R/400ND**

Code	Description	Length	Height	Packs per outer	Box Weight (Kg)
70-400R	Handyman	400mm(15 <sup>7</sup> / <sub>8</sub> "	130mm(5 <sup>1</sup> / <sub>2</sub> "	5	4.5
400ND*	Handyman	400mm(15 <sup>7</sup> / <sub>8</sub> "	130mm(5 <sup>1</sup> / <sub>2</sub> "	20	9.20



A budget hacksaw with tubular steel frame and plastic handle supplied with an **ECLIPSE** blade.

**70-675R**

Code	Description	Length	Height	Packs per outer	Box Weight (Kg)
70-675R	Mini Saw	250mm(10")	100mm(4")	5	1.00



A more substantial version of the Junior hacksaw with plastic moulded pistol grip handle, steel frame and **ECLIPSE** blade. Blade tensioning device incorporated in the handle.

**70-14JR**

Code	Description	Length	Height	Packs per outer	Box Weight (Kg)
70-14JR	Junior	260mm(10 <sup>1</sup> / <sub>4</sub> "	67mm(2 <sup>5</sup> / <sub>8</sub> "	5	0.70



The best selling Junior Hacksaw with an epoxy coated steel frame and **ECLIPSE** metal cutting blade.

**70-130R**

Code	Description	Length	Height	Packs per outer	Box Weight (Kg)
70-130R	Pad Saw	276mm(10 <sup>7</sup> / <sub>8</sub> "	-	5	1.40



Pad saw for sawing in confined places, e.g. when cutting out keyholes or letter boxes. Diecast handle supplied with 2 blades, one for wood cutting and one for metal. The handle can hold the blade in one of two positions for maximum flexibility in use.

**72-66XR**

Code	Description	Length	Height	Packs per outer	Box Weight (Kg)
72-66XR	General Purpose	465mm(18 <sup>1</sup> / <sub>4</sub> "	-	5	2.70



General purpose saw for cutting through wood, plastics and soft metals (such as nails). Polyester coated blade and diecast 9 position handle to enable cutting in difficult positions.

**ECL98X - 22"**

Code	Description	Length	Height	Packs per outer	Box Weight (Kg)
ECL98X	Harpoint Woodsaw	560mm (22")	-	10	4.24



A general purpose hardpoint wood saw with fleam teeth for a fast cut along and across the grain. Provides a medium finish on timber, hardboard, chipboard and MDF. Duralife technology – lasts at least 20% longer than the best of the rest. Rigid back minimise 'whip' and vibration, whilst the Suregrip® soft feel handle provides a comfortable grip.

**PS51SF**

Code	Description	Length	Height	Packs per outer	Box Weight (Kg)
PS51SF	Piercing Saw SF	294mm(11 <sup>1</sup> / <sub>2</sub> "	95mm(3 <sup>3</sup> / <sub>4</sub> "	5	0.90



Piercing saw for use in fine metal work such as jewellery and dentistry, with a soft-feel handle for extra comfort and steel frame.

**70-FS1RSF**

Code	Description	Length	Height	Packs per outer	Box Weight (Kg)
70-FS1RSF	Fret Saw SF	272mm(10 <sup>3</sup> / <sub>4</sub> "	300mm(11 <sup>7</sup> / <sub>8</sub> "	5	2.05



Fretsaw for fine cutting work in thin materials such as wood, bone, plastics, etc - ideal for model makers, with a soft-feel handle for extra comfort and steel frame.

**70-CP1RSF**

Code	Description	Length	Height	Packs per outer	Box Weight (Kg)
70-CP1RSF	Coping Saw SF	317mm(12 <sup>3</sup> / <sub>8</sub> "	130mm(5 <sup>1</sup> / <sub>4</sub> "	5	1.50



Coping saw for cutting and shaping in wood, with a soft-feel handle for extra comfort and steel frame. Blades can be positioned at any angle to the frame.

**PS51**

Code	Description	Length	Height	Packs per outer	Box Weight (Kg)
PS51	Piercing Saw	292mm(11 <sup>1</sup> / <sub>2</sub> "	95mm(3 <sup>3</sup> / <sub>4</sub> "	5	0.90



Piercing saw for use in fine metal work such as jewellery and dentistry. Comfortable wooden handle and steel frame.

**70-FS1R**

Code	Description	Length	Height	Packs per outer	Box Weight (Kg)
70-FS1R	Fret	270mm(10 <sup>5</sup> / <sub>8</sub> "	300mm(11 <sup>3</sup> / <sub>8</sub> "	5	2.05



Fretsaw for fine cutting work in thin materials such as wood, bone, plastics, etc - ideal for model makers. Comfortable wooden handle and steel frame.

**70-CP1R**

Code	Description	Length	Height	Packs per outer	Box Weight (Kg)
70-CP1R	Coping	315mm(12 <sup>3</sup> / <sub>8</sub> "	130mm(5 <sup>1</sup> / <sub>4</sub> "	5	1.50



Coping saw for cutting and shaping in wood. Comfortable wooden handle and steel frame. Blades can be positioned at any angle to the frame.

**STATEMENT OF CONFORMITY**

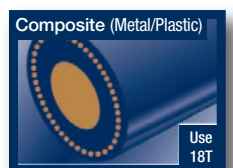
Hacksaw Frames - in general compliance with British Standard BS 7398 : 1991 - Specification for hand hacksaw frames.



**SMALL SAW BLADES**

Part No	Description	Length	Teeth per 25mm	No. of blades in pack	Pack Size	Box Weight (kg)
71-418R	Bimetal blades	300mm (12")	18	2	10	-
71-424R	Bimetal blades	300mm (12")	24	2	10	-
71-432R	Bimetal blades	300mm (12")	32	2	10	-
71-224R	Silicon blades	300mm (12")	24	5	10	-
71-132R	Junior blades	150mm (6")	32	10	10	-
1 71-114R	Junior-wood	150mm (6")	14	10	10	-
71-230R	Padsaw blades					
	- wood	254mm (10")	10	1	10	-
	- metal	203mm (8")	24	1	10	-
71-CP7R	Coping Saw blades	165mm (6½")	14	10	10	-
71-FS5R	Fretsaw blades	125mm (5")	18	10	10	-
73-66SR	GP saw spare blade	375mm (15¾")	10	1	10	-
73-77SR	GP saw wood blade	405mm (16")	7	1	10	-
FS32	Fretsaw Blades	125mm (5")	32	100	1	0.30
FS22	Fretsaw Blades	125mm (5")	22	100	1	0.30
FS18	Fretsaw Blades	125mm (5")	18	100	1	0.30
FS16	Fretsaw Blades	125mm (5")	16	100	1	0.30
PS80	Piercing Saw Blades	125mm (5")	80	100	1	0.20
PS60	Piercing Saw Blades	125mm (5")	60	100	1	0.20
PS52	Piercing Saw Blades	125mm (5")	52	100	1	0.20
PS44	Piercing Saw Blades	125mm (5")	44	100	1	0.20
PS32	Piercing Saw Blades	125mm (5")	32	100	1	0.20

*Teeth per inch guide*



**The most versatile hacksaw blade around -  
the 3-in-1 solution!**

Part No	Description	Length	Teeth per 25mm	No. of blades in pack	Pack Size	Box Weight (kg)
2 71-624R	Triple pack of Hacksaw Blades				10	0.9
	- Bimetal blades	300mm (12")	18	1	-	-
	- Bimetal blades	300mm (12")	24	1	-	-
	- Bimetal blades	300mm (12")	32	1	-	-

## CUTTING & GRINDING ABRASIVES

The **ECLIPSE** range of cutting and grinding wheels for portable and fixed machines provide superior performance in the most strict working environment. The product range includes solutions for cutting-off, grinding, and surface finishing operations on materials related to all industrial markets.



## UNDERSTANDING THE PRODUCT



## SAFETY PICTOGRAM



**WEAR GLOVES**



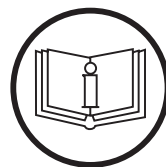
**WEAR EAR PROTECTION**



**WEAR EYE PROTECTION**



**WEAR A DUST MASK**



**READ THE INSTRUCTION**



**NOT PERMITTED FOR FACE GRINDING, CUTTING ONLY**



**DO NOT USE A DAMAGED WHEEL**

## USER SAFETY

■ Diamond tools and bonded abrasives must rotate at high speeds for efficient operation. The risk of product failure is increased with low quality products not designed and manufactured to conform to the respective standards and regulations in place. Such non conforming products may not withstand mechanical loads and heat generated during use.

### Standards for diamond tools

■ EN13236:-

In January 2001 the European standard EN13236 was introduced to govern the safety requirements for super abrasive (diamond) products. Eclipse diamond discs conform to EN13236.

### Standards for thin wheel bonded abrasives (cutting & grinding discs)

■ EN12413:-

This standard highlights that these types of cutting and grinding discs have a use by date. This "use by" date is permanently marked into the central rim of every Eclipse disc.

**oSa:-**

In the year 2000 the oSa (Organisation for Safety of Abrasives) was founded to raise standards to a higher level. All members of the oSa have to adhere to strict manufacturing, safety and quality standards that comply with the requirements of EN13236 and EN12413 and are regularly audited to ensure conformity. The oSa symbol on an abrasive or diamond disc product is a further guarantee to the user of product safety and quality.

All Eclipse discs carry the oSa symbol.



# CUTTING & GRINDING ABRASIVES

## ABRASIVE DISCS FOR STEEL

High performance range of cutting and grinding discs for steel and ferrous metals

### Flat Cutting

Description	Application	Part Ref	Dia. Inch	Dia. Metric	Thick-ness	Bore	Box Quantity
Flat	STEEL CUTTING	MCWF1152.522	4.5	115	2.5	22.2	25
Flat	STEEL CUTTING	MCWF12522	5	125	2.5	22.2	25
Flat	STEEL CUTTING	MCWF18022	7	180	2.5	22.2	25
Flat	STEEL CUTTING	MCWF23022	9	230	2.5	22.2	25
Flat	STEEL CUTTING	CSMP30020	12	300	3.5	20	25

### Depressed Centre - Cutting

Description	Application	Part Ref	Dia. Inch	Dia. Metric	Thick-ness	Bore	Box Quantity
Depressed Centre	STEEL CUTTING	MCWD11522	4.5	115	3.2	22.2	25
Depressed Centre	STEEL CUTTING	MCWD12522	5	125	3.2	22.2	25
Depressed Centre	STEEL CUTTING	MCWD18022	7	180	3.2	22.2	25
Depressed Centre	STEEL CUTTING	MCWD23022	9	230	3.2	22.2	25

### Depressed Centre - Grinding

Description	Application	Part Ref	Dia. Inch	Dia. Metric	Thick-ness	Bore	Box Quantity
Depressed Centre	STEEL GRINDING	MGWD11522	4.5	115	6	22.2	10
Depressed Centre	STEEL GRINDING	MGWD12522	5	125	6	22.2	10
Depressed Centre	STEEL GRINDING	MGWD18022	7	180	6	22.2	10
Depressed Centre	STEEL GRINDING	MGWD23022	9	230	6	22.2	10

### Super Thin Wheels - Flat Cutting

Description	Application	Part Ref	Dia. Inch	Dia. Metric	Thick-ness	Bore	Box Quantity
Flat	STEEL CUTTING	MCWF115122	4.5	115	1	22.2	25
Flat	STEEL CUTTING	MCWF2301.922	9	230	1.9	22.2	25

### Cutting - Chopsaws

Description	Application	Part Ref	Dia. Inch	Dia. Metric	Thick-ness	Bore	Box Quantity
Chop saw	STEEL CUTTING	CSMC30025	12	300	2.6	25.4	25
Chop saw	STEEL CUTTING	CSMC35025	14	350	3	25.4	25

## ABRASIVE DISCS FOR STAINLESS STEEL

Abrasive discs for cutting and grinding stainless steel

High performance range of cutting and grinding discs suitable for contamination free cutting and grinding of stainless steels

### Flat Cutting

Description	Application	Part Ref	Dia. Inch	Dia. Metric	Thick-ness	Bore	Box Quantity
Flat	STAINLESS STEEL CUTTING	ICWF11522	4.5	115	2.5	22.2	25
Flat	STAINLESS STEEL CUTTING	ICWF12522	5	125	2.5	22.2	25
Flat	STAINLESS STEEL CUTTING	ICWF18022	7	180	2.5	22.2	25
Flat	STAINLESS STEEL CUTTING	ICWF23022	9	230	2.5	22.2	25
Flat	STAINLESS STEEL CUTTING	CSIC35025	14	350	3	25.4	25

### Super Thin Wheels - Flat Cutting

Description	Application	Part Ref	Dia. Inch	Dia. Metric	Thick-ness	Bore	Box Quantity
Flat	STAINLESS STEEL CUTTING	ICWF115122	4.5	115	1	22.2	25
Flat	STAINLESS STEEL CUTTING	ICWF2301.922	9	230	1.9	22.2	25

### Depressed Centre - Grinding

Description	Application	Part Ref	Dia. Inch	Dia. Metric	Thick-ness	Bore	Box Quantity
Depressed Centre	STAINLESS STEEL GRINDING	IGWD11522	4.5	115	6	22.2	10
Depressed Centre	STAINLESS STEEL GRINDING	IGWD12522	5	125	6	22.2	10
Depressed Centre	STAINLESS STEEL GRINDING	IGWD18022	7	180	6	22.2	10
Depressed Centre	STAINLESS STEEL GRINDING	IGWD23022	9	230	6	22.2	10

## FLAP DISCS

Conical fibreglass backed flap discs suitable for surface grinding, cleaning and de-burring of cast iron, steel and stainless steel

### Aluminium Oxide - Steel Grinding

Description	Application	Part Ref	Dia. Inch	Dia. Metric	Grit	Bore	Box Quantity
Flap	STEEL GRINDING	SGFC1152240	4.5	115	40	22.2	10
Flap	STEEL GRINDING	SGFC1152260	4.5	115	60	22.2	10
Flap	STEEL GRINDING	SGFC1152280	4.5	115	80	22.2	10
Flap	STEEL GRINDING	SGFC11522100	4.5	115	100	22.2	10
Flap	STEEL GRINDING	SGFC11522120	4.5	115	120	22.2	10

### Zirconia - Stainless Steel Grinding

Description	Application	Part Ref	Dia. Inch	Dia. Metric	Grit	Bore	Box Quantity
Flap	STAINLESS STEEL GRINDING	IGFC1152240	4.5	115	40	22.2	10
Flap	STAINLESS STEEL GRINDING	IGFC1152260	4.5	115	60	22.2	10
Flap	STAINLESS STEEL GRINDING	IGFC1152280	4.5	115	80	22.2	10
Flap	STAINLESS STEEL GRINDING	IGFC11522100	4.5	115	100	22.2	10
Flap	STAINLESS STEEL GRINDING	IGFC11522120	4.5	115	120	22.2	10

## Dry Diamond Wheels

Comprehensive range of general purpose dry diamond blades with high diamond content sintered segments

### Diamond Wheel - General Purpose/Dry Stone Cutting

Description	Application	Part Ref	Dia. Inch	Dia. Metric	Bore	Box Quantity
Flat	DRY STONE CUTTING	DW11522	4.5	115	22.2	1
Flat	DRY STONE CUTTING	DW12522	5	125	22.2	1
Flat	DRY STONE CUTTING	DW18022	7	180	22.2	1
Flat	DRY STONE CUTTING	DW23022	9	230	22.2	1
Flat	DRY STONE CUTTING	DW30020	12	300	20	1
Flat	DRY STONE CUTTING	DW35025	14	350	25.4	1



## BOLT CUTTERS & AVIATION SNIPS

### Bolt Cutters - High Tensile, Tubular Handles

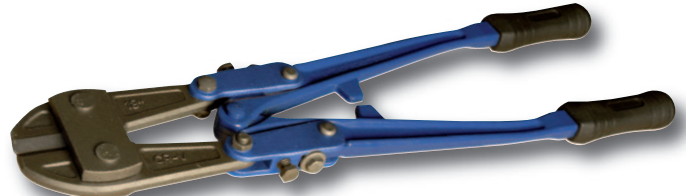


Centre cut, strap adjusted bolt cutters with lightweight tubular handles that do not compromise strength – every pound of force applied is amplified to produce 80lbs (36kg) of force between the jaws. To maximise safety the built in stops will yield rather than break, whilst the drop forged jaws are machined to precise specifications for a resilient body and rigid cutting edge

Part No	Total Length	Max. Cutting Capacity	Pack Qty
ETBC14	14" (355mm )	3/16" / 5.0mm	20
ETBC18	18" (460mm)	1/4" / 6.4mm	10
ETBC24	24" (610mm)	5/16" / 7.9mm	8
ETBC30	30" (762mm)	3/8" / 9.5mm	5
ETBC36	36" (915mm)	7/16" / 11.1mm	4

Part No	Spares For Boltcutters - Tubular Handles
ETBC14-RH2	Replacement Jaws & Strap Set 14" (355mm )
ETBC18-RH2	Replacement Jaws & Strap Set 18" (460mm)
ETBC24-RH2	Replacement Jaws & Strap Set 24" (610mm)
ETBC30-RH2	Replacement Jaws & Strap Set 30" (762mm)
ETBC36-RH2	Replacement Jaws & Strap Set 36" (915mm)

### Bolt Cutters - High Tensile, Forged Handles



Centre cut, arm adjusted bolt cutters with solid forged handles for maximum strength - every pound of force applied is amplified to produce 80lbs (36kg) of force between the jaws. To maximise safety the built in stops will yield rather than break, whilst the drop forged jaws are machined to precise specifications for a resilient body and rigid cutting edge

Part No	Total Length	Max. Cutting Capacity	Pack Qty
EFBC14	14" (355mm )	3/16" / 5.0mm	12
EFBC18	18" (460mm)	1/4" / 6.4mm	12
EFBC24	24" (610mm)	5/16" / 7.9mm	12
EFBC30	30" (762mm)	3/8" / 9.5mm	2
EFBC36	36" (915mm)	7/16" / 11.1mm	6
EFBC42	42" (1070mm)	1/2" / 13mm	4

Part No	Spares For Boltcutters - Forged Handles
EFBC14-RH	Replacement Head - 14" (355mm )
EFBC18-RH	Replacement Head - 18" (460mm)
EFBC24-RH	Replacement Head - 24" (610mm)
EFBC30-RH	Replacement Head - 30" (762mm)
EFBC36-RH	Replacement Head - 36" (915mm)
EFBC42-RH	Replacement Head - 42" (1070mm)

### End Cut Bolt Cutter - 24"/600mm



Pincer movement makes the bolt cutter ideal for cutting in restricted areas or where a side cut is difficult, eg when cutting off bolt heads. Jaws are drop forged and machined to precise specifications for a resilient body and rigid cutting edge. Solid forged handles and built in safety stops that will yield rather than break.



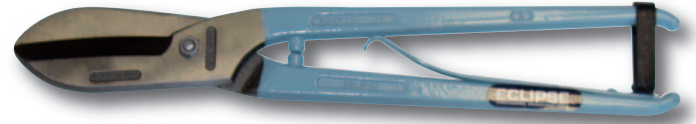
Part No	Total Length	Max. Cutting Capacity	Pack Qty
EBC-EC24	24" (600mm)	5/16" / 7.9mm	1



**GENERAL PURPOSE, JEWELLERS' & AVIATION SNIPS**

**General Purpose Snips**

**General Purpose Snips with Spring**



For cutting sheet metal. The precision hollow ground blades reduce friction for an easy cutting action and, since they are also induction hardened and tempered, they can be easily re-sharpened. The spring loaded nut allows for easy adjustment to increase the working life, whilst the high quality steel drop forged handles offer maximum strength.

For cutting sheet metal. Spring handle for ease of use during repetitive cutting. The precision hollow ground blades reduce friction for an easy cutting action and, since they are also induction hardened and tempered, they can be easily re-sharpened. The leather strap ensures safe storage.

Part No	Total Length	Cutting Capacity*	Pack Qty
ESGP-8	8" (200mm)	0.8mm	6
ESGP-10	10" (250mm)	1.0mm	6
ESGP-12	12" (300mm)	1.2mm	6
ESGP-14	14" (355mm)	1.4mm	6

\* Mild steel

Part No	Total Length	Cutting Capacity*	Pack Qty
ESGPS-8	8" (200mm)	0.8mm	6
ESGPS-10	10" (250mm)	1.0mm	6
ESGPS-12	12" (300mm)	1.2mm	6
ESGPS-14	14" (355mm)	1.4mm	6

\* Mild steel

**Jewellers' Snips**

**Aviation Snips**

**For Cutting Copper, Silver and Gold**



For cutting copper, silver and gold. The precision hollow ground blades reduce friction for an easy cutting action and, since they are also induction hardened and tempered, they can be easily re-sharpened. Integrated stops prevent trapped fingers without compromising the jaw capacity.

Cuts up to 1.2mm cold rolled steel and 0.7mm stainless steel. Drop forged alloy steel blades give a longer cutting life, whilst the spring loaded handles ensure a fast, smooth cutting action.

Part No	Description	Total Length	Barcode	Pack Qty
ESJ-7S	Jewellers' Snips (straight blade)	7" / 180mm	5012095 066118	10
ESJ-7C	Jewellers' Snips (curved blade)	7" / 180mm	5012095 066125	10

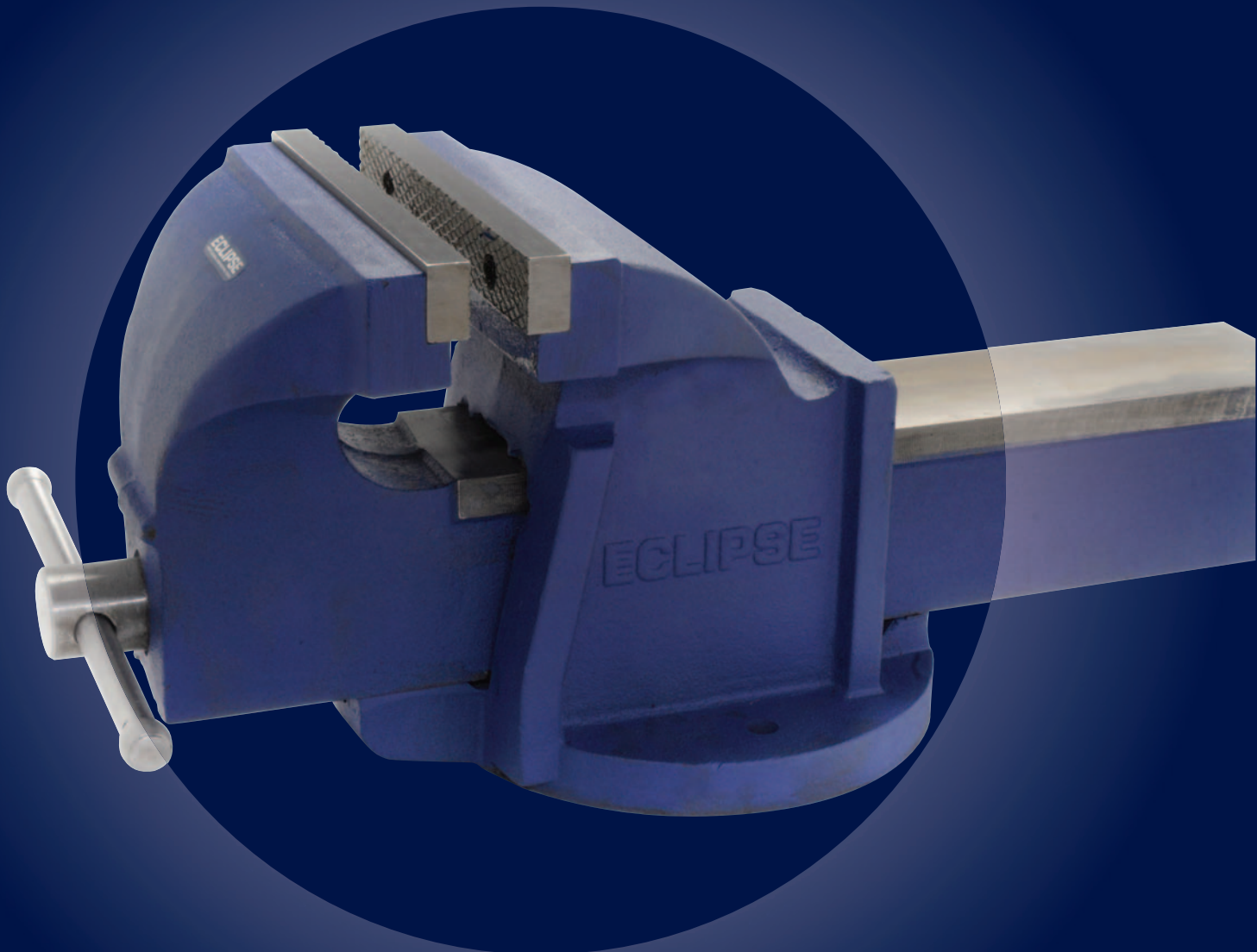
**PACKAGING**

- Half sized transparent case allows the user to handle the snips and test the cutting action
- Small packaging size minimises space wastage and the security tie limits the risk of theft
- Durability of the case prevents damage to the blades and provides an ideal storage facility for the snips



	Description	Barcode	Pack Qty
EAS-L	Aviation Snips - Left and Straight Cut	5012095 069669	6
EAS-R	Aviation Snips - Right and Straight Cut	5012095 069676	6
EAS-S	Aviation Snips - Straight and Wide Curves	5012095 069683	6
EAS-SL	Aviation Snips - Extra Cut S/Wide Curves	5012095 069690	6

**MECHANICS' VICES  
SWIVEL BASES  
WOODWORKING VICES  
G-CLAMPS  
ADJUSTABLE WRENCHES  
SCREW CLAMPS  
SASH CLAMPS  
T-BAR CLAMPS  
LEADER PATTERN PIPE WRENCHES  
STILLSON PATTERN PIPE WRENCHES**





**Mechanics' Vices**

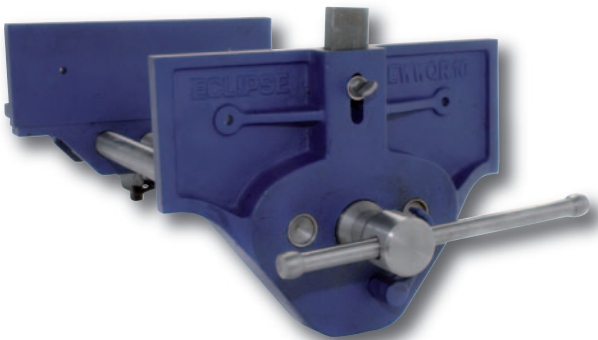
**FOR GENERAL METALWORKING APPLICATIONS**



The body and sliding jaw are manufactured from high quality grey cast iron, which has excellent shock absorbing qualities. The precision milled slide ensures a fast, smooth operation, whilst the fused tommy bar will bend before the vice can become over-stressed. Includes hardened steel replaceable jaws and fixing holes for bench mounting.

Part No	Jaw Width	Throat Depth (mm)	Opening (mm)	Clamping Force (kN)	Net Weight (kg)	Qty per pallet
EMV-1	3"/ 75mm	48	82	20	4.8	144
EMV-3	4"/ 100mm	63	109	25	9.3	90
EMV-5	5"/ 125mm	73	136	30	15.8	40
EMV-6	6"/ 150mm	86	168	35	24.2	36
EMV-8	8"/ 200mm	103	208	45	38.1	24

**Quick Release Woodworking Vices**



Quick release trigger opens and closes the vice quickly without using the mainscrew. Fitted with an adjustable front stop – or dog – that gives an additional clamping facility when used with a bench stop, to provide a normal vice and a tail vice in one tool. To increase safety, the fused tommy bar will bend before the vice can become over-stressed.

Part No	Jaw Width	Throat Depth (mm)	Opening (mm)	Net Weight (kg)	Qty per pallet
EWVQR7	7"/ 178mm	80	202	9.4	60
EWVQR9	9"/ 230mm	106	260	15.5	32
EWVQR10	10"/ 254mm	100	380	17.7	24

**Swivel Bases**

**FOR USE WITH ECLIPSE MECHANICS' VICES**

For use with Eclipse Mechanics' Vices. Includes three mount holes for attaching to a workbench. Rotates through 360° to lock the vice into the required working position.



Part No	Size	For use with
EMVSB-1	Swivel Base for 3"/ 75mm Vice	EMV-1
EMVSB-3	Swivel Base for 4"/ 100mm Vice	EMV-3
EMVSB-5	Swivel Base for 5"/ 125mm Vice	EMV-5
EMVSB-6	Swivel Base for 6"/ 150mm Vice	EMV-6
EMVSB-8	Swivel Base for 8"/ 200mm Vice	EMV-8

**Vice Spares**

Part No	Description
EMV-1JPS	Pair of Jaw Plates with Screws for EMV-1
EMV-3JPS	Pair of Jaw Plates with Screws for EMV-3
EMV-5JPS	Pair of Jaw Plates with Screws for EMV-5
EMV-6JPS	Pair of Jaw Plates with Screws for EMV-6
EMV-8JPS	Pair of Jaw Plates with Screws for EMV-8

**G-Clamps**



Average clamping force of 300 – 800kg (660 – 1760lbs). Guaranteed unbreakable malleable iron frame with a fast action twin start rolled acme thread. The steel swivel shoe applies an even pressure, even on angled surfaces, whilst the tommy bar will bend before the frame can become over-stressed.

Part No	Clamping Capacity	Frame Proof Loads	Pack Qty
E20-3	3" (75mm)	1000lbs / 455kg	6
E20-4	4" (100mm)	1200lbs / 545kg	6
E20-6	6" (150mm)	1400lbs / 636kg	6
E20-8	8" (200mm)	1700lbs / 773kg	2
E20-10	10" (250mm)	2000lbs / 909kg	2
E20-12	12" (300mm)	2500lbs / 1136kg	2

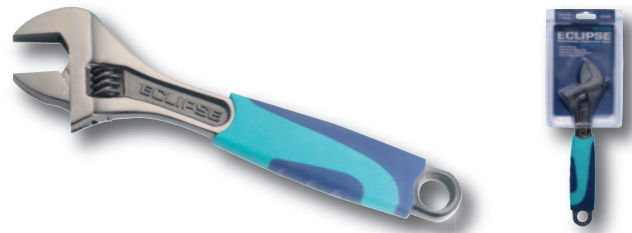
**Screw Clamps**



DIN5117 standard clamps with an average clamping force of 300kg (660lbs). The sliding head quickly sets the clamp to the required capacity, whilst the serrated grooves on the corrosion resistant nickel plated bar prevent slippage in use. The cast iron malleable heads offer maximum strength and the wooden handle provides a firm and comfortable grip.

Part No	Description / Clamping Capacity	Clamping Depth	Pack Qty
EC-SCR8	Screw Clamp - 8" / 200mm	120mm / 4¾"	10
EC-SCR12	Screw Clamp - 12" / 300mm	120mm / 4¾"	10
EC-SCR16	Screw Clamp - 16" / 400mm	120mm / 4¾"	10
EC-SCR24	Screw Clamp - 24" / 600mm	120mm / 4¾"	10
EC-SCR32	Screw Clamp - 32" / 800mm	120mm / 4¾"	6

**Adjustable Wrenches**



The extra wide jaw can be used to tighten large nuts and bolts, whilst the metric scale laser etched onto the jaw ensures fast setting of the tool. The rust resistant lacquer increases the product life and the ergonomic soft feel sleeve gives maximum comfort and grip.

Part No	Description	Pack Qty
ADJW6	6" Adjustable Wrench	5
ADJW8	8" Adjustable Wrench	5
ADJW10	10" Adjustable Wrench	5
ADJW12	12" Adjustable Wrench	5

**Leader Pattern Pipe Wrenches**



Packaging: individually swing tagged and polybagged

The frame and handle are made from a one piece ductile iron casting which is guaranteed unbreakable, whilst the flash hardened teeth increase wear resistance. The hardened and tempered steel adjustment nut gives a longer working life and the precision machined screw thread and spring jaw remains open until pressure is applied. Can also be used as a crude hammer. Conforms to British Standard BS3594.

Part No	Length (when open)	Pipe Capacity	Box Qty
ELPW8	8" (200mm)	1" (25mm)	4
ELPW10	10" (250mm)	1.1/2" (38mm)	4
ELPW12	12" (300mm)	2" (51mm)	4
ELPW14	14" (350mm)	2" (51mm)	4
ELPW18	18" (450mm)	2.1/2" (63mm)	4
ELPW24	24" (600mm)	3" (76mm)	1
ELPW36	36" (910mm)	5" (127mm)	1
ELPW48	48" (1200mm)	6" (152mm)	1

**Stillson Pattern Pipe Wrenches**



Packaging:  
• sizes 8" - 14" - blistercards  
• sizes 18" - 36" - swing tagged and polybagged

The hardened and tempered hook jaw eliminates breakage, whilst the flash hardened teeth increase wear resistance. The nut abutment means that all loading is transferred direct from the handle to the nut and jaw via the nut abutment, ensuring that the frame is not load bearing, thus reducing the possibility of frame failure. Conforms to British Standard BS3594.

Part No	Length (when open)	Pipe Capacity	Box Qty
ESPW8	8" (200mm)	3/4" (19mm)	6
ESPW10	10" (250mm)	1" (25mm)	6
ESPW12	12" (300mm)	1.1/4" (32mm)	6
ESPW14	14" (350mm)	1.1/2" (38mm)	6
ESPW18	18" (450mm)	2" (51mm)	4
ESPW24	24" (600mm)	2.1/2" (63mm)	1
ESPW36	36" (910mm)	3.1/2" (89mm)	1

**Sash Clamps**



Packaging: swing tagged and polybagged

Average clamping force of 500kg (1100lbs). The ductile head and slide are guaranteed unbreakable, whilst the steel bar offers maximum tensile and yield strength. The slightly tapered jaws enable perfectly parallel clamping and the fast action rolled thread applies pressure quickly and smoothly to the workpiece.

Part No	Maximum Clamping Capacity	Bar Length	Box Qty
ESC24	24" (600mm)	30" (760mm)	6
ESC30	30" (760mm)	36" (915mm)	6
ESC36	36" (915mm)	42" (1070mm)	6
ESC42	42" (1070mm)	48" (1220mm)	6
ESC48	48" (1220mm)	54" (1370mm)	6
ESC54	54" (1370mm)	60" (1525mm)	6
ESC66	66" (1680mm)	72" (1830mm)	6

**T-Bar Clamps**



Packaging: swing tagged and polybagged

Average clamping force of 1000kg (2200lbs). The drilled feet in the fixed head enable the clamp to be mounted to a workbench. The ductile head and slide are guaranteed unbreakable, whilst the steel bar offers maximum tensile and yield strength. The slightly tapered jaws enable perfectly parallel clamping and the fast action rolled thread applies pressure quickly and smoothly to the workpiece.

Part No	Maximum Clamping Capacity	Bar Length	Box Qty
ETBR42	42" (1070mm)	48" (1220mm)	4
ETBR48	48" (1220mm)	54" (1370mm)	4
ETBR54	54" (1370mm)	60" (1525mm)	4
ETBR66	66" (1680mm)	72" (1830mm)	4
ETBR78	78" (1980mm)	84" (2135mm)	4



**HAND TOOLS**  
**MACHINE TOOLS**  
**WOODWORKING TOOLS**



# PUNCHES



## CENTRE PUNCHES

- Used to indent, mark, scribe lines and to make indentations in workpieces prior to drilling
- Punch point accurately ground to an angle of 90°

Part No	Point Diameter	Length	Pack Size
351A	3.2mm (1/8")	100mm (4")	10
351B	4mm (5/16")	100mm (4")	10
351C	4.8mm (3/8")	100mm (4")	10
351D	6.35mm (1/4")	100mm (4")	10
351W	Wallet containing one of each		1 set
<b>Carded retail products</b>			
65-600R	3.2mm (1/8")	100mm (4")	5

## PARALLEL PIN PUNCHES

- Used to punch out pins and dowels

Part No	Point Diameter	Length	Pack Size
161AA	1.7mm (1/16")	100mm (4")	10
161A†	2.3mm (3/32")	100mm (4")	10
161B†	3.1mm (1/8")	100mm (4")	10
161CC	3.9mm (5/32")	100mm (4")	10
161C†	4.7mm (3/16")	100mm (4")	10
161DD	5.3mm (1/8")	100mm (4")	10
161D	6.1mm (1/4")	100mm (4")	10
161E	7.6mm (5/16")	150mm (6")	5
161FF	9.5mm (3/8")	150mm (6")	5
161W	Wallet containing one of each		1 set

† also available in bulk packs of 200 (161ABP, 161BBP, 161CBP)

## NAIL PUNCHES

- Designed to drive nail heads below the surface of wood
- Cupped and bevelled points limit skidding off nail head

Part No	Point Diameter	Length	Pack Size
352A	1.6mm (1/16")	100mm (4")	10
352B	2.4mm (3/32")	100mm (4")	10
352C	3.2mm (1/8")	100mm (4")	10
352D	4mm (5/16")	100mm (4")	10
352W	Wallet containing one of each		1 set

**Carded retail products**

65-232R	Nail punch	1.6mm (1/16")	100mm (4")	5
65-332R	Nail punch	2.4mm (3/32")	100mm (4")	5
65-432R	Nail punch	3.2mm (1/8")	100mm (4")	5
65-532R	Nail punch	4mm (5/16")	100mm (4")	5

## AUTO CENTRE PUNCHES

- Delivers a punch when hand pressure applied to knurled head
- One handed operation, hammer should not be used
- Depth of impression adjusted by turning knurled head

Part No	Length mm	Operating Pressure Range		Pack Size
		kg	lb	
65-171R	120mm (4 7/8")	13.5-2.25	30-5	10
E172	149mm (5 7/8")	22.5-6.3	50-14	1

## NAIL & PIN DRIVERS

Two quality drivers for pushing home nails and pins when using a hammer would be hazardous or cause damage. Magnetic head holds nail in place, and spring return allows automatic thrusting of nail below material surface. Pistol grip handle for extra secure grip.

- 2.5mm: for pushing home panel pins and nails up to 2.5mm diameter
- 4mm: for nails up to 4mm diameter

Part No	Head Type	Diameter	Pack Size
9180	Pin driver	2.5mm (1/8")	6
9185	Nail driver	4mm (5/16")	6

# SCRAPERS/PIN VICES/CHUCKS & COLLETS



Hand scrapers are designed for the removal of high spots on machined surfaces to give a smoother surface on slideways, bearings, cast iron surface plates and precision marking out plates. All scrapers have a soft feel handle and are made from high grade tool steel suitably hardened, to maintain a very keen cutting edge.

## ENGINEERS' SCRAPERS

- Suitable for toolroom and small engineering work

Part No	Blade Length	Cutting Edge	Pack Size
96A	100mm (4")	Three Square	5
97A	140mm (5½")	Three Square	5
99A	200mm (8")	Three Square	5
96B	100mm (4")	Flat	5
97B	150mm (6")	Flat	5
99B	200mm (8")	Flat	5
96C	100mm (4")	Curved half round	5
97C	150mm (6")	Curved half round	5
97D	200mm (8")	Curved half round	5
96	Set of 3 comprising Nos 96A, B, and C	1 set	
97	Set of 4 comprising Nos 97A, B, C and D	1 set	

## ERECTOR SCRAPERS

- Suitable for large jobs or heavy engineering
- Manufactured from chrome vanadium steel

Part No	Overall Length	Blade Length	Cutting Edge	Pack Size
5 256	335mm (13¼")	210mm (8¼")	Flat	5
6 257	350mm (14")	225mm (9")	Curved	5

## PIN CHUCK & REPLACEMENT COLLETS

- Used for gripping very small drills, mainly on automatic lathes, where pin chuck does not revolve

Part No	Overall Length mm/inches	Description	Pack Size
10 160	65mm (2½")	Chuck with 3 collets capacity from 0.25-2.5mm(0.01-0.1")	1
RP621HRD		Replacement Collet capacity from 0.25-0.75mm(0.01-0.03")	1
RP622MRD		Replacement Collet capacity from 0.75-1.5mm(0.03-0.06")	1
RP623FRD		Replacement Collet capacity from 1.5-2.5mm(0.06-0.10")	1

## PIN VICES

- Hand held tools designed for holding round materials
- Hollow handle enables material greater than the overall length of the pin chuck to be used

Part No	Capacity Type	mm	inches	Overall Length	Pack Size
121	Chuck	0-1.0	0-0.04	75mm (3")	10
122	Chuck	0.75-1.5	0.03-0.062	85mm (3½")	10
123	Chuck	1.4-3.1	0.055-0.122	95mm (3¾")	10
124	Chuck	3.1-5.00	0.122-0.196	105mm (4¼")	10
9 120	Set of 1 each (121, 122, 123 and 124)				1 set

## BEARING SCRAPERS

- Suitable for removing high spots from bearings

Part No	Overall Length	Blade Length	Pack Size
2584	180mm (7¼")	100mm (4")	5
2586	240mm (9½")	150mm (6")	5
7 2588	290mm (11½")	200mm (8")	5
258	Set of 3 comprising 258/4, 258/6 and 258/8		1 set

## NUTSPINNERS

### Nut Spinner - BA

Part No	Blade Length	Nut Size	Pack Size
7800	150mm (6")	0 BA	6
7801	150mm (6")	1 BA	6
7802	150mm (6")	2 BA	6
7803	150mm (6")	3 BA	6
7804	150mm (6")	4 BA	6
7806	150mm (6")	6 BA	6



For loosening and securing nuts particularly where spanners cannot reach or are awkward to use

- Trilobular handle with tapered neck for ergonomic fit
- Dual material handle for comfort in use
- Integral moulded finger grips around neck to allow increased torque

### Nut Spinner - Metric

Part No	Blade Length	Nut Size	Pack Size
7840	150mm (6")	4mm	6
7850	150mm (6")	5mm	6
7855	150mm (6")	5.5mm	6
7860	150mm (6")	6mm	6
7870	150mm (6")	7mm	6
7880	150mm (6")	8mm	6
7810	150mm (6")	10mm	6
7830*	7mm (½") AF, flexible shaft, with thicker handle for improved working grip. High strength flexible spring shaft. Ideal for use with hose clips.		6

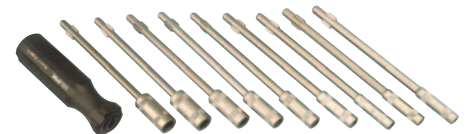


For loosening and securing nuts particularly where spanners cannot reach or are awkward to use

- Trilobular handle with tapered neck for ergonomic fit
- Dual material handle for comfort in use
- Integral moulded finger grips around neck to allow increased torque

### Nut Spinner Set - Metric

Part No	Blade Length	Nut Size	Pack Size
5490	9-piece metric nut spinner set with: handle, extension piece, 9 interchangeable blades-sizes: 4, 4.5, 5, 5.5, 6, 7, 8, 9 and 10mm in high quality tool roll.		1

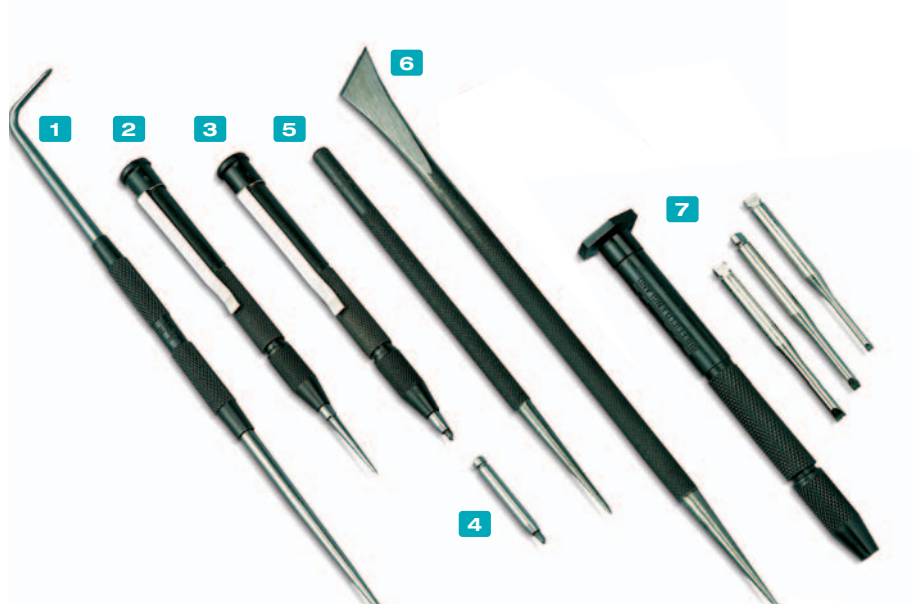


For loosening and securing nuts particularly where spanners cannot reach or are awkward to use

- Ergonomically designed handle
- Low slip textured finish for improved grip and torque



# SCRIBERS/JEWELLERS SCREWDRIVERS



## ENGINEERS' SCRIBERS

- Double ended for marking out in confined spaces, e.g. grooves

Part No	Overall Length	Description	Pack Size
<b>1</b> E222	190mm (7½")	Double Ended	10

## HANDY SCRIBER

- Double ended with pointed and knife-edge ends
- Suitable for marking and scoring most materials including wood, metal, laminates and plastics

Part No	Overall Length	Pack Size
<b>6</b> 76-229R	175mm (7")	5

## POCKET SCRIBERS

- Available with either hardened steel or tungsten carbide points
- Reversible point prevents tearing and snagging of clothing when clipped in a pocket

Part No	Size when closed	Description	Pack Size
<b>2</b> E220	89mm (3½")	With hardened steel point	10
<b>3</b> E225	89mm (3½")	With tungsten carbide point	10
<b>220/05</b>	-	Replacement hardened steel point	10
<b>225/02</b>	-	Replacement tungsten carbide point	10

## JEWELLERS' SCREWDRIVERS

- Designed to carry out fine, delicate work by toolmakers, jewellers, watch makers, instrument engineers and opticians
- Blade sizes match all commonly used slotted screws
- 110mm (4<sup>5</sup>/<sub>16</sub> in) overall length when fitted with blade

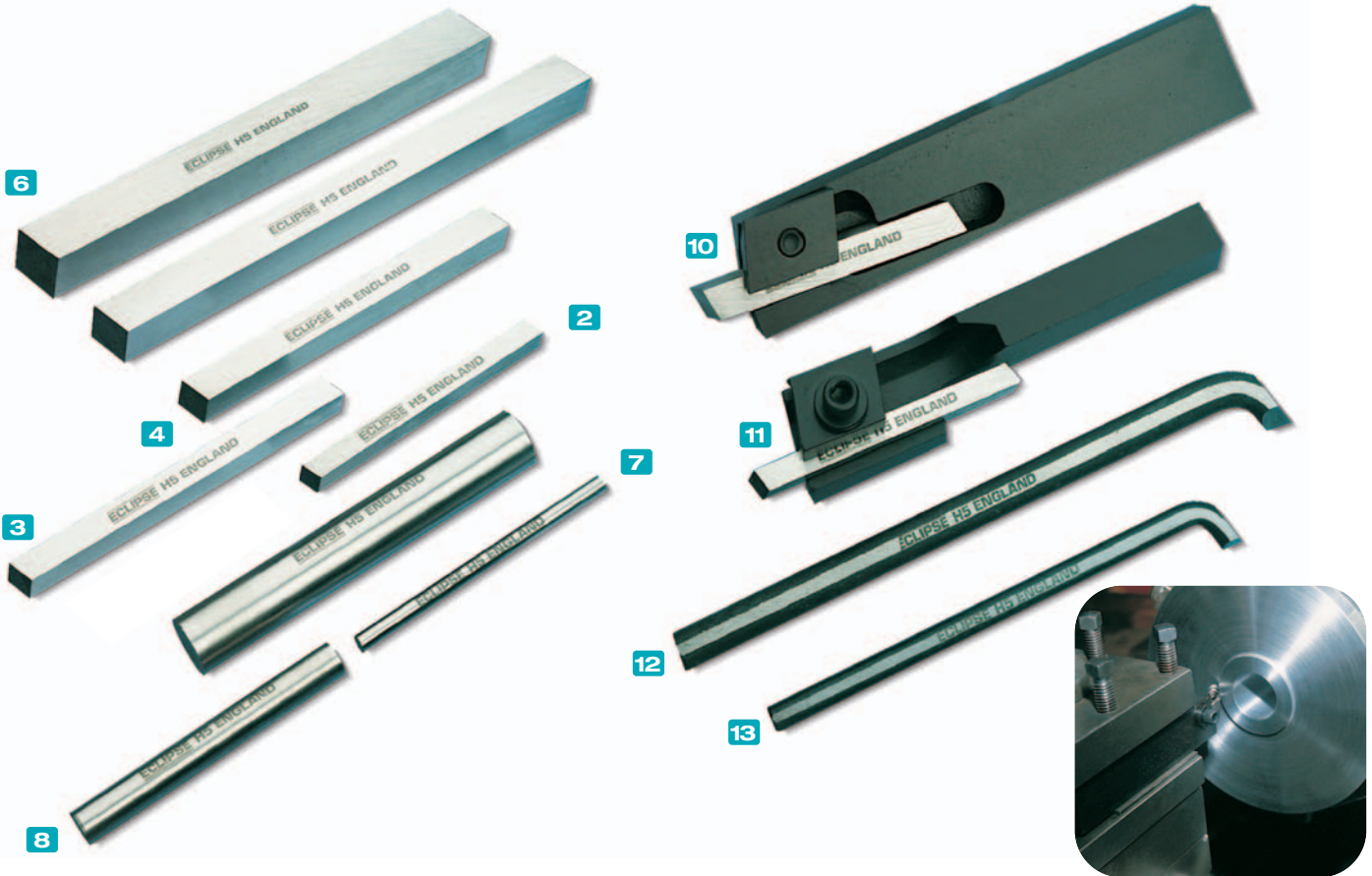
Part No	Blade Width	Pack Size
	mm                      in	
<b>777/1</b>	Set of six complete screwdrivers supplied in fitters case	1 set
<b>777/2</b>	Pocket set containing one screwdriver body and six interchangeable blades with widths from 0.6mm (0.025in) to 2.5mm (0.100in)	1 set

## MACHINISTS' SCRIBER

- Designed for the machinist
- For marking out in confined spaces, particularly on pre-machined workpieces

Part No	Overall Length	Description	Pack Size
<b>5</b> E227	114mm (4½")	One piece single ended scriber	10

# TOOL BITS/HOLDERS/BORING BARS



## TOOL BITS

- Eclipse H5 tool bits have a 5% cobalt content to give optimum hardness, grindability and cutting performance
- Square tool bits can be used in lathes and shaping machines
- Round tool bits used in internal boring bars and slotting machines
- Tool bits manufactured to ISO5421

H5 Square Part No.	H5 Round Part No.	Dimensions Section	Length	Pack Size
TD109R	TE70D	4.8mm (3/16")	51mm (2")	10
2 TD111M	7 TE74B	4.8mm (3/16")	76mm (3")	10
TD147R	TE111C	6.4mm (1/4")	76mm (3")	10
TD149M		6.4mm (1/4")	102mm (4")	10
TD151N	TE151D	7.9mm (5/16")	64mm (2 1/2")	10
3 TD189N	8 TE189J	9.5mm (3/8")	76mm (3")	10
TD191W		9.5mm (3/8")	102mm (4")	10
4 TD195C		9.5mm (3/8")	153mm (6")	10
TD271F	TE271E	12.7mm (1/2")	102mm (4")	5
TD275B		12.7mm (1/2")	153mm (6")	5
TD311E		15.9mm (5/8")	102mm (4")	5
TD315M		15.9mm (5/8")	153mm (6")	5
6 TD351R		19.0mm (3/4")	102mm (4")	5
TD355N		19.0mm (3/4")	153mm (6")	5

Diameters quoted are approximate, actual diameters being slightly more than the nominals quoted. We recommend that tool bits be ground under a copious flow of coolant to prevent build-up of heat.

## TOOL BIT HOLDERS

- Eclipse tool bit holders are designed to optimise toolbit performance
- Eclipse holders clamp the tool bit securely and rigidly
- Supplied complete with an Allen key and one Eclipse H5 tool bit

Part No.	Capacity		Shank Size		Overall Length	Pack Size
	mm	in	mm	in		
524SL	5-7	3/16 - 1/4	11.1 x 25.4	7/16 x 1	130mm (5 1/8")	1
10 534SL	8-10	5/16 - 3/8	15.9 x 31.8	7/8 x 1 1/4	155mm (6")	1
544SL	10-12.7	3/8 - 1/2	22.2 x 38	7/8 x 1 1/2	230mm (9")	1
523S	5-7	3/16 - 1/4	14.3 x 19	9/16 x 3/4	125mm (5")	1
533S	8-10	5/16 - 3/8	17.5 x 25.4	1 1/8 x 1	155mm (6")	1

Holders with the suffix 'SL' are designed for use in American type (slotted pillar) tool posts. Holders with suffix 'S' are of more robust construction and are designed for use on English type lathes with flat tool rests, or 4 way turret tool posts.

## BORING BARS

- Made from H5 cobalt high speed steel
- Shank ground on underside to provide a flat surface for ease of setting and to ensure rigidity when used in a tool post
- Ends ground ready for use

Part No	Diameter	Length	Pack Size
12 TK105B	5mm (3/16")	114mm (4 1/2")	10
TK146C	6.5mm (1/4")	127mm (5")	10
TK188P	8mm (5/16")	153mm (6")	10
13 TK230J	9.5mm (3/8")	178mm (7")	10

### STATEMENT OF CONFORMITY

Tool Bits - in general compliance with British Standard BS 1296 : 4 - Specification for single point cutting tools, ground high speed tool bits.

# CUTTING OFF/LATHE TOOLS/HOLDERS



## CUTTING OFF TOOLS

- Bevel section accurately ground with clearance angle at cutting edge

	H5 Square	Width	Top Thickness	Bottom Thickness	Length	Pack Size
1	TH325M	12.70mm (1/2")	2.4mm (3/32")	1.6mm (1/16")	114mm (4 1/2")	10
2	TH466F	15.87mm (5/8")	2.4mm (3/32")	1.6mm (1/16")	127mm (5")	10
3	TH628V	19.05mm (3/4")	3.2mm (1/8")	1.6mm (1/16")	153mm (6")	10
4	TH750R	22.23mm (7/8")	3.2mm (1/8")	1.6mm (1/16")	178mm (7")	10
5	TH912T	25.40mm (1")	4.8mm (3/16")	3.2mm (1/8")	203mm (8")	5

	Part No	Capacity	Thickness	Length	Pack Size
1	TJ123V	7.93mm (5/16")	1.6mm (1/16")	89mm (3 1/2")	10
2	TJ425P	12.70mm (1/2")	1.6mm (1/16")	114mm (4 1/2")	10
3	TJ445T	12.70mm (1/2")	2.4mm (3/32")	114mm (4 1/2")	10
4	TJ465G	12.70mm (1/2")	3.2mm (1/8")	114mm (4 1/2")	10
5	TJ726K	17.46mm (11/16")	2.4mm (3/32")	127mm (5")	5
6	TJ746C	17.46mm (11/16")	3.2mm (1/8")	127mm (5")	5
7	TJ766J	17.46mm (11/16")	4.0mm (5/16")	127mm (5")	5

## CUTTING OFF TOOL HOLDERS

- 633S designed specifically for use on small lathes. The only toolholder in our range suitable for hollow ground cutting off tools
- All holders include a clamp designed to ensure that the tools are held securely and rigidly

	Part No.	Capacity mm	Capacity in	Shank Size mm	Shank Size in	Overall Length	Pack Size
1	633S	8	5/16	8 x 14.2	5/16 x 9/16	2.4mm (3/32")	95mm (3 7/8")
2	653S	12.7-16	1/2 - 5/8	12.7 x 25.4	1/2 x 1	3.2mm (1/8")	155mm (6")
3	673S	19-22.2	3/4 - 7/8	16 x 35	5/8 x 1 1/8	4.75mm (3/16")	180mm (7")
4	693S	25.4-28.5	1 - 1 1/8	19 x 43	3/4 x 1 7/8	5.5mm (1/4")	190mm (7 1/2")

### Additional information

	Part No	Part No. of Suitable Cutting-Off Tool	Pack Size
1	633S	TJ123V	1
2	653S	TH325M or TH466F	1
3	673S	TH628V or TH750R	1
4	693S	TH912T	1

## LATHE TOOL SETS

- Each set contains six H5 tools in a plastic rack
- Ends are ground ready for use and bases are ground to ensure correct seating and rigidity
- Individual tools in each set are available separately

	Part No	Nominal Thickness	Length	Pack Size	
1	E420	6.5mm (1/4")	90mm (3 1/2")	1 set	
2	E430	9.5mm (3/8")	125mm (5")	1 set	
<b>E 420 Series</b>		<b>Unit of Pack</b>	<b>E 430 Series</b>	<b>Pack Size</b>	
3	E421	Roughing	E431	Roughing	5
4	E422	Finishing	E432	Finishing	5
5	E423	Parting-Off	E433	Parting-Off	5
6	E424	External Threading	E434	External Threading	5
7	E425	Boring	E435	Boring	5
8	E426	Internal Threading	E436	Internal Threading	5



# TAP WRENCHES & ACCESSORIES



## TRAMMEL HEADS

- Supplied as one pair of heads
- Suitable for laying out the distance between two points and scribing arcs and circles
- To be used in conjunction with any wood offcut between 3/4" to 1 1/2" wide, minimum thickness of 3/8"

Part No	Suitable for beam sizes	Pack Size
<b>1</b> 33	19 x 38mm (3/4" - 1 1/2") Thick, & 38mm (3/4") Wide	pair

## CHUCK TYPE TAP WRENCH

- Stepped jaws greatly extend range of taps for each wrench
- Adjustable tommy bar for tapping close to a shoulder or other obstructions
- Available in normal and long reach designs

Part No	Suitable for beam sizes		Pack Size
<b>6</b> E141	50mm (1 7/8")	57mm (2 1/4")	1
<b>7</b> E142	65mm (2 5/8")	90mm (3 1/2")	1
<b>7</b> E143	90mm (3 5/8")	127mm (5")	1
<b>8</b> E145	165mm (6 1/2")	90mm (3 1/2")	1
<b>8</b> E146	245mm (10")	127mm (5")	1

## STANDARD BAR TYPE TAP WRENCH

- Provides a comfortable and positive grip plus the sensitivity required when tapping a blind hole
- Knurled locknut ensures a constant grip on the tap when in use

Part No.	Capacity mm	Square A/F ISO	BA	BSW BSF	UNC	UNF	Length mm	in	Unit of Pack
<b>3</b> E240	1.5-4.6	M1-M6	14-0	3/8-3/4	0-12	1/4	110/105	4 3/4	1
<b>4</b> E241	2.0-7.2	M3-M12	5-0	1/2-3/4	4-12	1/2-3/4	164/156	6 1/2	1
<b>5</b> E242	2.5-9.0	M4-M16	3-0	5/8-3/4	8-12	3/4-3/4	230/220	9	1

Part No.	Jaw Capacities	Square A/F mm	ISO	BA	BSW BSF	UNC	UNF
<b>6</b> E141	Min Max	1 2.8	M1 M3.5	14 4	- 1/8	1 6	- -
<b>7</b> E142 & <b>8</b> E145	Min Max	2.0 5.0	M1 M6	14 0	1/8 1/4	6 12	- 1/4
<b>7</b> E143 & <b>8</b> E146	Min Max	3.0 8.0	M4 M12	3 0	3/8 1/2	8 12	1/4 1/2

## TOOLMAKERS CLAMP

- Manufactured from case-hardened steel, designed to ensure jaws remain in place

Part No	Jaw Capacity	Length of Jaw	Jaw Section	Pack Size
<b>9</b> 410	25mm (1")	50mm (2")	8.0mm (5/16 sq in)	1
<b>9</b> 411	38mm (1 1/2")	75mm (3")	11.1mm (7/16 sq in)	1
<b>10</b> 412	63mm (2 1/2")	100mm (4")	14.3mm (9/16 sq in)	1
<b>10</b> 413	89mm (3 1/2")	125mm (5")	17.5mm (11/16 sq in)	1



**THREADED INSERT  
SETTING TOOLS  
SPARES  
KITS  
RIVETS**

# ECLIPSE SPIRALUX RIVETERS

## Heavy Duty Long Nose - 2720

Part No	Description	For use with Rivet Sizes	Pack Size
2720	Heavy Duty Long Nose	3mm (1/8") 4mm (5/16") 5mm (3/8")	1



A versatile variation of the 2730, with extra long nose to facilitate access in recessed situations such as corrugated sheet. Supplied with 4 interchangeable noses.

## Heavy Duty - 2730

Part No	Description	For use with Rivet Sizes	Pack Size
2730	Heavy Duty	3mm (1/8") 4mm (5/16") 5mm (3/8")	1



The market leading professional heavy duty riveter, best suited to engineering and maintenance projects. Supplied with 3 interchangeable noses.

## Easy Grip - 2770

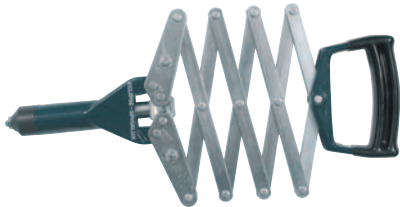
Part No	Description	For use with Rivet Sizes	Pack Size
2770	Easy Grip	3mm (1/8") 4mm (5/16") 5mm (3/8")	1



Easy one-handed operation. Well suited to light engineering use, especially for the home and workshop, providing a professional finish.

## Lazy Tong - 2750

Part No	Description	For use with Rivet Sizes	Pack Size
2750	Lazy Tong	3mm (1/8") 4mm (5/16") 5mm (3/8")	1



This powerful and versatile tool has the advantage of being operated with one hand, providing no loss in efficiency. Useful on vehicle maintenance, agricultural projects and construction.

## Long Arm - 2760

Part No	Description	For use with Rivet Sizes	Pack Size
2760	Long Arm	4mm (5/16") 5mm (3/8") 6mm (1/2")	1



The long arms reduce to the minimum the effort required to set rivets up to 6mm. Probably the most powerful industrial hand riveter available today. Ideal for boat building and coachwork, agricultural machine maintenance, etc. Supplied with 4 interchangeable noses.

## Multi-Head - 2780

Part No	Description	For use with Rivet Sizes	Pack Size
2780	Multi-Head	2mm (1/16") 3mm (1/8") 4mm (5/16") 5mm (3/8")	1



Rotating nose for easy rivet size selection, versatile quick change system, and dual position head (vertical and horizontal).

## General Purpose Riveter - 2800

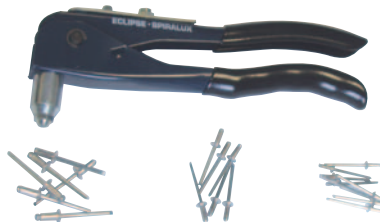
Part No	Description	For use with Rivet Sizes	Pack Size
2800	General Purpose	2mm (1/16") 3mm (1/8") 4mm (5/16") 5mm (3/8")	1



General purpose riveter, equipped with 4 interchangeable noses, also features automatic ejection of mandrel, slip guarded comfort handles and an internally stored spanner for changing nose bushes.

## Easy Grip Kit - 2772

Part No	Description
2772	The 2770 riveter is supplied with a selection of 3mm, 4mm and 5mm aluminium rivets. Packed in attractive hanging box, offering good product visibility.



## Heavy Duty Kit - 2735

Part No	Description
2735	A carefully conceived engineering riveter kit, comprising robust hinged plastic box and 200 assorted 3, 4 and 5mm aluminium rivets and 2730 heavy duty riveter.





# THREADED INSERT SETTING TOOLS & KITS



## THREADED INSERT SETTING TOOL

Part No Description

- 1 2743** This thin sheet setting tool has been designed to enable threaded nut inserts to be set easily by hand. Invaluable to maintenance engineers for on-the-spot repairs. Supplied in storage wallet complete with 4mm, 5mm, 6mm and 8mm nose bushes and mandrels.

## THREADED INSERT NOSE BUSH/ MANDREL CONVERSION KIT

Part No.	Size	Quantity	Part No.	Size	Quantity
72CK211	6 UNC	10	72CK224L	1/4 UNF	10
72CK212	8 UNC	10	71CK231	3mm	10
72CK213L	10 UNC	10	72CK232L	4mm	10
72CK214L	1/4 UNC	10	72CK233L	5mm	10
			72CK234	6mm	10
			72CK235	8mm	10

## INSERTS

Part No.	Size	Quantity	Part No.	Size	Quantity
724504	4mm	100	724505	5mm	100
724506	6mm	100	724508	8mm	100

## THREADED INSERT SETTING TOOL KIT

Part No Description

- 2 2745** As the 2743 but supplied with additional 4mm, 5mm, 6mm and 8mm threaded nutserts. Housed in a compact tool box for easy storage.

- Designed for the quick, manual insertion of permanent load bearing threads in materials from 0.20" to 0.128"
- Simple set up and easy uniform stroke allows a nutsert to be set in thin sheet materials without causing surface damage
- A comprehensive range of conversion kits and inserts are available

### Product Benefits

- One side application
- Flush mounting
- Permanent thread
- Moisture resistant
- Cost effective
- Strong
- Rapid
- Vibration resistant
- Portable

## TSN® GRIP RANGE

SIZE	MINIMUM	MAXIMUM
4mm	0.51mm (0.020")	1.27mm (0.050")
5mm	0.51mm (0.020")	1.27mm (0.050")
6mm	0.76mm (0.030")	1.68mm (0.066")
8mm	0.91mm (0.036")	3.25mm (0.128")

All TSN® are BS, ISO metric screw threads in the coarse pitch series. TSN® (thin sheet nutsert) is the registered trademark of AVDEL LTD.

# RIVETER KITS/SPARES/RIVETS/DEBURRING TOOLS

## RIVETS

Size	Aluminium Boxes of 100	Steel Boxes of 100
3mm Short	A23S	S23S
3mm Medium	A23M	S23M
3mm Long	A23L	S23L
4mm Short	A24S	S24S
4mm Medium	A24M	S24M
4mm Long	A24L	S24L
5mm Short	A25S	S25S
5mm Medium	A25M	S25M
5mm Long	A25L	S25L

## WASHERS

Part No	Description	Unit of Pack
<b>S23W</b>	Washers Blister 100 x 3mm (1/8")	10
<b>S24W</b>	Washers Blister 100 x 4mm (5/16")	10
<b>S25W</b>	Washers Blister 100 x 5mm (3/16")	10

HOW TO SELECT THE CORRECT RIVET

### MAXIMUM GRIP CHART

RIVET DIAMETER	MAX.RECOMMENDED MATERIAL THICKNESS		
	SHORT	MEDIUM	LONG
3mm	2mm	3.5mm	7.5mm
4mm	2mm	5mm	9mm
5mm	3mm	7mm	11mm

## SPARE NOSE KITS

Part No	Description	For use with rivet sizes
<b>02738A</b>	Kit 1-5x72HD12A	3mm(1/8")
<b>02738B</b>	Kit 2-5x72HD13A	4mm(5/16")
<b>02738C</b>	Kit 3-5x72HD14	5mm(3/16")
<b>for use with 2760</b>		
<b>02768A</b>	Kit 4-1 each 72LA12 72LA13A (for aluminium) 72LA13S (for steel) 72LA14	4mm(5/16") 5mm(3/16") 5mm(3/16") 6mm (1/4")



## DEBURRING TOOL

Part No	Description
<b>1 9350</b>	A multifunctional tool capable of holding a range of different blades, coarse to fine, for external and internal deburring operations. Easy to operate chuck allows for quick blade changeover.



## DEBURRING TOOL BLADES

Part No	Description
<b>2 DB1</b>	Heavy Duty HSS blade for steel and aluminium
<b>3 DB2</b>	Heavy Duty HSS blade for brass and cast iron. Capable of right and left hand cuts
<b>4 DB3</b>	Heavy Duty HSS blade for removing external and internal burrs simultaneously from holes drilled into tubing and thin sheets
<b>5 DB4</b>	Extra fine point HSS blade used for steel and aluminium

All blades are ground from quality high speed steel, heat treated for maximum tool life and designed for safety with unique rounded heads

## SPARE JAW KITS

Part No	Description
<b>2738</b>	Pack of 5 jaws to suit models: 2720, 2730, 2750, 2770 <b>Part No. 72HD5A</b>
<b>02768</b>	Pack of 5 jaws to suit models: 2760 <b>Part No. 72LA5</b>

Spares list and drawings are also available for threaded insert setting tool 2743/2745.

## RIVETER REPAIR KITS

Part No	Description	Part No	Description
<b>02729</b>	Repair kit for 2720	<b>02759</b>	Repair kit for 2750
<b>02739</b>	Repair kit for 2730/2770	<b>02769</b>	Repair kit for 2760

**COLD CHISELS  
WOOD CHISELS  
ELLIOTT LUCAS PLIERS  
SDS PLUS HAMMER DRILL BITS**





# COLD CHISELS - CHROME VANADIUM

## FLAT CHISELS, SPECIALIST & GUARDED CHISELS

### Flat Chisels

Part No	Product Description	Length	Blade Width	Octagon Dia.	Pack Size
CB24A	Flat	100mm (4")	6.35mm (¼")	6.35mm (¼")	10
CB28G	Flat	150mm (6")	6.35mm (¼")	6.35mm (¼")	10
CB46T	Flat	125mm (5")	9.5mm (¾")	9.5mm (¾")	10
CB48E	Flat	150mm (6")	9.5mm (¾")	9.5mm (¾")	10
CB68V	Flat	150mm (6")	12.7mm (½")	12.7mm (½")	10
CB70H	Flat	205mm (8")	12.7mm (½")	12.7mm (½")	10
CB72F	Flat	250mm (10")	12.7mm (½")	12.7mm (½")	10
CB73N	Flat	300mm (12")	12.7mm (½")	12.7mm (½")	10
CB88R	Flat	150mm (6")	15.9mm (¾")	12.7mm (½")	10
CB89H	Flat	180mm (7")	15.9mm (¾")	12.7mm (½")	10
CB90M	Flat	205mm (8")	15.9mm (¾")	12.7mm (½")	10
CB92N	Flat	250mm (10")	15.9mm (¾")	12.7mm (½")	10
CB108D	Flat	150mm (6")	19mm (¾")	15.9mm (¾")	10
CB110T	Flat	205mm (8")	19mm (¾")	15.9mm (¾")	10
CB111G	Flat	230mm (9")	19mm (¾")	15.9mm (¾")	10
CB112E	Flat	250mm (10")	19mm (¾")	15.9mm (¾")	10
CB113V	Flat	300mm (12")	19mm (¾")	15.9mm (¾")	10
CB116M	Flat	450mm (18")	19mm (¾")	15.9mm (¾")	5
CB150E	Flat	205mm (8")	25.4mm (1")	22.2mm (¾")	5
CB151V	Flat	230mm (9")	25.4mm (1")	22.2mm (¾")	5
CB152R	Flat	250mm (10")	25.4mm (1")	22.2mm (¾")	5
CB153H	Flat	300mm (12")	25.4mm (1")	22.2mm (¾")	5
CB156N	Flat	450mm(18")	25.4mm(1")	22.2mm (¾")	5



For general cutting and chipping of metals, and for shaping, facing and cutting of stonework

### Specialist Chisels

Part No	Product Description	Length	Blade Width	Octagon Dia.	Pack Size
1 CB770K	Flooring	230mm (9")	56mm (2¼")	17.5mm (⅝")	5
CB730K	Bolster	230mm (9")	75mm (3")	19mm (¾")	5
2 CB740K	Bolster	230mm (9")	100mm (4")	25mm (1")	5
100V	Bolster with rubber grip	230mm (9")	100mm (4")	25mm (1")	5
CB534A	Crosscut	150mm (6")	6.35mm (¼")	12.7mm (½")	10
CB556T	Crosscut	200mm (8")	9.5mm (¾")	19mm (¾")	10
3 CB827V	Plugging	250mm (10")	6.35mm (¼")	15.9mm (¾")	5
4 CB292R	Concrete Pt	250mm (10")	4mm (⅜")	15.9mm (¾")	10
CB313P	Concrete Pt	300mm (12")	4.8mm (⅜")	19mm (¾")	10
CB353G	Concrete Pt	300mm (12")	6.35mm (¼")	25mm (1")	5
5 SJ-MCT	Mason's Pitching Tool				5



## WOOD CHISELS



- Heat treated blades for maximised safety and strength
- Soft feel ergonomic handle
- Chrome vanadium steel
- Built in striking cap



Part No	Description	Barcode	Box Qty
BEWC3/8E	3/8" (9mm) Bevel Edge	5013035041851	6
BEWC1/4E	1/4" (6mm) Bevel Edge	5013035041868	6
BEWC5/8E	5/8" (15mm) Bevel Edge	5013035041875	6
BEWC3/4E	3/4" (19mm) Bevel Edge	5013035041882	6
BEWC1/2E	1/2" (12mm) Bevel Edge	5013035041899	6
BEWC1E	1" (25mm) Bevel Edge	5013035041905	6
BEWC11/4E	1.1/4" (32mm) Bevel Edge	5013035041912	6
BEWC11/2E	1.1/2" (38mm) Bevel Edge	5013035041929	6
BEWC2E	2" (50mm) Bevel Edge	5013035041936	6
BEWC3BCE	3pc Set: 1/2", 3/4", 1" - blister packed	5013035042155	6
BEWC4BCE	4pc Set: 1/4", 1/2", 3/4", 1" - blister packed	5013035042162	6
BEWC6BCE	6pc Set: 1/4", 3/8", 1/2", 3/4", 1", 1.1/4" - blister packed	5013035042186	6
BEWC3PSE	3pc Set: 1/2", 3/4", 1" - wallet	5013035041943	6
BEWC6PSE	6pc Set: 1/4", 3/8", 1/2", 3/4", 1", 1.1/4" - boxed	5013035041950	6



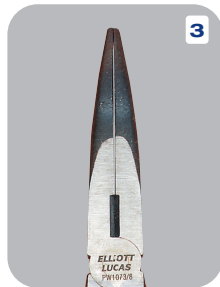
#### STATEMENT OF CONFORMITY

Cold Chisels - in general compliance with British Standard BS 3066 : 1995 - Specification for engineers' cold chisels and allied tools.

# ELLIOTT LUCAS

## MAXIGRIP PLIERS

MAXIGRIP pliers have ergonomic, soft feel sleeves. All cutting edges induction hardened for strength and durability.



Part No.	Product Description	Size	Handle Type	Cable Capacity Max	Test Wire Capacity to BS 3087 where applicable	Pack Size
PW21696/08	Engineers' Plier	160mm (6")	MAXIGRIP	10 sq mm	Med 1.6mm	5
PW21697/08	Engineers' Plier	180mm (7")	MAXIGRIP	16 sq mm	Med 1.6mm	5
PW21698/08	Engineers' Plier	200mm (8")	MAXIGRIP	16 sq mm	Med 1.6mm	5
<b>1</b> PW216910/08	Engineers' Plier	250mm (10")	MAXIGRIP	25 sq mm	Med 1.6mm	5
PW5835/08	Long Nose Plier	140mm (5½")	MAXIGRIP	6 sq mm	Med 1.6mm	5
PW5836/08	Long Nose Plier	160mm (6")	MAXIGRIP	10 sq mm	Med 1.6mm	5
<b>2</b> PW10638/08	Long Nose Plier	200mm (8")	MAXIGRIP	10 sq mm	Med 1.6mm	5
<b>3</b> PW10738/08	Bent Long Nose Plier	200mm (8")	MAXIGRIP	10 sq mm	Med 1.6mm	5
PA15436/08	Snipe Nose Plier	160mm (6")	MAXIGRIP	N/A	N/A	5
<b>4</b> PA15438/08	Snipe Nose Plier	200mm (8")	MAXIGRIP	N/A	N/A	5
<b>5</b> PA16136/08	Flat Nose Plier	160mm (6")	MAXIGRIP	N/A	N/A	5
<b>6</b> PA14736/08	Round Nose Plier	160mm (6")	MAXIGRIP	N/A	N/A	5

Wire tensile strength:  
Medium Hard 1600 MPa / Hard 2200 MPa



Part No.	Product Description	Size	Handle Type	Cable Capacity Max	Test Wire Capacity to BS 3087 where applicable	Pack Size
PW7735/08	Diagonal Cutting Nipper	125mm (5")	MAXIGRIP	6 sq mm	Med 1.6mm	5
PW7736/08	Diagonal Cutting Nipper	160mm (6")	MAXIGRIP	10 sq mm	Med 1.6mm	5
<b>7</b> PW7737/08	Diagonal Cutting Nipper	180mm (7")	MAXIGRIP	10 sq mm	Med 1.6mm	5
<b>8</b> PW14537/08	Hi. Lever. Diag. Cutting Nipper	180mm (7")	MAXIGRIP	10 sq mm	Hard 1.8mm	5
<b>9</b> PW9637/08	End Cutting Nipper	165mm (6½")	MAXIGRIP	16 sq mm	Hard 1.6mm	5
<b>10</b> PA19536/08	End Wire Stripper	160mm (6")	MAXIGRIP	6 sq mm	N/A	5
<b>11</b> PA1978/08	Cable Croppers	200mm (8")	MAXIGRIP	12 sq mm	N/A	5
<b>12</b> PW7738/08	Heavy Duty Diag. Cutting Nipper	200mm (8")	MAXIGRIP	12 sq mm	Hard 1.8mm	5

Wire tensile strength:  
Medium Hard 1600 MPa / Hard 2200 MPa

## ELLIOTT LUCAS SPECIAL PURPOSE PLIERS

### Carpenters' Pincers

For gripping and extracting nails and tacks.

Bevelled jaw edges for gripping nails without cutting them.

Curved jaw to enable rocking of tool to lever nails and tacks.



Part No.	Product Description	Size	Handle Type	Pack Size
<b>1</b> PB806/08	Carpenters' Pincer	160mm (6")	P.V.C. Dip	5
<b>2</b> PB807/08	Carpenters' Pincer	180mm (7")	P.V.C. Dip	5
<b>3</b> PB808/08	Carpenters' Pincer	200mm (8")	P.V.C. Dip	5

### Cable Croppers

Specially designed cutting edges ensure ends of cable do not fray.

For soft cables only. (Not to be used on cable with a hard core/outer eg. steel)



Part No.	Product Description	Size	Handle Type	Cable Capacity Max	Test Wire Capacity to BS 3087 where applicable	Pack Size
<b>2</b> PA196810/08	Cable Croppers	250mm (10")	P.V.C. Dip	16mm	25 sq mm	5



### Revolving Punch Pliers

One tool capable of punching several hole sizes.

Hardened punch edges for longer life.

Wear pad ensures material being cut is not damaged.

Punch sizes: 5/64, 3/32, 7/64, 1/8, 5/32, 3/16 inch.

Part No.	Product Description	Size	Handle Type	Pack Size
<b>3</b> PA2238/08	Revolving Punch Plier	200mm (8")	P.V.C. Dip	5

### Waterpump Pliers

Adjustable pliers for gripping pipes, nuts and bolts.

Sliding pivot gives a wide range of jaw openings.

Joint protector ensures handles cannot close together and trap fingers.

Offset jaws to provide more accurate gripping when jaw grip is applied.

3 types of joint available - slip, groove and box joint.



Part No.	Product Description	Size	Handle Type	Pack Size
<b>4</b> PA4069/08	Slip Joint Waterpump	250mm (10")	P.V.C. Dip	5
<b>5</b> PA45410/08	Groove Joint Waterpump	250mm (10")	P.V.C. Dip	5
<b>6</b> PA55510/08	Box Joint Waterpump	250mm (10")	P.V.C. Dip	5



## ELLIOTT LUCAS SPECIAL PURPOSE PLIERS



Part No.	Product Description	Size	Handle Type	Cable Capacity Max	Test Wire Capacity to BS 3087 where applicable	Pack Size
<b>PW2166/08</b>	Engineers' Plier	160mm (6")	Unsleeved	10 sq mm	Med 1.6mm	5
<b>PW2167/08</b>	Engineers' Plier	180mm (7")	Unsleeved	16 sq mm	Med 1.6mm	5
<b>PW2168/08</b>	Engineers' Plier	200mm (8")	Unsleeved	16 sq mm	Med 1.6mm	5
<b>1 PW21610/08</b>	Engineers' Plier	250mm (10")	Unsleeved	25 sq mm	Med 1.6mm	5

For use in environments where bare metal handles are appropriate. The handles are impervious to swarf, glass chippings and heat melting.

### Engineers' Pliers

Multipurpose pliers for cutting, gripping and twisting.

- Induction hardened cutting edges for cutting medium hard wire.
- Pipe grip for gripping pipes, rods and other components.
- Serrated jaw for gripping nuts, bolts, studs and similar objects.
- Joint cutter for cleanly cropping soft wire.



Part No.	Product Description	Size	Handle Type	Pack Size
<b>2 PA10148/08</b>	Glass Plier	200mm (8")	Painted	5

### Glass Pliers

For holding and shaping glass.

- Painted handles stop splinters of glass from embedding in handles.
- Jaws do not meet immediately in front of pivot to ensure glass can be gripped up to cut line.
- Used to snap off a narrow strip of scored glass or nibble back to a line or around a curve.



Part No.	Product Description	Size	Handle Type	Pack Size
<b>3 PA788/08</b>	Gas Plier	200mm (8")	Unsleeved	5

### Gas Pliers

Designed to grip pipework of different sizes.

- Multipurpose tool which includes a joint cutter.
- Two curved serrated sections to grip pipes of varying sizes.
- 'V' notch in front of each jaw to grip wire.
- Wire cropper located near pivot.
- Handles shaped to form a pipe reamer and turn screw respectively.



Part No.	Product Description	Size	Handle Type	Model Type	Stripping Capacity	Pack Size
<b>4 PA18518/08</b>	Wire Stripper Crimper	200mm (8")	Sleeved	Standard	0.13-6.0 sq mm	5
<b>5 PA18518HD/08</b>	HD Wire Stripper Crimper	200mm (8")	Sleeved	Heavy Duty	0.13-8.0 sq mm	5

### Wire Stripper Crimpers

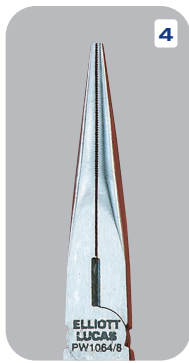
Designed to cut the cable sheath and crimp the wire.

- Alloy steel jaws capable of stripping all types of wire.
- Unique, fully automatic design makes wire stripping easy.
- Multipurpose tool combining stripping, crimping and cutting.

**ELLIOTT LUCAS**  
**VDE INSULATED SAFETY PLIERS**

Designed, manufactured and individually tested for use around live working circuits up to 1000 volts.

**1**



- Drop forged from high grade special tool steel
- Individually induction hardened
- Corrosion protected lacquered surface
- Slip guard safety handles
- For use around live circuits not exceeding 1000 volts A.C. or 1500 volts D.C.

**ELLIOTT LUCAS** insulated pliers are 100% tested in accordance with IEC 900/DIN EN 60900/VDE 0682 PART 201 and meet the high safety requirements of these standards. All pliers are individually tested in a waterbath to withstand 10,000 volts A.C. Additional tests are performed on the ergonomic safety handles between temperatures of -20°C and +70°C to ensure resistance to cracking and stripping. Flame retardancy properties are tested in an open gas flame. This specialised range of **ELLIOTT LUCAS** pliers can therefore be guaranteed to provide the user with complete peace of mind.

Part No.	Product Description	Size	Handle Type	Cable Capacity Max	Test Wire Capacity to BS 3087 where applicable	Pack Size
PWSF21647/08	Engineers' Plier	180mm (7")	V.D.E.	16 sq mm	Med 1.6mm	5
<b>1</b> PWSF21648/08	Engineers' Plier	200mm (8")	V.D.E.	16 sq mm	Med 1.8mm	5
<b>2</b> PWSF7746/08	Diagonal Cutting Nipper	165mm (6½")	V.D.E.	10 sq mm	Med 1.6mm	5
PWSF5846/08	Long Nose Plier	165mm (6½")	V.D.E.	10 sq mm	Med 1.6mm	5
<b>4</b> PWSF10648/08	Long Nose Plier	200mm (8")	V.D.E.	10 sq mm	Med 1.8mm	5
<b>5</b> PWSF10748/08	Bent Long Nose Plier	200mm (8")	V.D.E.	10 sq mm	Med 1.6mm	5
<b>6</b> PWSF19546/08	End Wire Stripper Plier	160mm (6")	V.D.E.	6 sq mm	N/A	5
<b>7</b> PWSF19786/08	Cable Shear	165mm (6½")	V.D.E.	12 sq mm	N/A	5
PWSF19788/08	Cable Shear	200mm (8")	V.D.E.	16 sq mm	N/A	5
PWSF8856/08	Heavy Duty Side Cutter	165mm (6½")	V.D.E.	10 sq mm	Med 1.8mm	5
<b>8</b> PWSF8858/08	Heavy Duty Side Cutter	200mm (8")	V.D.E.	12 sq mm	Med 1.8mm	5
PASF66610/08	Water Pump Plier	250mm (10")	V.D.E.	12 sq mm	Med 1.8mm	5

Wire tensile strength:  
Medium Hard 1600 MPa / Hard 2200 MPa

**WARNING**

Do not use on live circuits. Electrical installations should be disconnected from their mains supply before work is carried out. Do not touch non-insulated areas of tool when in use.

**PRODUCT CARE**

Always visually inspect pliers before use. If the insulation is damaged or marked in any way, the pliers should not be used near live electrical circuits. To ensure satisfaction from this product, it should be kept clean and carefully stored in a contaminant free, dry environment when not in use.

## SDS PLUS HAMMER DRILL BITS

### Fast, efficient and accurate

Flute geometry design ensures maximum amount of spoil removal.

Multi-carbide tip increases penetration rate, cutting accuracy, and life.



Optimum core width and flute geometry provides the perfect balance between speed and strength.

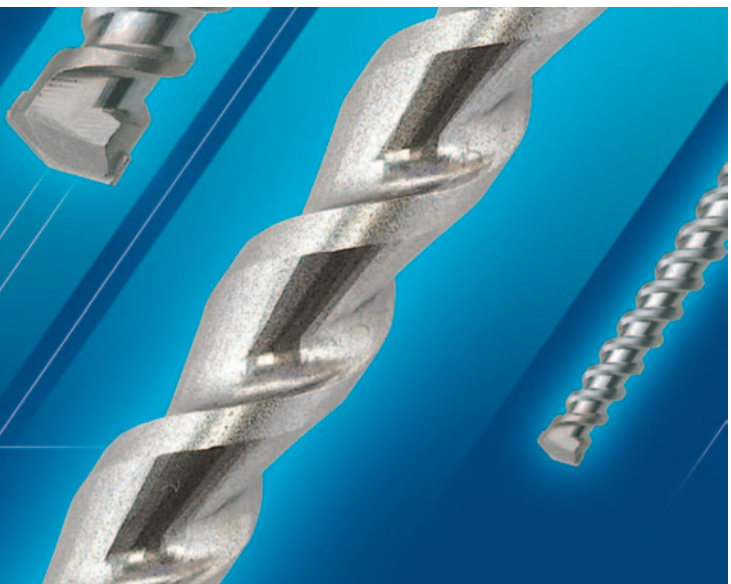
Copper brazing between body and tip for ultimate strength.

### Drill bits that work harder, for longer

- Multi-carbide tip technology, combined with precision machining, delivers increased strength and extended life with up to 25% more holes from one bit.
- Professional blasting and finishing reduces drill fatigue and increases the strength of the bit.
- Double flute geometry of the body gives maximum resistance to extreme torsion levels and maximises speed and penetration rates.

Ideal for: Brick work // Concrete // Block work // Other masonry

Also suitable for: Metals // Wood // Plastic // Ceramic // Tiles // Light building materials



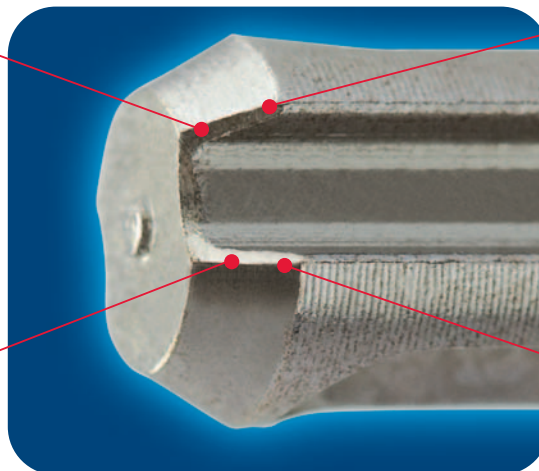
## CUTTING-EDGE 'FAST-FIT' BIT-CHANGE TECHNOLOGY



The widened entry profile of the 'Fast-Fit' Eclipse SDS drive-groove rapidly guides the shank into the locked position.

- Reduces down-time
- Minimises chuck wear
- Compatible with all SDS/SDS Plus machines

Enables drill bit to be easily located in SDS Plus chuck



Widened entry profile of SDS drive-groove for 'Fast-Fit'

Ease of location reduces wear on machine chuck

Significantly faster to load an Eclipse bit compared with a standard SDS Plus



# SDS PLUS HAMMER DRILL BITS

## Metric

Part Code	Size Ø x Length	Working Length	Part Code	Size Ø x Length	Working Length	Part Code	Size Ø x Length	Working Length
EC-SDS040011	4.0 x 110mm	50mm	EC-SDS055026	5.5 x 260mm	200mm	EC-SDS220045	22.0 x 450mm	400mm
EC-SDS050011	5.0 x 110mm	50mm	EC-SDS060026	6.0 x 260mm	200mm	EC-SDS240045	24.0 x 450mm	400mm
EC-SDS055011	5.5 x 110mm	50mm	EC-SDS065025	6.5 x 250mm	200mm	EC-SDS250045	25.0 x 450mm	400mm
EC-SDS060011	6.0 x 110mm	50mm	EC-SDS080026	8.0 x 260mm	200mm	EC-SDS260045	26.0 x 450mm	400mm
EC-SDS070011	7.0 x 110mm	50mm	EC-SDS100026	10.0 x 260mm	200mm	EC-SDS280045	28.0 x 450mm	400mm
EC-SDS080011	8.0 x 110mm	50mm	EC-SDS110026	11.0 x 260mm	200mm	EC-SDS300045	30.0 x 450mm	400mm
EC-SDS100011	10.0 x 110mm	50mm	EC-SDS120025	12.0 x 250mm	200mm			
			EC-SDS130025	13.0 x 250mm	200mm	EC-SDS080060	8.0 x 600mm	550mm
EC-SDS040016	4.0 x 160mm	100mm	EC-SDS140025	14.0 x 250mm	200mm	EC-SDS100060	10.0 x 600mm	550mm
EC-SDS050016	5.0 x 160mm	100mm	EC-SDS150025	15.0 x 250mm	200mm	EC-SDS120060	12.0 x 600mm	550mm
EC-SDS055016	5.5 x 160mm	100mm	EC-SDS160025	16.0 x 250mm	200mm	EC-SDS140060	14.0 x 600mm	550mm
EC-SDS060016	6.0 x 160mm	100mm	EC-SDS180025	18.0 x 250mm	200mm	EC-SDS160060	16.0 x 600mm	550mm
EC-SDS065016	6.5 x 160mm	100mm	EC-SDS220025	22.0 x 250mm	200mm	EC-SDS180060	18.0 x 600mm	550mm
EC-SDS070016	7.0 x 160mm	100mm	EC-SDS240025	24.0 x 250mm	200mm	EC-SDS200060	20.0 x 600mm	550mm
EC-SDS080016	8.0 x 160mm	100mm	EC-SDS250025	25.0 x 250mm	200mm	EC-SDS220060	22.0 x 600mm	550mm
EC-SDS090016	9.0 x 160mm	100mm	EC-SDS260025	26.0 x 250mm	200mm	EC-SDS250060	25.0 x 600mm	550mm
EC-SDS100016	10.0 x 160mm	100mm						
EC-SDS110016	11.0 x 160mm	100mm	EC-SDS100031	10.0 x 310mm	250mm	EC-SDS160080	16.0 x 800mm	750mm
EC-SDS120016	12.0 x 160mm	100mm	EC-SDS110031	11.0 x 310mm	250mm			
EC-SDS130015	13.0 x 150mm	100mm	EC-SDS120030	12.0 x 300mm	250mm	EC-SDS100100	10.0 x 1000mm	950mm
EC-SDS140015	14.0 x 150mm	100mm	EC-SDS130030	13.0 x 300mm	250mm	EC-SDS120100	12.0 x 1000mm	950mm
EC-SDS150015	15.0 x 150mm	100mm	EC-SDS140030	14.0 x 300mm	250mm	EC-SDS140100	14.0 x 1000mm	950mm
EC-SDS160015	16.0 x 150mm	100mm	EC-SDS160030	16.0 x 300mm	250mm	EC-SDS180100	18.0 x 1000mm	950mm
			EC-SDS180030	18.0 x 300mm	250mm	EC-SDS200100	20.0 x 1000mm	950mm
EC-SDS050021	5.0 x 210mm	150mm	EC-SDS200030	20.0 x 300mm	250mm	EC-SDS220100	22.0 x 1000mm	950mm
EC-SDS055021	5.5 x 210mm	150mm	EC-SDS250036	10.0 x 360mm	300mm	EC-SDS250100	25.0 x 1000mm	950mm
EC-SDS060021	6.0 x 210mm	150mm						
EC-SDS065021	6.5 x 210mm	150mm	EC-SDS060045	6.0 x 450mm	400mm			
EC-SDS070021	7.0 x 210mm	150mm	EC-SDS080045	8.0 x 450mm	400mm			
EC-SDS080021	8.0 x 210mm	150mm	EC-SDS100045	10.0 x 450mm	400mm			
EC-SDS090021	9.0 x 210mm	150mm	EC-SDS120045	12.0 x 450mm	400mm			
EC-SDS100021	10.0 x 210mm	150mm	EC-SDS130045	13.0 x 450mm	400mm			
EC-SDS120021	12.0 x 210mm	150mm	EC-SDS140045	14.0 x 450mm	400mm			
EC-SDS140020	14.0 x 200mm	150mm	EC-SDS150045	15.0 x 450mm	400mm			
EC-SDS160020	16.0 x 200mm	150mm	EC-SDS160045	16.0 x 450mm	400mm			
EC-SDS180020	18.0 x 200mm	150mm	EC-SDS180045	18.0 x 450mm	400mm			
EC-SDS200020	20.0 x 200mm	150mm	EC-SDS200045	20.0 x 450mm	400mm			

## Imperial

Part Code	Size Ø x Length	Working Length	Part Code	Size Ø x Length	Working Length	Part Code	Size Ø x Length	Working Length
EC-SDS031604	3/16 x 4"	2"	EC-SDS031608	3/16 x 8"	6"	EC-SDS058012	5/8 x 12"	10"
EC-SDS014004	1/4 x 4"	2"	EC-SDS073208	7/32 x 8"	6"	EC-SDS034012	3/4 x 12"	10"
EC-SDS093294	9/32 x 4"	2"	EC-SDS014008	1/4 x 8"	6"	EC-SDS078012	7/8 x 12"	10"
EC-SDS051604	5/16 x 4"	2"	EC-SDS051608	5/16 x 8"	6"	EC-SDS100012	1 x 12"	10"
			EC-SDS038008	3/8 x 8"	6"	EC-SDS038018	3/8 x 18"	16"
EC-SDS031606	3/16 x 6"	4"	EC-SDS058008	5/8 x 8"	6"	EC-SDS012018	1/2 x 18"	16"
EC-SDS073206	7/32 x 6"	4"	EC-SDS034008	3/4 x 8"	6"	EC-SDS091618	9/16 x 18"	16"
EC-SDS014006	1/4 x 6"	4"				EC-SDS058018	5/8 x 18"	16"
EC-SDS093206	9/32 x 6"	4"	EC-SDS012010	1/2 x 10"	8"	EC-SDS034018	3/4 x 18"	16"
EC-SDS051606	5/16 x 6"	4"	EC-SDS058010	5/8 x 10"	8"	EC-SDS078018	7/8 x 18"	16"
EC-SDS038006	3/8 x 6"	4"				EC-SDS100018	1 x 18"	16"
EC-SDS071606	7/16 x 6"	4"	EC-SDS073212	7/32 x 12"	10"			
EC-SDS012006	1/2 x 6"	4"	EC-SDS051612	5/16 x 12"	10"			
EC-SDS091606	9/16 x 6"	4"	EC-SDS071612	7/16 x 12"	10"	EC-SDS058024	5/8 x 24"	22"
EC-SDS058006	5/8 x 6"	4"	EC-SDS012012	1/2 x 12"	10"	EC-SDS100024	1 x 24"	22"
EC-SDS034006	3/4 x 6"	4"	EC-SDS091612	9/16 x 12"	10"			

Non-standard sizes are available subject to lead-time, minimum order quantity and pricing agreement.

### Innovative point-of-sale support

Eclipse SDS drill bits come in a range of attractive, user-friendly packaging, making it easier for your customer to select the tools that they want. Ranging from the compact steel merchandising stand down to the individual packaging units, this innovative packaging has the same professional quality finish as the drill range itself.









CELEBRATING  
OVER  
**200**  
YEARS  
OF EXPERIENCE

Neill Tools Ltd, A Spear & Jackson Group Company,  
Atlas Way, Atlas North, Sheffield S4 7QQ, England

[www.eclipse-tools.co.uk](http://www.eclipse-tools.co.uk)

e-mail: [export@neill-tools.co.uk](mailto:export@neill-tools.co.uk)

e-mail: [sales@spear-and-jackson.com](mailto:sales@spear-and-jackson.com)

Telephone: +44 (0) 114 281 4242 Fax: +44 (0) 114 281 4252/53

Due to continuous product development and improvement, Neill Tools reserves the right to modify product design and materials without prior notice.