



SPEAR & JACKSON



**SPEAR &
JACKSON**
PREDATOR
FIRST FIX 7 PPI

Hand and Contractors Tools
THE TOOLS TO TRUST

Spear & Jackson
Since 1760



THE TOOLS TO TRUST

Spear & Jackson was founded in the City of Sheffield which is famous for the production of steel, cutlery and hand tools and continues to be our home over 250 years later.

In 1889, James Neill formed his own company adopting the Eclipse brand name. Initially manufacturing steel, he moved on to manufacture machine knives, woodworking tools and hacksaw blades, for which the company is best known.

The Spear & Jackson range was developed independently of Eclipse branded products until 1985 when James Neill acquired the Spear & Jackson group, subsequently renaming the company as Spear & Jackson.

The Spear & Jackson brand is probably best known in the UK for our unparalleled offering of quality ranges of garden digging and cultivating tools and cutting tools, all of which are designed to appeal to all levels of garden expertise and budget.

As you would expect with over 250 years of experience, the Spear & Jackson ground work product offering has widened to accommodate natural product extensions such as contractors shovels and rakes, agricultural tools and landscaping products.

Spear & Jackson hand tools developed alongside our ground work ranges and include tools for DIY and professional use, with our market leading "Predator" branded woodsaws being the first range to be application lead, giving users the most appropriate saw for the task.

We also sell a wide range of builder's tools and accessories with prices and qualities to suit all levels of expertise including the well known Tyzack brand of professional brick laying and plasterer's tools.

Spear & Jackson UK is a division of

the Spear & Jackson Group, which also includes within it's other divisions the following brands:

- Moore & Wright
- Eclipse Magnetics
- Bowers
- Baty
- Robert Sorby

Spear & Jackson also have sites in North America, France, China, New Zealand and Australia.

Throughout development of the Spear & Jackson brand, the company has always continued to innovate both in terms of new ideas and applications, using new technologies and combining new and traditional materials to create reliable, superb quality, highly functional tools at affordable prices, creating our enviable reputation as a supplier of **the tools to trust**.

Spear & Jackson
Since 1760

QUICK FACTS



- UK & Export Head office on 10 acre site based in Sheffield, England
- 97,000 ft² warehouse
- Over 3500 tools distributed to both our export and UK customers every week
- Products stocked by a large network of major DIY retailers and merchants





NEW PRODUCT HIGHLIGHTS



B98INS



SJ2408



FS610X400



Rafter Squares

HAND TOOLS

- B98INS
Insulation Saw see page 9
- FS610X400
Framing Square see page 17
- SJARS300 & SJARS180
Rafter Squares see page 17
- SD5PS & SD8PS
Screwdriver Sets see page 50
- SJ2408
Farmers File see page 194



Screwdriver Sets

Hand & Contractors Tools

| | | |
|--|-----|--|
| Brand Heritage | P2 | |
| New Product Highlights | P4 | |
| Woodworking Tools Range | P6 | |
| Predator™ Saws | P7 | |
| Professional Woodsaws | P10 | |
| Traditional Woodsaws and Accessories | P12 | |
| Predator™ Bow Saws | P13 | |
| Carpenters Range | P14 | |
| Builders' Tools Range | P18 | |
| Tyzack Brickwork Trowels | P20 | |
| Tyzack Plastering Trowels | P28 | |
| Tyzack Drylining and Plastering Accessories | P30 | |
| Tyzack Ancillary Tools | P32 | |
| S&J Brickwork and Plastering Tools | P34 | |
| Mortar Master Trowels | P36 | |
| Spear & Jackson Hammers Range | P38 | |
| Eclipse Cold Chisels, Wood Chisels and Wrecking Bars Range | P42 | |
| Spear & Jackson Screw Drivers Range | P48 | |
| Mark, Measure and Cut Range | P52 | |
| Tape Measures | P53 | |
| Chalk Line | P54 | |
| Utility Knives and Blades | P55 | |
| Spirit Levels | P56 | |
| Contractors' Tools Range | P58 | |
| Open Socket Shovels | P62 | |
| Solid Socket Shovels | P66 | |
| Tubular Steel Shovels | P68 | |
| Tubular Steel Forks | P71 | |
| Strapped Tools | P72 | |
| Fibrelite Range | P74 | |
| Insulated Range | P76 | |
| Tarmac and Asphalt Tools | P81 | |
| Contractor and Landscaping Tools | P84 | |



PREDATOR[™]
are quite simply
the best saws
you can buy!

Woodworking Tools

Predator[™] Saws

Our range of Predator[™] hardpoint saws have been specially developed to meet the needs of even the most demanding professional.

Spear & Jackson began making saws over 260 years ago. The wealth of experience gained over this period of time is just one of the many reasons why **Spear & Jackson** has such a unique reputation.

The **Predator[™]** range includes saws for four specialist purposes, giving users the most appropriate saw for the task - first fix woodworking, second fix woodworking, laminate, and UPVC cutting.

The range also includes our bestselling multi-purpose Universal saw, our Triplefast saw and our Predator[™] X fleam tooth saw. All saws are heat-treated using the very latest technology to ensure outstanding durability and performance.





Woodworking Tools

Predator™ Saws

Our range of Predator™ hardpoint saws have been specially developed to meet the needs of even the most demanding professional

B9820, B9822 - Predator™ Universal Saw

General purpose saw for use along and across the grain, ideal for timber, hardwood, chipboard and MDF

- Fast cut - rapid clean cutting action
- Rigid blade minimises whip and vibration
- Comfortable handle Suregrip® soft feel ergonomic grip and finger guide for improved accuracy, also incorporating a useful 45/90° guide



B9820: 20" x 8pts, Medium Finish B9822: 22" x 8pts, Medium Finish

B98FF - Predator™ First Fix Saw

A coarser cutting saw for use along and across the grain

- Fast cut - rapid, clean cutting action
- Rigid blade minimises whip and vibration
- Use with all rough sawn timber
- Comfortable handle Suregrip® soft feel ergonomic grip and finger guide for improved accuracy, also incorporating a useful 45/90° angle guide



B98FF: 22" x 7pts, Rough Finish

B98SF - Predator™ Second Fix Saw

A fine cutting saw for use along and across the grain, ideal for planed wood, architraves, skirting, and dado rails

- Fast cut, rapid, clean cutting action
- Rigid blade minimises whip and vibration
- Comfortable handle Suregrip® soft feel ergonomic grip and finger guide for improved accuracy, also incorporating useful 45/90° angle guide



B98SF: 20" x 10pts, Fine Finish

B98LAMINATE - Predator™ Laminate Saw

A hardpoint saw delivering a fine cut, ideal for use on laminate flooring, formica and beading

- Fast cut, rapid, clean cutting action
- Rigid blade minimises whip and vibration
- Comfortable handle Suregrip® soft feel ergonomic grip and finger guide for improved accuracy, also incorporating a useful 45/90° angle guide



B98LAMINATE: 20" x 14pts, Extra Fine

The soft feel Suregrip® handle and finger guide have been designed to improve cutting accuracy

B98UPVC - Predator™ UPVC Saw

A hardpoint saw for cutting UPVC and hard plastics, ideal for cutting sills, trims and plastic pipes

- Fast clean cutting action
- Rigid blade minimises whip and vibration
- Comfortable handle Suregrip® soft feel ergonomic grip and finger guide for improved accuracy, also incorporating a useful 45/90° angle guide



B98UPVC: 20" x 14pts, Fine Finish

B98X - Predator™ X Saw

Fleam teeth for fastest cut along and across the grain on forward and reverse stroke, ideal for timber, hardwood, chipboard and MDF

- Rigid blade minimises whip and vibration
- Comfortable handle Suregrip® soft feel ergonomic grip and finger guide for improved accuracy, also incorporating a useful 45/90° angle guide



B98X: 22" x 8pts, Medium Finish

B98TRIPLE - Predator™ Triplefast Saw

A fine cutting saw for cutting along and across the grain, ideal for a smooth finish on soft woods

- Triple ground tooth configuration
- Rigid blade minimises whip and vibration
- Comfortable handle Suregrip® soft feel ergonomic grip and finger guide for improved accuracy, also incorporating a useful 45/90° angle guide



B98TRIPLE: 22" x 10pts, Medium Finish

B98INS - Predator™ Insulation Saw

A specially designed blade that delivers a smooth cutting action, significantly reducing the amount of dust and air-borne particles created when cutting insulation materials, for a safer working environment

- Built-in removable blade guard for safe storage
- Suitable for cutting a range of insulation materials including: Expanding Foam, Sponge Insulation, Fibreglass Insulation, Foam and Pipe Insulation



Shown with red blade cover

B98INS measures 350mm/14"



Woodworking Tools

Professional Woodsaws

Professional woodsaws, designed for various applications, ensuring there is always the right tool for the job!

B98FLOOR - Predator™ Floorboard Saw

Specifically designed for cutting flooring, it has a curved end to make starting cutting easier

- Hand set and sharpened teeth for precision
- High carbon steel blade
- Comfortable handle - Suregrip® soft feel ergonomic grip and finger guide for accuracy, also incorporating a useful 45/90° angle guide
- Fleam tooth for cutting along and across the grain on both the forward and reverse stroke



B98FLOOR: 11" x 8pts, Medium Finish

B9810, B9812 - Predator™ Tenon Saws

Ideal for cutting out a tenon and cutting pelmets, moulding, dowelling, coving, architraves and skirting

- A fine cut with a smooth, clean cutting action
- Solid steel back for maximum rigidity
- Comfortable handle - Suregrip® soft feel ergonomic grip and finger guide for accuracy, also incorporating a useful 45/90° angle guide



B9810: 10" x 15pts, Fine Finish B9812: 12" x 15pts, Fine Finish

B9814 - Predator™ Toolbox Saw

Ideal for cutting pelmets, mouldings, dowelling, coving, architraves and skirting

- A fine cut with smooth cutting via push/pull action
- Rigid blade minimises whip and vibration
- Comfortable handle - Suregrip® soft feel ergonomic grip and finger guide for accuracy, also incorporating a useful 45/90° angle guide



B9814: 14" x 14pts, Fine Finish

B9520, B9522 - Universal Suregrip® Handle Saw

For general use cutting along and across the grain with a standard finish

- Finger rest for both left and right handed users
- Comfortable Suregrip® moulded handle incorporating useful 45/90° angle guide
- Precision cross ground teeth for extra sharpness



B9520: 20" x 8pts, Medium Finish B9952: 22" x 8pts, Medium Finish

B9422 - Universal Hard Feel Suregrip® Handle Saw

For general use cutting along and across the grain with a standard finish

- Finger rest for both left and right handed users
- Tough hard feel moulded handle, incorporating useful 45/90° angle guide
- Precision cross ground teeth for extra sharpness



B9422: 22" x 8pts, Medium Finish



Woodworking Tools

Traditional Woodsaws and Accessories

Our range of traditional Tenon and Skew Back saws with traditional wooden handles

9540B, 9550B - Traditional Brass Back

For joint cutting and sawing small pieces of wood and wood based materials

- Universal teeth for general use, cuts along and across the grain
- Brass back for maximum rigidity
- Comfortable, strong wooden handle securely fixed by rivets
- High carbon steel blade
- Precision ground teeth



9540B: 10" x 15pts, Fine Finish 9550B: 12" x 15pts, Fine Finish

5410Y - Professional Tenon Saw

Used for joint cutting & sawing small pieces of wood

- Universal teeth for general use, cuts along and across the grain
- Precision cross ground teeth for extra sharpness
- Solid brass back for maximum rigidity
- Comfortable wooden handle secured with solid brass screws
- Handle can be unscrewed for resharpening



5410Y: 10" x 13pts, Fine Finish

9500R, 9515K - Traditional Skew

Cuts timber chipboard, plywood and other wood based materials

- Universal teeth for general use, cuts along and across the grain
- Precision cross ground teeth
- Teeth can be resharpened
- Skew back for balance and reduced friction
- Comfortable wooden handle securely fixed by rivet
- High carbon steel blade



9500R: 22" x 10pts, Medium Finish 9515K: 24" x 7pts, Rough Finish

94-370R - Saw Tooth Setter

Used for setting teeth on most types of resharpenable woodsaws



94-370R: Length 180mm, Height 90mm

Woodworking Tools

Predator™ Bow Saws

Our professional quality Bow Saws feature adjustable tensioning and a one rivet ultra-quick blade change system with adjustable tensioner

B9821-BOWSAW 21" Predator™ Bow Saw

- 21" (530mm)
- Tension adjuster for faster, cleaner cuts for longer
- Soft feel ergonomic handle/hand guard
- Easy, rapid blade change
- Blades available for both hard wood (Peg Tooth) and soft/green wood (Raker Tooth)
- Sold fitted with Peg Tooth Blade



B9824-BOWSAW 24" Predator™ Bow Saw

- 24" (610mm)
- Tension adjuster for faster, cleaner cuts for longer
- Soft feel ergonomic handle/hand guard
- Easy, rapid blade change
- Blades available for both hard wood (Peg Tooth) and soft/green wood (Raker Tooth)
- Sold fitted with Peg Tooth Blade



Spare Blades

B9821WETBLADE 21" Raker Tooth Bow Saw Blade

Predator™ Bow Saw Raker Tooth Spare Blades

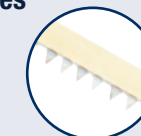
- 21" (530mm)
- Ideal for soft/Green wood
- Peg Tooth
- 4PI Carbon steel, hard pointed blade



B9821DRYBLADE 21" Peg Tooth Bow Saw Blade

Predator™ Bow Saw Peg Tooth Spare Blades

- 21" (530mm)
- Ideal for hard/dry wood
- Peg Tooth
- 4PI Carbon steel, hard pointed blade



Spare Blades

B9824WETBLADE 24" Raker Tooth Bow Saw Blade

Predator™ Bow Saw Raker Tooth Spare Blades

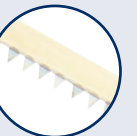
- 24" (610mm)
- Ideal for soft/Green wood
- Peg Tooth
- 4PI Carbon steel, hard pointed blade



B9824DRYBLADE 24" Peg Tooth Bow Saw Blade

Predator™ Bow Saw Peg Tooth Spare Blades

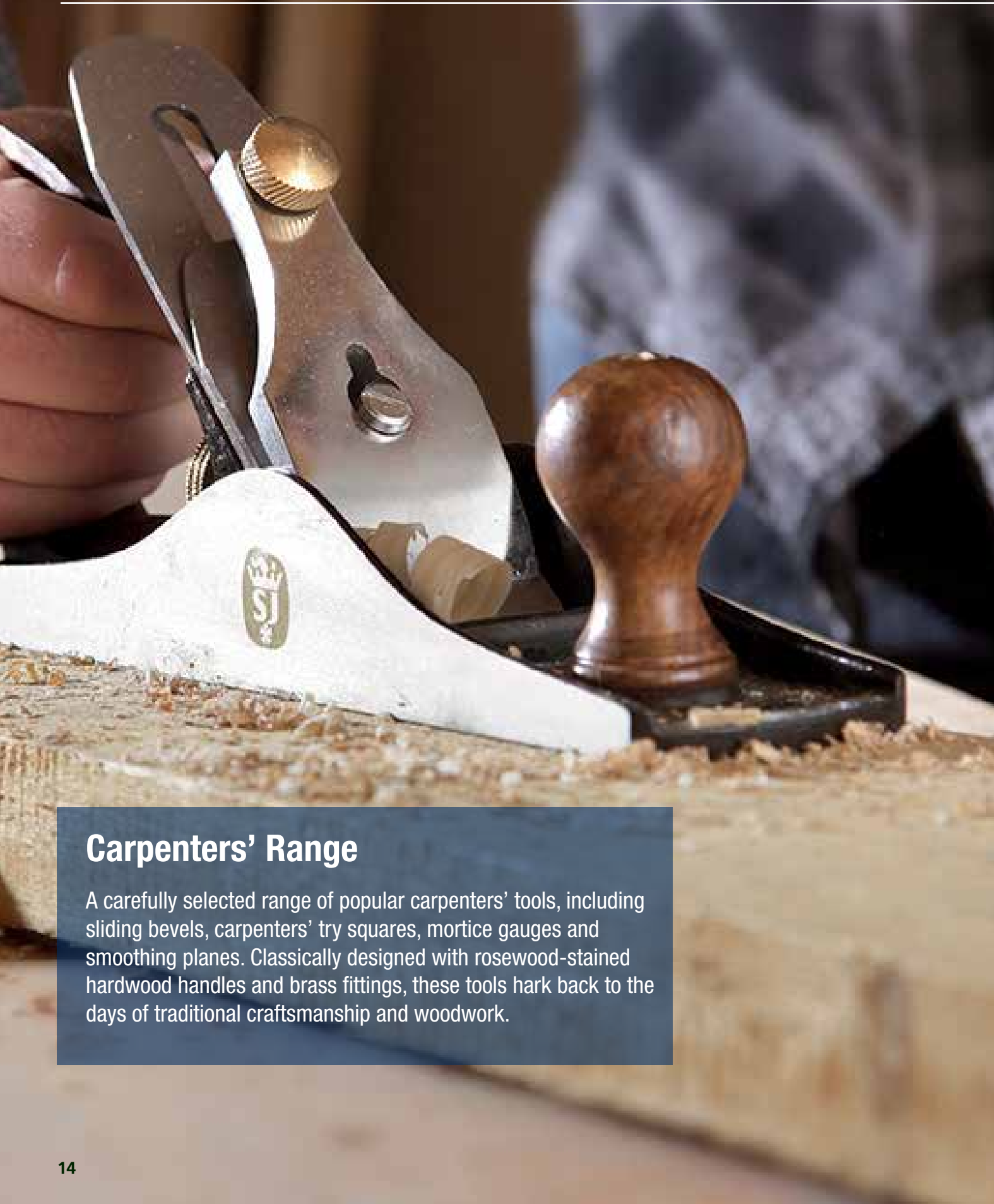
- 24" (610mm)
- Ideal for hard/dry wood
- Peg Tooth
- 4PI Carbon steel, hard pointed blade





Woodworking Tools

Carpenters' Range



Carpenters' Range

A carefully selected range of popular carpenters' tools, including sliding bevels, carpenters' try squares, mortice gauges and smoothing planes. Classically designed with rosewood-stained hardwood handles and brass fittings, these tools hark back to the days of traditional craftsmanship and woodwork.

CT4PS - 4 Piece Tool Set

- Durable hardwood handles
- Brass fittings
- Spring steel blades

Set Contains:

- 9"/230mm Sliding Bevel
- 9"/230mm Carpenter's Set Square
- 8"/200mm Mortice Gauge
- No.4 Smoothing Plane



CSP3 - No.3 Smoothing Plane

- Ductile cast iron painted gloss black with ground sides and bottom
- Blade retaining block: Ductile cast iron painted gloss black
- Block Length and Width: 110 x 44 ± 0.5mm screwed to base
- Base Length: 234 ± 2mm
- Base Width: 55 x 38 ± 1mm
- 45mm(w) high carbon steel blade
- Replacement blade available - CSP3BLADE



CSP4 - No.4 Smoothing Plane

- Ductile cast iron painted gloss black with ground sides and bottom
- Base Length: 248 ± 2mm
- Base Width: 63 x 42 ± 1mm
- Blade retaining block: Ductile cast iron painted gloss black
- 50mm(w) high carbon steel blade
- Replacement blade available - CSP4BLADE



CBP65 - No.6 1/2" Block Plane

- Ductile cast iron painted gloss black with ground sides and bottom
- Base Length: 157.0 ± 2mm
- Base Width and Depth: 44 x 28 ± 1mm
- Blade retaining block: Ductile cast iron painted gloss black
- 35mm wide low angle cutter and fully adjustable mouth
- Replacement blade available - CBP65BLADE



CBP95 - No.9 1/2" Block Plane

- Ductile cast iron painted gloss black with ground sides and bottom
- Base Length: 157.0 ± 2mm
- Base Width and Depth: 44 x 28 ± 1mm
- Blade retaining block: Ductile cast iron painted gloss black
- 42mm wide low angle cutter and fully adjustable mouth
- Replacement blade available - CBP95BLADE



CJP5 - No.5 Jack Plane

- Ductile cast iron painted gloss black with ground sides and bottom
- Base Length: 355.0 ± 2mm
- Base Width: 63 x 47 ± 1mm
- Blade retaining block: Ductile cast iron painted gloss black
- 50mm(w) high carbon steel blade
- Replacement blade available - CJP5BLADE



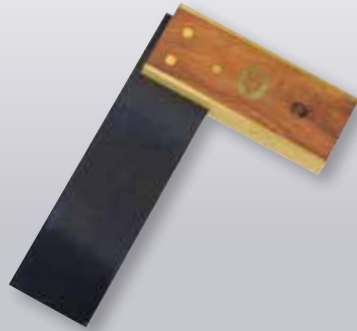


Woodworking Tools

Carpenters' Range

CTS6 - 6" Try Square

- Rosewood stained hardwood with brass top and bottom faces
- Base Length: 120 ± 1mm
- Base Depth and Width: 48 x 18.0 ± 0.5mm
- Brass Edge Thickness: 3mm
- Spring Steel Blade



CTS9 - 9" Try Square

- Rosewood stained hardwood with brass top and bottom faces
- Base Length: 165 ± 1mm
- Base Depth and Width: 48 x 18.0 ± 0.5mm
- Brass Edge Thickness: 3mm
- Spring Steel Blade



CTS12 - 12" Try Square

- Rosewood stained hardwood with brass top and bottom faces
- Base Length: 203 ± 1mm
- Base Depth and Width: 48 x 18.0 ± 0.5mm
- Brass Edge Thickness: 3mm
- Spring Steel Blade



CSB75 - 7 1/2" Sliding Bevel

- Rosewood stained hardwood with brass top and bottom faces
- Base Length: 136 ± 1mm
- Base Depth and Width: 26.5 ± 1mm x 18.0 ± 0.5mm
- Brass Edge Thickness: 3mm
- Spring Steel Blade



CSB9 - 9" Sliding Bevel

- Rosewood stained hardwood with brass top and bottom faces
- Base Length: 162 ± 1mm
- Base Depth and Width: 26.5 ± 1mm x 18.0 ± 0.5mm
- Brass Edge Thickness: 3mm
- Spring Steel Blade



CSB105 - 10 1/2" Sliding Bevel

- Rosewood stained hardwood with brass top and bottom faces
- Base Length: 179 ± 1mm
- Base Depth and Width: 26.5 ± 1mm x 18.0 ± 0.5mm
- Brass Edge Thickness: 3mm
- Spring Steel Blade



CMKG - 8" Marking Gauge

- Block - Rosewood stained hardwood with 2 brass plates on the working face, round brass bar through top section and brass lock screw on top
- Block size: 66 x 55 x 28 ± 1mm
- Brass Plates in Block: 7 x 3mm
- Brass Bar in Block: 12mm diameter



CMTG - 8" Mortice Gauge

- Block - Rosewood stained hardwood with 2 brass plates on the working face, round brass bar through top section and brass lock screw on top
- Block size: 66 x 55 x 28 ± 1mm
- Brass Plates in Block: 7 x 3mm
- Brass Bar in Block: 12mm diameter



FS610X400 - 610x400mm Framing Square

- Used in framing and roofing for marking out 90° angles. Can also be used to determine the flatness of a surface or as a guide for marking cut-off work
- Carbon Steel blade for strength and durability
- Features metric and imperial graduations and common conversion tables



NEW

SJARS180 - 7" Rafter Square SJARS300 - 12" Rafter Square

- Ideal for typical building and projects, used for marking out 45° and 90° angles
- Can serve as a saw guide, line scribe, ruler, mitre, framing square and protractor
- Strong, durable cast aluminium alloy body
- Corrosion resistant
- Black matt finish to prevent glare
- Includes common conversion tables



NEW





Craftsman-made quality for over 200 years

Craftsmanship quality dating back to 1760, our Builders' Tools range has developed over time to meet the current needs of modern-day building. With three different ranges available, we provide the perfect tools for every budget and customer, be it professionals or home DIYers.

Builders' Tools Range

Tyzack

By expertly combining advanced design, technology and our commitment to quality, Spear & Jackson offers a comprehensive range of superb Tyzack brickwork, pointing and plastering trowels. In addition, we also offer a comprehensive range of great quality dry-lining tools, plus essential ancillary brickwork tools like brick jointers, joint rakers, chalk lines and corner blocks.



Spear & Jackson

This range is designed for hardwearing performance, comfort and ease-of-use when carrying out tasks such as brickwork, plastering, flooring and cement work.



Mortar Master

Our entry-level range of tools is ideal for the price-conscious professional, handyman or DIYer, featuring weatherproofed wooden handles and fabricated blades.



So, whatever the aim for your latest building project, Tyzack, Spear & Jackson and Mortar Master have you covered.



Tyzack

Brickwork Tools

Craftsman-made quality since 1837

Tyzack is one of the oldest builders' tool brands, founded in 1837 by Joseph Tyzack & Sons.

By expertly combining advanced design, technology and our commitment to quality, Spear & Jackson offers a comprehensive range of superb Tyzack brickwork tools.

Each of our trowels is crafted from the finest carbon steel with a solid forged blade and through tang for supreme strength. Handles are available in both traditional wood or the latest soft-feel material with ergonomic design.

TYZACK is the first choice for ultimate comfort and performance.

Tyzack professional brickworking tools with solid forged blades and plastic end caps for tapping down

10110SF, 10111SF - Tyzack Soft Feel Broad Heel Brick Trowels

- Solid forged blade
- Broad blade allows extra capacity for mortar
- Soft feel handle with integral finger guard
- Plastic end cap for tapping down
- Taper ground for progressive flexibility



10110SF: 10" Soft Feel
10111SF: 11" Soft Feel

10710SF, 10811SF, 10712SF - Tyzack Philadelphia Soft Feel, Capped, Brick Trowel

- Solid forged Philadelphia blade for added balance
- Soft feel handle with integral finger guard
- Plastic end cap for tapping down
- Taper ground for progressive flexibility



10710SF: 10" Soft Feel
10811SF: 11" Soft Feel

10712SF 12" Soft Feel

10811V - Tyzack Canadian, Leather Handle Brick Trowel

- Solid forged blade
- Philadelphia blade for added balance
- 'Canadian' wood handle with leather insert for comfort
- Plastic end cap for tapping down
- Taper ground for progressive flexibility



10811V: Canadian Brick Trowel, 11", Leather Capped

10110V, 10111N - Tyzack Wood Handle Broad Heel Brick Trowels

- Solid forged blade
- Broad blade allows extra capacity for mortar
- Plastic end cap for tapping down
- Taper ground for progressive flexibility



10110V: 10" Short Wood Capped
10111N: 11" Short Wood Capped

11106Q - Tyzack Short Wood Handle Pointing Trowels

- Solid forged blade
- High tang for good knuckle clearance
- Short wood handle



11106Q: 11" Short Wood

11104SF, 11106SF Tyzack Soft Feel Handle Pointing Trowels

- Solid forged blade
- Soft feel handle with integral finger guard
- High tang for good knuckle clearance



11104SF: 4" Soft Feel
11106SF: 6" Soft Feel

11104ARCH - Tyzack Archaeology Short Wood Pointing Trowel

- Solid forged blade
- Thicker, more rigid blade for extra strength
- High tang for good knuckle clearance
- Short wood handle



11104ARCH: 4"

11104SFARCH - Tyzack Soft Feel Archaeology Pointing Trowel

- Solid forged blade
- Thicker, more rigid blade for extra strength
- High tang for good knuckle clearance
- Soft feel handle with integral finger guard



11104SFARCH: 4" Soft Feel



Tyzack Plastering Tools

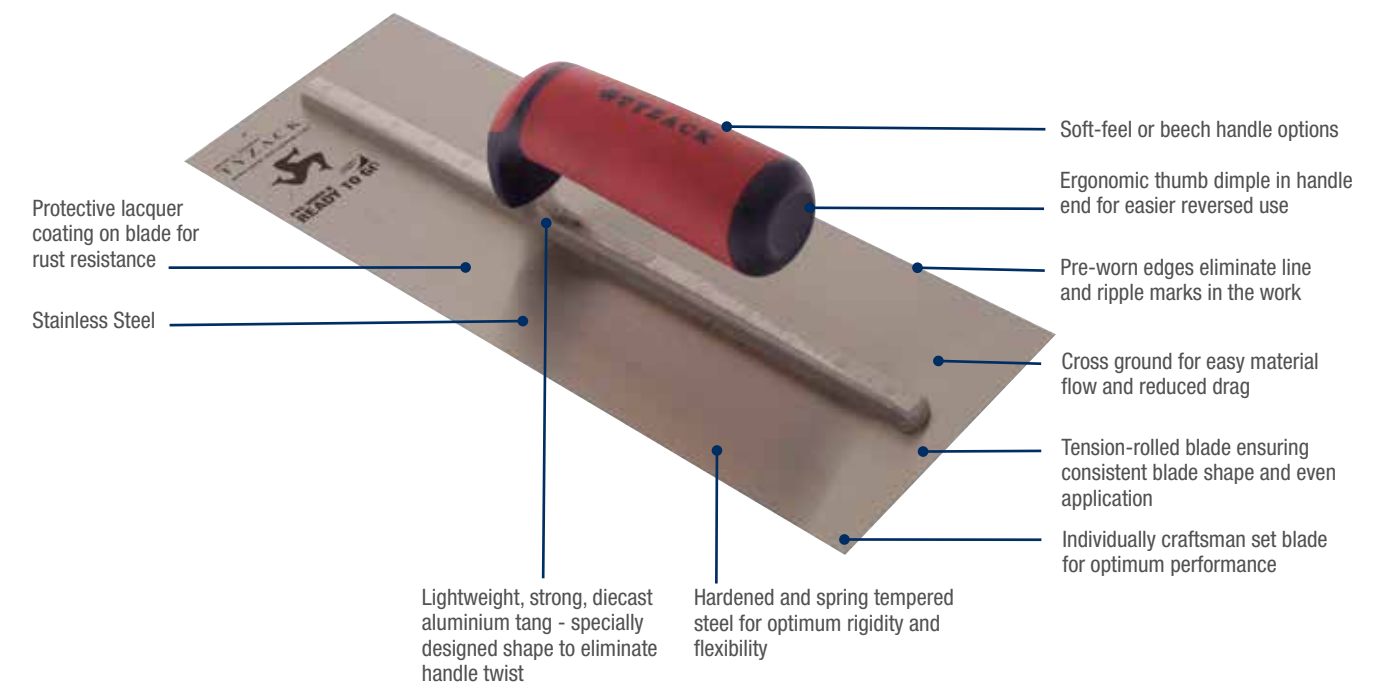
Ever since Joseph Tyzack introduced steel blades to replace traditional wooden trowels in the late 19th century, the **TYZACK** name has set the standard for quality plastering tools. Another innovation was a patented design enabling the blade to be attached to the tang without the need for the rivets to go right through the blade thereby ensuring a totally smooth finish. Importantly, all **TYZACK** trowels are hand 'dished' by time served craftsmen to create a convex blade, solving the problem of 'drag lines' when finishing.

Additional features such as hardened and spring tempered blades also ensure that **TYZACK** tools are strong, durable and give outstanding performance. Available in both carbon and stainless steel with a variety of blade sizes and ergonomic handle options, **TYZACK** is the ultimate in comfort and performance.

Tyzack Plastering Tools

'Ready To Go' Finishing Trowels

Pre-worn to professional standards, our revolutionary trowel is **'READY TO GO'** right from the start!



11458BISF - Ready to Go Finishing Trowel with Soft Feel Handle

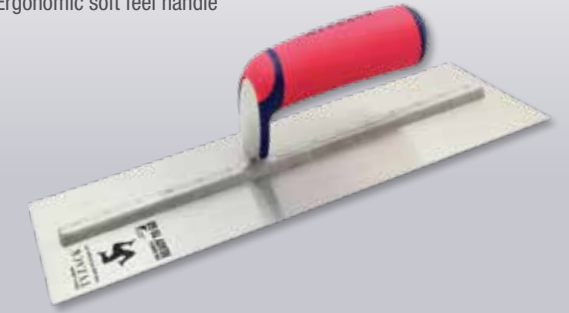
- Individually craftsman set blade for optimum performance
- Rolled tension blade ensures consistent blade shape and even distribution
- Rounded corners to prevent digging in
- Pre-worn edges to eliminate line and ripple marks in the work
- Cross ground for easy material flow and reduced drag
- Soft feel handle for comfortable use
- Stainless steel blade
- Single hang



11458BISF: 11 x 4 5/8" Soft Feel, 0.027 Thickness, Single Hang, 10 Stud Weldings

13458ERTG & 14458ERTG - ENHANCED Ready To Go Finishing Trowel with Soft Feel Handle

- Longer tang with 14 rivets for extra strength
- Pre-worn edges to eliminate line and ripple marks in the work
- Cross ground for easy material flow and reduced drag
- Ergonomic thumb dimple in handle end for easier reversed use
- Stainless steel blade for rust resistance
- Rounded corners to prevent digging in
- Rolled tension blade ensures consistent blade shape and even distribution
- Individually craftsman set blade for optimum performance
- Ergonomic soft feel handle





Tyzack Plastering Tools

Specialist Trowels

Specialist trowels for specific plastering jobs, from edging and adhesive application to gauging

13100R, 21600W - Wooden Handle Finishing Trowels

- Individually craftsman set blade
- Rolled tension blade ensures consistent blade shape and even application
- Lightweight, strong diecast aluminium tang
- Stainless steel rivets for longer life and added strength
- Mahogany, banana handle
- Blade thickness 0.027"
- 10 stud weldings



13100R: 11 x 4 5/8", Carbon Steel Blade
21600W: 11 x 4 5/8" Stainless Steel Blade

13100RSF, 13458SSF - Soft Feel Finishing Trowels

- Individually craftsman set blade
- Rolled tension blade ensures consistent blade shape and even application
- Lightweight, strong diecast aluminium tang
- Stainless steel rivets for longer life and added strength
- Soft feel handle for comfort
- Blade thickness 0.027"
- 13100RSF & 13458SSF have 10 stud welds, 13514SSF has 12



13100RSF: 11 x 4 5/8" Carbon Steel
13458SSF: 13 x 4 5/8" Stainless Steel

13718G - Mahogany Wooden Handle Flooring Trowel

Used for applying & finishing mortar on floors

- Rolled tension blade ensures consistent blade shape and even application
- Lightweight, strong diecast aluminium tang with back stay for added rigidity
- Stainless steel rivets for longer life and added strength
- Double hang
- Blade thickness 0.056"
- 13716K has 7 stud welds, 13718G has 8



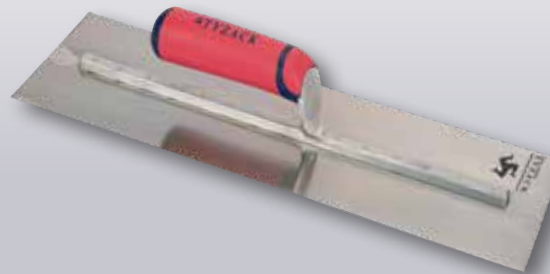
13718G: 18" Carbon Steel

Constructed to professional standards with individually craftsman set blades



13858NSF - Soft Feel Handle Cementing Trowel

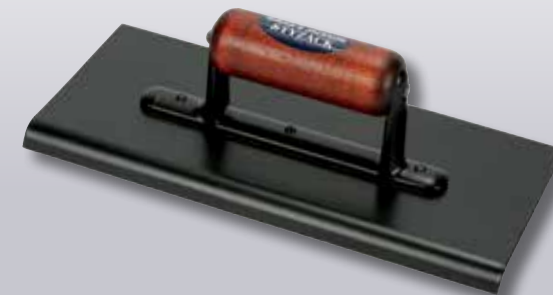
- Individually craftsman set blade
- Extra long blade
- Rolled tension blade ensures consistent blade shape and even application
- Thicker blade for added rigidity
- Lightweight, strong diecast aluminium tang
- Stainless steel rivets for longer life and added strength
- Soft feel handle for comfort
- Blade thickness 0.032"
- 14 stud weldings



13858NSF: 16 x 4 5/8" Carbon Steel

15200W - Straight Wooden Handle Edging Trowel

- Radius edge designed to produce a rounded edge finish on freshly laid cement
- Specially profiled blade
- Double thick blade for maximised strength and rigidity
- Double hang tang for enhanced strength
- Blade thickness 0.056"



15200W: 11 x 4 1/2" Carbon Steel

11507N - Beech Handle Gauging Trowel

For mixing a small amount of plaster and filling gaps. Handy for getting into awkward places.

- Solid forged blade
- Integral finger guard
- Beech handle
- 7" blade



11507N: 7", Beech Handle

11507SF - Soft Feel Handle Gauging Trowel

For mixing a small amount of plaster and filling gaps. Handy for getting into awkward places.

- Solid forged blade
- Integral finger guard
- Soft feel handle
- 7" blade



11507SF: 7" Soft Feel Handle



Tyzack Plastering Tools

Specialist Trowels

Specialist trowels for a wide variety of jobs, from pointing to corner jointing

10565BSF - Bucket Trowel with Soft Feel Handle

Ideal for mixing and removing mortar and plaster from buckets

- Cropped blade profile for easy reach right to the bottom of the bucket
- Extra high tang for increased knuckle clearance
- Soft feel handle for extra comfort

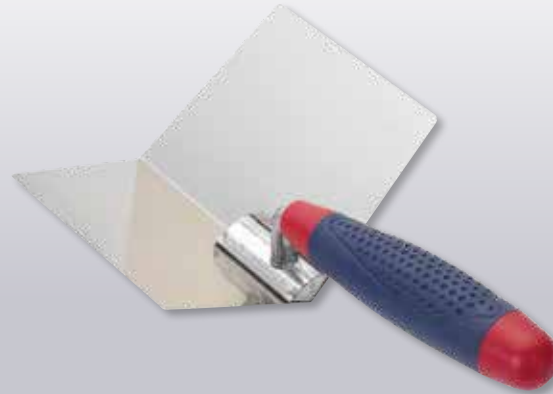


10565BSF: 6 1/2" Carbon Steel, Soft Feel

714B - Internal Soft Feel Corner Trowel

Used to produce a tight, bubble free internal corner joint

- Stainless blade for longer life
- Offset blade allows you to work right up to ceiling /down to the floor or skirting
- Soft feel handle for extra comfort

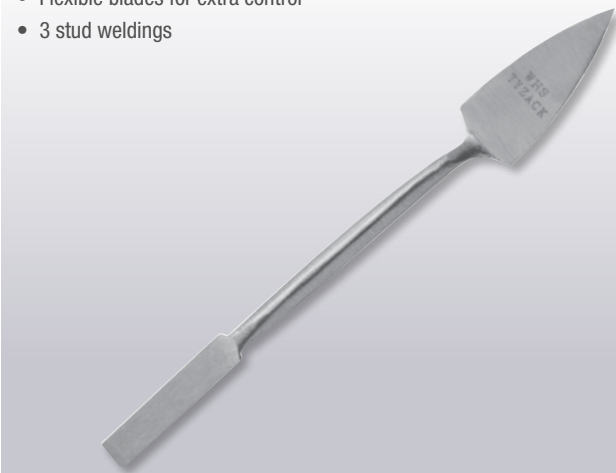


714B: 90° Internal Radius, Soft Feel

12312D - Trowel and Square

Trowel and Square is used for pointing or cementing any small scale brickwork

- Flexible blades for extra control
- 3 stud weldings



12312D 1/2"

12012N - Leaf and Square

Leaf and Square is used for delicate work when extra care and precision needs to be taken

- Flexible blades for extra control



12012N 1/2"

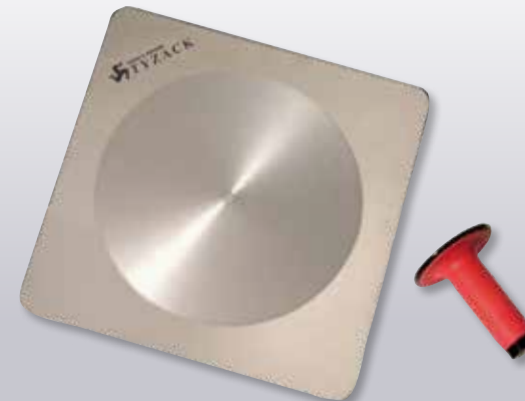
The Tyzack range of floats and hawks



12712SF - Tyzack Aluminium Hawk

For holding mixed plaster at working height, prior to application

- Made from rolled aluminium with smooth, straight edges and rounded corners
- Detachable soft feel handle



12712SF: 12 x 12", Aluminium Professional

708T - Tyzack Fully Polyurethane Hawk

For holding mixed plaster at working height, prior to application

- Made from lightweight moulded polyurethane with a smooth surface finish



708T: 13 x 13" Plastic

702S, 702L - Tyzack Plastic Floats

For use on concrete flooring

- Non-absorbent patterned face
- Can be nailed for scoring
- Lightweight
- Easy to clean



702S: Small 11"
702L: Large 14"

704N - Tyzack Sponge Float

For finishing grainy surfaces such as sand and cement mix

- A firm rubber strongly bonded to a plastic base plate



704N: 9 x 4"



Tyzack

Drylining and Plastering Accessories

Accessories for plastering and drylining jobs

74-PBSR - Tyzack Drywall Saw

Designed to drive through plasterboard

- Suregrip® handle
- Teeth cut on forward and reverse stroke
- Pointed to drive through plasterboard
- Ideal for use on timber, hardwood, chipboard and MDF



74-PBSR: 31cm

709W - Tyzack Hand Sander

For smoothing off jointing materials

- Smooth contour handle
- Aluminium base
- Neoprene pad prevents sandpaper slipping
- Uses standard sand paper - cut to size



709W: 9 1/2 x 3 1/4"

720H - Tyzack Pole Sander

Allows finishing of joints to ceilings

- Lightweight aluminium handle
- Fully pivoting head
- Extends to 1.5m/51"
- Uses standard sand paper - cut to size



720H: 10 1/4 x 3 3/8"

713A - Tyzack Support Prop

Provides an extra support on site by holding plasterboards in position to ceilings

- Pistol grip extending action
- Extends from 1.15m to 2.90m
- Universally jointed feet
- Recommended load capacity 30kg



713A: 31cm

Tyzack jointing and taping knives for plastering and drylining



710X - Tyzack Mixing Paddles

Hard wearing paddle designed to fit a high power drill and ensure a fast and complete mixing process for mortars and plasters

- Anti-rust chrome finish
- Medium diameter head



710X: 10mm Shaft Dia, 100mm Mixer Dia.

712Z - Tyzack Board Lifter

Strong one-piece aluminium construction, for the easy positioning of plasterboard and door

- Tapered front end slides easily under boards and holds firmly in place



712Z: 12 Boards

718F - 4" Tyzack Jointing Knife

Jointing knife with handle ends for knocking back protruding nails

- Suregrip® handles
- Flexible stainless steel blades



718F: 4" Jointing Knife

719G - 6" Tyzack Jointing Knife

Jointing knife with handle ends for knocking back protruding nails

- Suregrip® handles
- Flexible stainless steel blades



719G: 6" Jointing Knife



High quality brickwork and ancillary tools, specifically designed for use by the professional tradesman



SJUK-50M-8W, SJUK-50M-0Y - Bricklayers Line Merchandisers

- Strong, braided nylon bricklayer's lines which produce a straight line under tension, unlike twisted lines will not fray when cut
- Easy to unwind 50m spools, which prevent the lines from becoming tangled when stored, individually barcoded
- High visibility orange and fluorescent yellow lines are easy to see on site



SJUK-50M-8W: 12 x 50m White
SJUK-50M-0Y: 50m x 6 Orange x 6 Yellow

SJUK-50M-8WYOP - Braided Line Merchandiser

- Strong, braided nylon bricklayer's lines which produce a straight line under tension, unlike twisted lines will not fray when cut
- Easy to unwind 50m spools, which prevent the lines from becoming tangled when stored, individually barcoded
- High visibility orange, fluorescent yellow and pink and white lines all in one retailer friendly merchandiser



SJUK-50M-8WYOP:
6 x 50m White, 6 x 50m Orange, 6 x 50m Yellow, 6 x 50m Pink

10701S - Rubber Line Blocks (1 Pair) & Line

- Line: 30m 8 strand braided nylon brick line, produces a straight line under tension
- Blocks: are angled at 87.5° so that, when under tension, they square up into the corner of the brick for a better grip and a more stable line
- Rubber surface and grooves help to prevent slippage
- Lightweight and easy to use
- Highly visible fluorescent colours - easy to see, not so easy to lose



10701S: 1 Pair & 1 Line

SJ-RLB-0Y - Rubber Line Blocks Merchandiser

- 24 fluorescent pieces, 6 pairs orange and 6 pairs yellow, each block is individually barcoded
- Blocks are angled at 87.5° so that, when under tension, they square up into the corner of the brick for a better grip and a more stable line
- Rubber surface and grooves help to prevent slippage whilst in use
- Lightweight and easy to use



SJ-RLB-0Y: Merchandiser

10505Z - Line & Pins

- Cast metal pins for extended life
- 30m High visibility line



10505Z: 1 x Line, 2 x Pins

PROFLPBOX - Tyzack Line Pins

- Made from drop forged and hardened steel for strength, and resists bending under pressure
- Tapered end ensures the line pin inserts easily into surface material
- Extra large head means the line is less likely to become detached whilst in use
- Chrome plated to prevent rusting



PROFLPBOX: Merchandiser 30 pins

21258B - Tyzack Convex Brick Jointer

- For smooth finishing in between bricks



21258B: 1/2" x 5/8"



S&J Plastering Tools

Designed for hardwearing performance, comfort and ease-of-use, this range features soft-feel handles and high quality blades for brickwork, plastering, flooring and cement work. The added feature of integral finger guards on brickwork tools makes for safer working.



Brickwork & Plastering

Soft Feel Tools

High quality brickwork and ancillary tools, specifically designed for use by the professional tradesman

11605PSF/14, 11606PSF/14 - S&J 5" & 6" Pointing Trowel

- For repairing mortar joints or filling cavities
- Ergonomically shaped handle
- Fabricated blade
- Soft feel handle with integrated finger guard
- Carbon steel blade



11605PSF/14: 5" Pointing Trowel
11606PSF/14: 6" Pointing Trowel

11611PSF/14 - S&J 11" Philadelphia Trowel

- Philadelphia pattern blade for additional balance
- Polished and lacquered blade
- Fabricated carbon steel blade
- Ergonomically shaped soft feel handle with integrated finger guard



11611PSF/14: 11" Philadelphia Trowel

High quality tiling trowels and ancillary plastering tools with soft feel handles for comfortable, sustained use

11610BSF/14, 11611BSF/14 - S&J Broad Heel Trowels

10" & 11" Soft Feel Broad Heel Trowels

- Fabricated carbon steel blade
- Ergonomically shaped soft feel handle with integrated finger guard
- Polished and lacquered blade

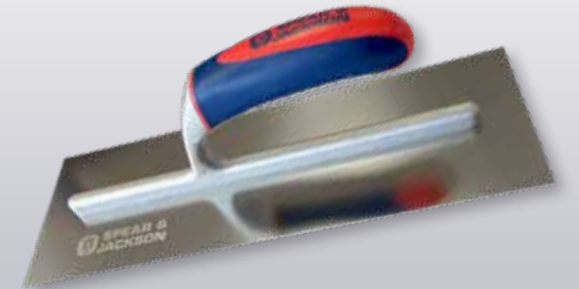


11610BSF/14: 10" Broad Heel
11611BSF/14: 11" Broad Heel

S&J Plastering Trowels

Soft Feel Plastering Trowels

- Lightweight strong diecast aluminium tang
- Rivets for longer life and added strength
- Available with a carbon or stainless steel blade in two sizes (11" or 13")
- Ergonomically shaped soft feel handle



10611CSF/14: 11" Carbon
10611SF/14: 11" Stainless Steel
10613CSF/14: 13" Carbon
10616SF/14: 13" Stainless Steel

11607GSF - S&J Gauging Trowel

7" Gauging Trowel

For mixing small amounts of plaster and filling gaps in confined spaces

- Fabricated carbon blade
- Soft feel handle with integrated finger guard
- Ergonomically shaped soft feel handle
- Polished and lacquered blade



11607GSF: 7" Carbon Gauging Trowel

10565BSF - S&J Bucket Trowel with Soft Feel Handle

Carbon Steel Bucket Trowel

Ideal for mixing and removing mortar and plaster from buckets

- Cropped blade profile for easy reach right to the bottom of the bucket
- Extra high tang for increased knuckle



10565BSF: 6 1/2" Carbon Steel, Soft Feel



Mortar Master Range

This entry level range of tools is ideal for the price conscious professional, jobbing builder or DIYer. Featuring weatherproofed wooden handles and fabricated steel blades.



Mortar Master Brickwork and Plastering Trowels

Mortar Master Brickwork and Plastering Tools feature wooden handles and fabricated steel blades

Broad Heel Trowels

Mortar Master 10 and 11"

- Fabricated blade
- Weatherproofed hardwood handle

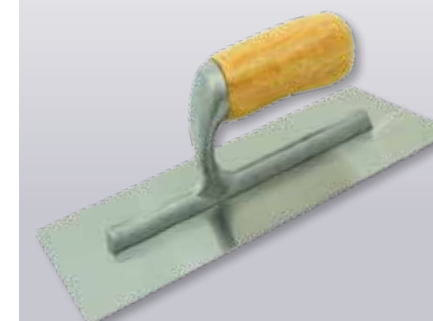


10510B: 10" Broad Heel 10511B: 11" Broad Heel

10611W - Plastering Trowel

Mortar Master Plastering Trowels

- Lightweight strong diecast aluminium tang
- Stainless rivets for longer life and added strength
- Carbon steel blade
- Weatherproofed hardwood handle



10611W: 11" Wooden Handle

10511P - Philadelphia Trowel

Mortar Master Philadelphia Trowel

- Philadelphia pattern blade provides additional balance
- Fabricated blade
- Weatherproofed hardwood handle



10511P: 11" Wooden Handle

10565B - Bucket Trowel

Mortar Master Bucket Trowel

- Fabricated blade
- Cropped blade profile to allow easy reach to bottom of bucket
- High tang for knuckle clearance



10565B: 6 1/2" Wooden Handle

10506P - Pointing Trowel

Mortar Master 6"

- Fabricated blade
- Weatherproofed hardwood handle
- For repairing mortar joints or filling cavities



10506P: 6" Wooden Handle

10507G - Gauging Trowel

Mortar Master 7" Gauging Trowel

- Fabricated blade
- Weatherproofed hardwood handle
- For mixing small amounts of plaster and filling gaps in confined spaces



10507G: 7", Wooden Handle



Hammers Range

A toolbox essential for professionals and DIYers alike, all Spear & Jackson hammers are made from first-class materials and manufactured to the highest product specifications. Forged heads are expertly heat-treated, finished and fixed to hickory, steel or fibreglass shafted handles, ensuring maximum strength, reliability and safety.

Spear & Jackson Hammers

Carpenters' Claw Hammers

Used by carpenters for fixing and removing nails. Should never be used for striking implements such as cold chisels

- Polished striking face and back of claw
- High quality forged head
- Choice of hickory, tubular steel or solid forged steel shafts
- Solid forging provides a shaft integral with the head for superior strength

SJ-CAH16 Adze Eye Claw, 454gm, Hickory Handle
SJ-CAH20 Adze Eye Claw, 567gm, Hickory Handle
SJ-CSS20, Claw, 567gm, Solid Steel Handle
SJ-CTS16, Claw, 454gm, Steel Handle



Club Hammers

Used in the building and construction industry for delivering short heavy blows, eg. with cold chisels and brick bolsters

- Polished striking face
- Hickory or fibreglass handle

SJ-MCH40 2½lb, Hickory Handle
SJ-MCH64 4lb, Hickory Handle
SJ-MCH40FG 1½lb, Fibreglass Handle
SJ-MCH64FG 4lb, Fibreglass Handle



All **SPEAR & JACKSON** hammers are made in general accordance with **British Standard BS876**. This standard is very stringent in terms of hardness testing and crack detection and demands 100% testing. **SPEAR & JACKSON** sample test for hardness and cracks in order to offer a more competitive product.



Spear & Jackson Hammers

All our Hammers are manufactured to the highest product specifications ensuring maximum strength

Bricklayers Hammers

Used by bricklayers for cutting and fitting bricks and stonework

- Square end for tapping bricks into place Chisel end for cutting bricks
- Choice of hickory or fibreglass shaft
- Polished head
- Fibreglass shafts provide oil, chemical and water resistance, 10 times stronger than timber and 8 times stronger than steel



SJ-BSH25 Bricklayers' Short Pattern, 708gm, Hickory Handle
SJ-BSF25 Bricklayers' Pattern, 680gm, Fibreglass Handle

Engineers' Ball Pein Hammers

A universal hammer with 1 flat and 1 ball pein end.
Used for striking metal objects

- Polished and chamfered striking face to avoid chipping
- Polished and hardened ball end
- Hickory handle



SJ-BPH4 113gm (¼lb) Hickory Handle
SJ-BPH8 227gm (½lb) Hickory Handle
SJ-BPH12 340gm (¾lb) Hickory Handle
SJ-BPH16 454gm (1lb) Hickory Handle
SJ-BPH24 680gm (1½lb) Hickory Handle
SJ-BPH32 908gm (2lb) Hickory Handle
SJ-BPH40 1134gm (2½lb) Hickory Handle
SJ-BPH48 1361gm (3lb) Hickory Handle

Scutch Hammers

Similar in shape to a brick hammer but with a single or double ended grooved end for taking scutch combs; replaceable bits used for cutting stone, brickwork, or for removing mortar prior to repointing.

- Single ended with one striking face and one grooved end
- Double ended with both ends grooved Hickory handle



SJ-SSH28 Single End, 567gm, Hickory Handle
SJ-SDH22 Double End, 624gm, Hickory handle
SJ-SDH25 Double End, 870gm, Hickory Handle
SJ-CC10 10" Scutch Comb

All our Hammers are manufactured in general accordance with British Standard BS876

Double Faced Sledge Hammers

Used in all industries for heavy work such as demolition or where a strong blow has to be given, eg. driving home stakes

- Longer handle for a greater striking force
- Polished striking face with chamfered edges to avoid chipping
- Choice of hickory or fibreglass shaft



SJ-DSH112 7lb, Hickory Handle
SJ-DSH160 10lb, Hickory Handle
SJ-DSH224 14lb, Hickory Handle
SJ-DSH160FG 10lb, Fibreglass Handle
SJ-DSH224FG 14lb, Fibreglass Handle

Mortar Picks

Used by bricklayers for cleaning worn and broken debris from brick and stonework prior to re-pointing

- Chisel and point or double point end available which are hardened for strength
- Hickory shaft



SJ-MPHCP Chisel & Point, Hickory Handle
SJ-MPHDP Double Point, Hickory Handle

Telephone Hammer

Lightweight hammer with a long shaft used by fitters for assembly work

- Polished striking face and pein edges
- Hickory handle withdrawal
- Slight incline on handle to allow easier access of the hand



SJ-CPP4 113gm (4oz) Hickory Handle

Slaters' Ripper

RIPPER - Used by slaters for the removal of old roofing slates

- Hardened and spring tempered blade to allow access between slates
- Specially designed ground hook for easy contact with nails and easier



SJ-SLR Slaters' Ripper

Slaters' Axe

AXE - Used for cutting and dressing slates and tiles prior to fixing

- Fine, honed blade for accurate cutting
- Spiked hook used for piercing slates



SJ-SARH Slaters' Axe - Right Hand



Eclipse Wrecking Bars

Chisels and Wrecking Bars

Specifically designed for cutting brick, concrete, paving slabs and metal, the Eclipse range of top quality cold chisels and bolsters is manufactured to British Standard specifications using the latest production methods and equipment

Eclipse Multi-Function and Flat Utility Pry Bars are used as a lever to either force two objects apart or to remove nails. They can be used for a multitude of jobs including removing moulding or skirting when replacing flooring, for removing tiles, for breaking down objects for demolition.

E-FUB15 - 15" Flat Utility Bar

- Drop-forged high grade steel
- Heat-treated for durability and a longer life
- Retail-friendly hangers



NEW

Part No
E-FUB15

Size
15"

E-MFB10 - 10" Multi-Function Pry Bar

- Flat strike face for removal of deeply embedded nails
- Retail-friendly hangers



NEW

Part No
E-MFB10

Size
10"

E-MFWC10 - 10" Multi-Function Wide Claw Pry Bar

- Wide Claw reduces material damage when prying moulding and trim
- Slotted bevelled claw for functionality and performance
- Retail-friendly hangers



NEW

Part No
E-MFWC10

Size
10"



Eclipse

Wrecking Bars, Cold Chisels and Bolsters

Our Wrecking Bars are made from heat treated, solid forged steel for maximum strength.

3 Piece Rippa Crowbar Set

- Made from heat treated, solid forged steel for maximum strength.
- 30" and 36" are for demolishing large timber structures and dismantling concrete and metal constructions.
- 18" and 24" size are ideal for demolishing plasterboard, dismantling timber frames and pulling up floorboards.
- 14" is designed to pull large nails and prise or dismantle constructed items.



RIPPA3PS
3 Piece Set Contains
14" (355mm) Crowbar
24" (610mm) Crowbar
36" (910mm) Crowbar

| Part No. | Size |
|----------|--|
| RIPPA14 | 355mm (14") |
| RIPPA18 | 450mm (18") |
| RIPPA24 | 600mm (24") |
| RIPPA30 | 750mm (30") |
| RIPPA36 | 900mm (36") |
| RIPPA3PS | Boxed set contains: 14" 24" 36" Wrecking bars |

Brick Bolsters

For cutting bricks



| Part No | Length | Blade W | Hex Dia. |
|-----------|--------|---------|----------|
| CB730K/07 | 230mm | 75mm | 19mm |
| CB740K/07 | 230mm | 100mm | 25mm |

Floorboard Chisel

For cutting floorboard tongues before lifting



| Part No | Length | Blade W | Hex Dia. |
|-----------|--------|---------|----------|
| CB770K/07 | 230mm | 6mm | 17.5mm |

Plugging Chisel

For cutting out mortar from between bricks



| Part No | Length | Width | Hex Dia. |
|-----------|--------|--------|----------|
| CB827V/07 | 250mm | 6.35mm | 15.9mm |

Eclipse

Cold Chisels



Cold chisels and bolsters manufactured from hard wearing chrome vanadium, so need re-sharpening less often, and are also even more resistant to mushrooming after prolonged use

Guarded Chisels

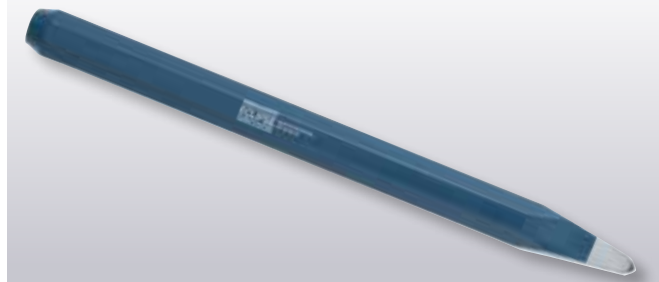
Hand guarded cold chisels fitted with strong guard designed to withstand the heaviest hammer blow and protect the user's hand from injury



| Part No. | Type | Length | Blade W | Hex Dia. |
|------------|---------------|--------|---------|----------|
| 22-410R/07 | Grooving | 250mm | 6.35mm | 15.9mm |
| 22-208R/07 | Flat | 205mm | 19mm | 15.9mm |
| 22-210R/07 | Flat | 250mm | 25.4mm | 22.2mm |
| 22-639R/07 | Brick Cutting | 230mm | 75mm | 19mm |
| 22-649R/07 | Brick Cutting | 230mm | 100mm | 25mm |
| 22-509R/07 | Floorboard | 230mm | 63.5mm | 17.5mm |

Concrete Pointing Chisel

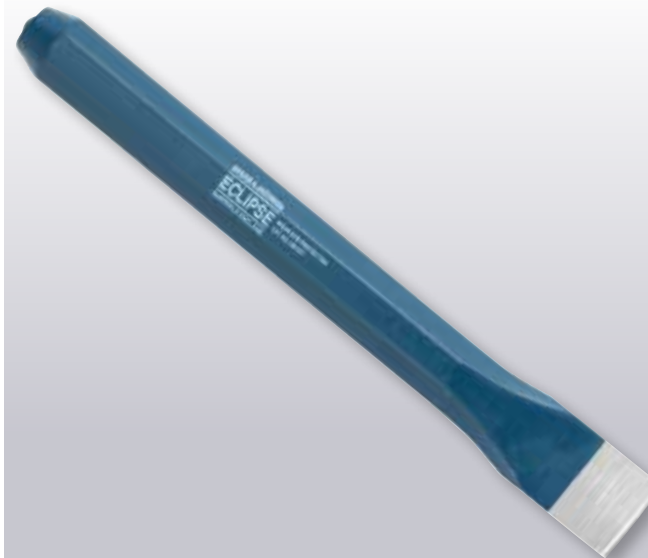
For breaking up concrete



| Part No. | Blade Length | Width | Hex Dia. |
|-----------|--------------|-------|-----------|
| CB353G/07 | 300mm (12") | 250mm | 25mm (1") |

Flat Chisels

For general cutting and chipping of metals, and for shaping, facing and cutting of stonework



| Part No. | Length | Blade Width | Hex Dia. |
|-----------|-------------|---------------|---------------|
| CB24A/07 | 100mm (4") | 6.35mm (1/4") | 6.35mm (1/4") |
| CB28G/07 | 150mm (6") | 6.35mm (1/4") | 6.35mm (1/4") |
| CB46T/07 | 125mm (5") | 9.5mm (3/8") | 9.5mm (3/8") |
| CB48E/07 | 150mm (6") | 9.5mm (3/8") | 9.5mm (3/8") |
| CB68V/07 | 150mm (6") | 12.7mm (1/2") | 12.7mm (1/2") |
| CB70H/07 | 205mm (8") | 12.7mm (1/2") | 12.7mm (1/2") |
| CB72F/07 | 250mm (10") | 12.7mm (1/2") | 12.7mm (1/2") |
| CB73N/07 | 300mm (12") | 12.7mm (1/2") | 12.7mm (1/2") |
| CB88R/07 | 150mm (6") | 15.9mm (5/8") | 12.7mm (1/2") |
| CB89H/07 | 180mm (7") | 15.9mm (5/8") | 12.7mm (1/2") |
| CB90M/07 | 205mm (8") | 15.9mm (5/8") | 12.7mm (1/2") |
| CB92N/07 | 250mm (10") | 15.9mm (5/8") | 12.7mm (1/2") |
| CB108D/07 | 150mm (6") | 19mm (3/4") | 15.9mm (5/8") |
| CB110T/07 | 205mm (8") | 19mm (3/4") | 15.9mm (5/8") |
| CB111G/07 | 230mm (9") | 19mm (3/4") | 15.9mm (5/8") |
| CB112E/07 | 250mm (10") | 19mm (3/4") | 15.9mm (5/8") |
| CB113V/07 | 300mm (12") | 19mm (3/4") | 15.9mm (5/8") |
| CB116M/07 | 450mm (18") | 19mm (3/4") | 15.9mm (5/8") |
| CB150E/07 | 205mm (8") | 25.4mm (1") | 22.2mm (7/8") |
| CB151V/07 | 230mm (9") | 25.4mm (1") | 22.2mm (7/8") |
| CB152R/07 | 250mm (10") | 25.4mm (1") | 22.2mm (7/8") |
| CB153H/07 | 300mm (12") | 25.4mm (1") | 22.2mm (7/8") |
| CB156N/07 | 450mm (18") | 25.4mm (1") | 22.2mm (7/8") |

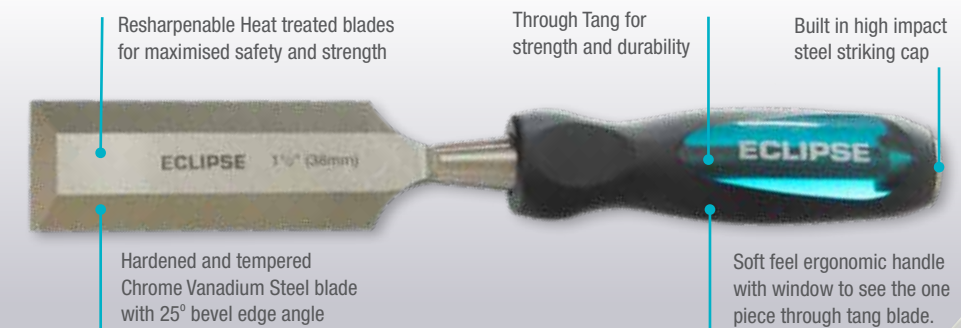


Eclipse Wood Chisels



Eclipse Wood Chisels are available individually and also in sets containing a range of sizes

High Impact Through Tang Wood Chisels



| | |
|-------------|----------------------|
| TT-BEWC1/4E | ¼" (6mm) Bevel Edge |
| TT-BEWC3/8E | ⅜" (9mm) Bevel Edge |
| TT-BEWC1/2E | ½" (12mm) Bevel Edge |
| TT-BEWC5/8E | ⅝" (15mm) Bevel Edge |
| TT-BEWC3/4E | ¾" (19mm) Bevel Edge |
| TT-BEWC1E | 1" (25mm) Bevel Edge |

| | |
|--------------|-----------------------------------|
| TT-BEWC11/4E | 1¼" (32mm) Bevel Edge |
| TT-BEWC11/2E | 1½" (38mm) Bevel Edge |
| TT-BEWC2E | 2" (50mm) Bevel Edge |
| TT-BEWC4BCE | 4pc Set (¼", ½", ¾", 1") |
| TT-BEWC6BCE | 6pc Set (¼", ⅜", ½", ¾", 1", 1¼") |



Eclipse Wood Chisels

The blades of the ECLIPSE range of wood chisels are made from one piece of chrome vanadium steel for maximum strength. The heat treated blades, which are sharpened and ready for use, can be re-sharpened up to a depth of 25mm for a longer working life.

Wood Chisels

- Resharpenable Heat treated blades for maximised safety and strength
- Soft feel ergonomic handle
- Chrome vanadium steel
- Built in striking cap



| | |
|-----------|-----------------------|
| BEWC3/8E | ⅜" (9mm) Bevel Edge |
| BEWC1/4E | ¼" (6mm) Bevel Edge |
| BEWC5/8E | ⅝" (15mm) Bevel Edge |
| BEWC3/4E | ¾" (19mm) Bevel Edge |
| BEWC1/2E | ½" (12mm) Bevel Edge |
| BEWC1E | 1" (25mm) Bevel Edge |
| BEWC11/4E | 1¼" (32mm) Bevel Edge |
| BEWC11/2E | 1½" (38mm) Bevel Edge |
| BEWC2E | 2" (50mm) Bevel Edge |

Blister Packs

- 3 piece set contains: ½", ¾" and 1" wood chisels
- 4 piece set contains: ¼", ½", ¾" and 1"
- 6 piece set contains: ¼", ⅜", ½", ¾", 1" and 1¼"



| | |
|----------|----------------|
| BEWC3BCE | Blister packed |
| BEWC4BCE | Blister packed |
| BEWC6BCE | Blister packed |



Spear & Jackson Screwdrivers

Spear & Jackson Screwdrivers

No toolkit is complete without a range of reliable screwdrivers. All **Spear & Jackson** screwdriver blades are made from chrome vanadium steel and are hardened and tempered for strength and longer life. A choice of different heads and ergonomic handle design ensures a good fit for the job and you.

Toolbox essential screwdrivers in sets of 5 and 8 of the most commonly used sizes and types of screwdriver

SD5PS - 5 Piece Screwdriver Set

- Chrome Vanadium steel blades for strength and durability
- Magnetised tips for greater convenience
- Manganese Phosphate coating for added rust protection
- Ergonomic trilobular soft feel handles for user comfort and greater torque when turning the screw
- Torques to British standard: BS 2559:1994

Set Contents:

- 75 x 3mm Slotted Parallel
- 100 x 5mm Slotted Flared
- 125 x 6mm Slotted Flared
- 100 x PH2 N°2 Phillips
- 100 x PZ2 N°2 Pozidriv



SD8PS - 8 Piece Screwdriver Set

- Chrome Vanadium steel blades for strength and durability
- Magnetised tips for greater convenience
- Manganese Phosphate coating for added rust protection
- Ergonomic trilobular soft feel handles for user comfort and greater torque when turning the screw
- Torques to British standard: BS 2559:1994

Set Contents:

- 75 x 3mm Slotted Parallel
- 100 x 5mm Slotted Flared
- 125 x 6mm Slotted Flared
- 150 x 8mm Slotted Flared
- 100 x PH1 N°1 Phillips
- 125 x PH1 N°2 Phillips
- 100 x PZ1 N°1 Pozidriv
- 125 x PZ2 N°2 Pozidriv





Spear & Jackson Screwdrivers

Spear & Jackson Screwdrivers feature bright chrome vanadium steel bars for strength and rust protection

Slotted Parallel Tip

Slotted is the most common type of screw head

- Bright chrome vanadium steel bars for strength and rust protection
- Black oxidised tip for wear resistance
- Trilobular handle with tapered neck for ergonomic fit
- Dual material handle for comfort in use
- Integral moulded finger grips around neck to allow increased torque



PA200X5: 200mm (8") 5mm, (5/16")

Slotted Flared Tip

- Bright chrome vanadium steel bars for strength and rust protection
- Black oxidised tip for wear resistance
- Trilobular handle with tapered neck for ergonomic fit
- Dual material handle for comfort in use
- Integral moulded finger grips around neck to allow increased torque



FL100X5: 100mm (4") 5mm (5/16")
FL200X8: 200mm (8") 8mm (5/8")

Phillips

Phillips tips have a positive location, reducing the danger of the screwdriver slipping.

- Bright chrome vanadium steel bars for strength and rust protection
- Black oxidised tip for wear resistance
- Trilobular handle with tapered neck for ergonomic fit
- Dual material handle for comfort in use
- Integral moulded finger grips around neck to allow increased torque



PH100X2: 100mm (4") No2
PH150X3: 150mm (6") No3

Pozidriv

Pozidriv tips reduce the risk of slippage

- Bright chrome vanadium steel bars for strength and rust protection
- Black oxidised tip for wear resistance
- Trilobular handle with tapered neck for ergonomic fit
- Dual material handle for comfort in use
- Integral moulded finger grips around neck to allow increased torque



PO2CH: Chubby 40mm (1 1/2") No2
PO75X0: 75mm (3") No0

PO75X1: 75mm (3") No1
PO100X2: 100mm (4") No2

Screwdriver sets are available, containing a selection of sizes from the range

Torx® Screwdrivers

- Chrome vanadium steel blades for strength and rust resistance
- Fluted polypropylene handles with integral finger grips for exceptionally high torque
- Torx® screws are generally used for engineering and automotive applications
- This type of screwdriver enables very high torque levels to be applied without danger of slipping



39-T10: 60mm (2 3/8") T10
39-T15: 100mm (4") T15
39-T20: 100mm (4") T20

Terminal - Extra Light Duty

- Chrome vanadium steel bars for strength and rust protection
- Fluted handles for maximum grip



P18/2-NEW: 63mm, 3mm
P18/4-NEW: 100mm, 3mm
P18/0-NEW: 63mm, No0 Phillips

SD10SET - 10 Piece Set in Zipper Wallet

- Bright chrome vanadium steel bars for strength and rust protection
- Black oxidised tip for wear resistance
- Trilobular handle with tapered neck for ergonomic fit
- Dual material handle for comfort in use
- Integral moulded finger grips around neck to allow increased torque



PA75X3 Parallel 75mm x 3mm
PA100X3 Parallel 100mm x 3mm
PA150X5 Parallel 150mm x 5mm
FL6CH Flared Chubby 45mm x 6mm
FL75X5 Flared 75mm x 5mm

FL100X6: Flared 100mm x 6mm
FL150X8: Flared 150mm x 8mm
PO2CH: Pozi Chubby 40mm x No2
PO75X1: Pozi 75mm x No1
PO100X2: Pozi 100mm x No2

SD8SET - 8 Piece Set in Zipper Wallet

- Bright chrome vanadium steel bars for strength and rust protection
- Black oxidised tip for wear resistance
- Trilobular handle with tapered neck for ergonomic fit
- Dual material handle for comfort in use
- Integral moulded finger grips around neck to allow increased torque



PA75X3: Parallel 75mm x 3mm
PA150X5: Parallel 150mm x 5mm
FL6CH: Flared Chubby 45mm x 6mm
FL75X5: Flared 75mm x 5mm

FL100X5 Flared 100mm x 5mm
PH1CH Phillips Chubby 40mm x No1
PO75X1 Pozi 75mm x No1
PO100X2 Pozi 100mm x No2



Mark, Measure and Cut Range

Essential measuring tools...

30435HD - Heavy Duty 5m Tape Measure 30440HD - Heavy Duty 8m Tape Measure

- Plastic case with impact absorbing soft feel rubber casing
- 25mm wide blade
- Class II accuracy
- Magnetic metal end hook



30432C - 2m Compact Tape Measure

- A small and concise tape measure that is ideal for work in tight spaces.
- ABS plastic case for strength and durability
- Soft TPR protective grip
- Convenient carry clip
- Free countertop merchandiser containing 16 tapes



Mark, Measure and Cut Range

The small tools are just as important as the large ones. Every successful project will need to be measured and marked out. Spear & Jackson metric and imperial tape measures, combined with spirit levels and chalk lines, are perfect for project preparation. Utility, trimming and craft knives allow for precise finer-detail cutting.



Mark, Measure and Cut Range

3m, 5m & 8m Tape Measures

- Integrated belt clip and wrist band
- Impact absorbing rubber casing offers a better grip and greater comfort
- Auto lock blade system with a push release button
- Zero point magnetic end hook for internal & external measurement
- Metric & imperial graduations
- Accuracy class II



30430: 3m (10ft) 30435: 5m (16ft) 30440: 8m (26ft)

COSMOSABS - Plastic Cosmos Chalk Line

- Durable, impact resistant ABS plastic case
- 30m double twisted poly cotton line
- Rapid 4 to 1 rewind for extra fast line storage
- Nickel steel handle (lockable in one position)
- Capacity 100gm
- Refillable



COSMOSABS*: 30M

MINIRL - Mini Road Line

- 30m line
- High capacity 200gm chamber
- Unique quick change refill facility with no spillage
- Hi-visibility yellow plastic case
- Nickel steel handle (lockable in one position)
- 2.5mm braided cotton line



MINIRL: 30M

Chalk Refills - Red or Blue Chalk Refills

- High capacity 200gm chamber
- Unique quick change refill facility with no spillage
- Hi-visibility yellow plastic case
- Refills Chalk Lines
- For use with MINIRL and COSMOSABS



CHALK224: Blue Chalk Refill, 224gm CHALK224RED: Red Chalk Refill, 224gm

CPMR & CPHG - Carpenters Pencils

- Handy tool box essentials suitable for marking up on wood and plasterboard
- Hardwood outer with a 6.5mm x 2.7mm Graphite core
- Break resistant
- Available in Medium (CPMR - Red) and Hard (CPHG - Green)
- Sold in packs of 12 pencils
- Counter-top box contains 12 packs of 12



E1770 - Eclipse Standard Utility Knife

- Standard retractable utility knife with a zinc alloy body
- Supplied with one blade



E1770: Standard Utility Knife

1702R - Eclipse Utility Blades

- Supplied in a handy dispenser which allows easy access to one blade at a time and minimises contact with the blade
- Fits E1770



1720R: Straight Blades

1702BP - Eclipse Utility Blades

- Pack of 100 spring loaded dispenser
- Fits E1770



1702BP: Straight Blades



Mark, Measure and Cut Spirit Level Range

Our range of spirit levels are all super light, but made with very strong aluminium. Along with crystal clear vials, mean that getting the straight line will be accurate. Spear & Jackson spirit levels range from 100mm to 2,000mm

SL100 - 100mm Pocket Level

- Fits easily in the pocket
- Aluminum alloy body
- Shock proof end caps
- The most accurate 100mm level in the market
- Comes in a handy counter top box of 8



SL600 - 600mm Spirit Level

- Light but strong aluminium body
- 3 vials - horizontal, vertical and 45 degrees
- 0.5mm/m accuracy
- Non-slip, soft feel hand grips
- Double milled base with 'v' groove to help balance on pipes
- Top edge viewing window to read vertical vial from front elevation



SL900 - 900mm Spirit Level

- Light but strong aluminium body
- 3 vials - horizontal, vertical and 45 degrees
- 0.5mm/m accuracy
- Non-slip, soft feel hand grips
- Double milled base with 'v' groove to help balance on pipes
- Top edge viewing window to read vertical vial from front elevation



SL1200 - 1200mm Spirit Level

- Light but strong aluminium body
- 3 vials - horizontal, vertical and 45 degrees
- 0.5mm/m accuracy
- Non-slip, soft feel hand grips
- Double milled base with 'v' groove to help balance on pipes
- Top edge viewing window to read vertical vial from front elevation



SL2000 - 2000mm Spirit Level

- Light but strong aluminium body
- 3 vials - horizontal, vertical and 45 degrees
- 0.5mm/m accuracy
- Non-slip, soft feel hand grips
- Double milled base with 'v' groove to help balance on pipes
- Top edge viewing window to read vertical vial from front elevation



SLIBEAM1200* - 1200mm I Beam Section Spirit Level

- Light but strong aluminium body
- 3 vials - horizontal, vertical and 45 degrees
- 1mm/m accuracy
- I Beam section for easy grip
- Shock absorbing end caps



SL230 - 230mm Pocket Level

- Compact Design
- Light but strong aluminium body
- 2 vials - horizontal and vertical
- 0.5mm/m accuracy
- Double milled magnetic base



SL3PS - 3 Piece Spirit Level Set in bespoke shoulder bag

Set Contains: 1 x 1200mm, 600mm and 230mm Spirit Levels

- Light but strong aluminium body
- 0.5mm/m accuracy
- Shoulder bag





Contractors' Tools Range

No one demands more from their tools than the professionals who work in environments where performance is a must. At **Spear & Jackson**, we have been supplying contractors with reliable, professional-quality hand and groundwork tools for over 250 years.

Contractors' Tools Range

A range of contractor tools as tough as Britain's contractors

Britain's contractors choose Spear & Jackson because they know the tools can be trusted to give outstanding performance in rigorous onsite conditions, day after day, year after year.

This isn't just because our professional tools are designed to the very highest international quality **BS EN ISO 9001:2000** standards - it's also because our products are developed through unique insights into what the trade really needs. We've done extensive research to make sure our specialist tools look, feel and work right every time.

So, when a tradesman reaches for a Spear & Jackson tool, they know it's a tool they can trust.

No wonder that thousands of contractors, ground workers, Local Authorities and National Utilities around the UK rely on Spear & Jackson professional hand and groundwork tools to get the job done. Your customers demand the best, offer them the best - Spear & Jackson.

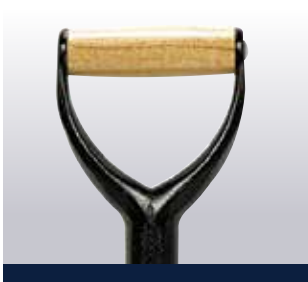




Contractors' Tools Specifications

Handle Types

Metal MYD



Fixed with waterproof adhesive and steel pins to withstand *47Nm2 torque

Polypropylene PYD



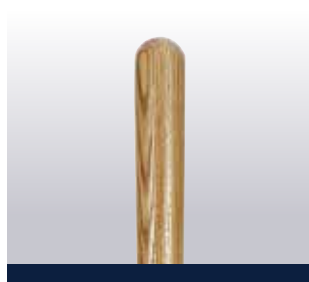
UV stabilised to UK climate conditions

Crutch T



Fixed with waterproof adhesive and a wooden peg to withstand 47Nm2 torque

Long Knob



Contoured shaft available in 48" and 54" lengths. Lacquered for weatherproofing

Newton Metre Pressures (Nm²)*

The ability to withstand an applied pressure before the seal between the surfaces is broken, causing rotation.

Shaft Types

Strapped



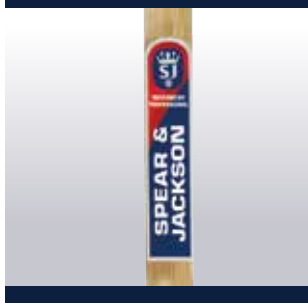
Strapped and double riveted for power and extra strength

Tubular



Unique streamlined shaft, contoured to fit the hand. Rotary welded to ensure perfect alignment of weld

Wood



Hardwood shaft for maximum strength and comfort in use

Fibrelite



Shorter socket length making it easier to avoid touching metal whilst in use to increase safety

Insulated



Polyfibre shaft with D grip handle. Two layers of insulating material. When white material shows through the tool needs replacing



Head Types - Some ranges feature treaded heads for more comfortable digging

Square Mouth



5 sizes: 000, 0, 2, 4 & 6. General purpose contractors' shovel for shovelling out and refilling trenches, mixing concrete and moving tarmac.

Taper Mouth



General purpose tapered blade shovel, traditionally popular in the Midlands. For shoveling tarmac, mixing concrete and clearing and refilling trenches.

Round Mouth



Ideal for shoveling gravel and other loose materials. The pointed blade gives easier ground penetration.

Trenching



A general trenching shovel ideal for narrow work such as pipe and cable laying.

Newcastle Draining



14" or 16". Long narrow blade makes it perfect for extending trenches in terms of width and particularly depth. Lugs provide greater foot hold.

Draining Tool



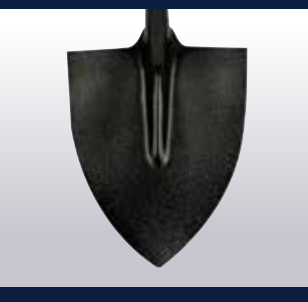
A long narrow blade makes this tool ideal for digging trenches in terms of width and depth. Useful for digging cable, pipe and drain channels.

General Service



Treaded general purpose shovel, traditionally popular in Scotland.

West Country



Long handled shovel with hardened and tempered head to enable use as a digging tool. Originally designed for the West Country and Wales

Cable Laying



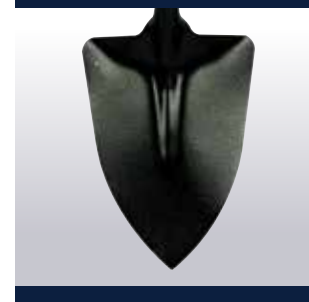
Specially designed for digging trenches for cables. Generally used in conjunction with the trenching shovel.

Grafting



Specially designed for clay digging or heavy work (grafting). With dished blade and rounded point suitable for removal of heavy materials.

Irish Round



Long handled general purpose shovel with a hardened and tempered head for use as a digging tool. Originally designed for use in Ireland.

Trenching Fork



Heavy duty contractors or trenching fork. Extra strong square prongs with chisel points make it ideal for heavy clay or stony ground. Lightweight version also available.

Our Shovel ranges are tested to exceed British Standards



Open Socket Shovels

A traditional style and a popular range. Used for general-purpose work, an open socket shovel is the ideal tool for scooping and shifting loose material such as sand or gravel. The solid hardwood shaft offers a natural, comfortable grip with a responsive lightweight feel.

Contractors' Tools Open Socket Shovels

A variety of handle and head types are available to suit individual preferences

**Hardwood Ash
Shaft for strength
and comfort**

**Aluminium rivet
secures the handle
in the socket and
provides maximum
stability**

**High quality
carbon steel for
a longer life**

**All easily exceed
BS3388 load test**

**Clear polyester powder
coat varnish protects
against rusting**

**Rounded corners
reduce risk of
damage to pipes
and cables**





Contractors' Tools

Open Socket Shovels

A variety of handle and head types are available to suit individual preferences

2521NC - Square Mouth No. 6

- Handle Type: Crutch T
- Blade Size: 370mm (14½") x 305mm (12")
- Handle Length: 711mm (28")



2521AU - Square Mouth No. 2

- Handle Type: Crutch T
- Blade Size: 302mm (12") x 250mm (10")
- Handle Length: 711mm (28")



2521UA - Square Mouth No. 2

- Handle Type: PYD
- Blade Size: 302mm (12") x 250mm (10")
- Handle Length: 711mm (28")



2521HT - Square Mouth No. 4

- Handle Type: Crutch T
- Blade Size: 345mm (13½") x 280mm (11")
- Handle Length: 711mm (28")



2521VC - Square Mouth No. 4

- Handle Type: PYD
- Blade Size: 345mm (13½") x 280mm (11")
- Handle Length: 711mm (28")



2521WE - Square Mouth No. 6

- Handle Type: PYD
- Blade Size: 370mm (14½") x 305mm (12")
- Handle Length: 711mm (28")



2531UH - Square Mouth No. 2

- Handle Type: Long Knob
- Blade Size: 302mm (12") x 250mm (10")
- Handle Length: 1220mm (48")



2530BW - West Country 54"

- Handle Type: Long Knob
- Blade Size: 305mm (12") x 255mm (10")
- Handle Length: 1372mm (54")



2540HU - Irish Round 54"

- Handle Type: Long Knob
- Blade Size: 355mm (14") x 240mm (9½")
- Handle Length: 1372mm (54")



IRISHDS - Irish Digging Shovel

- Handle Type: Parallel
- Blade Size: 330mm (13") x 240mm (9½")
- Handle Length: 1200mm (47")

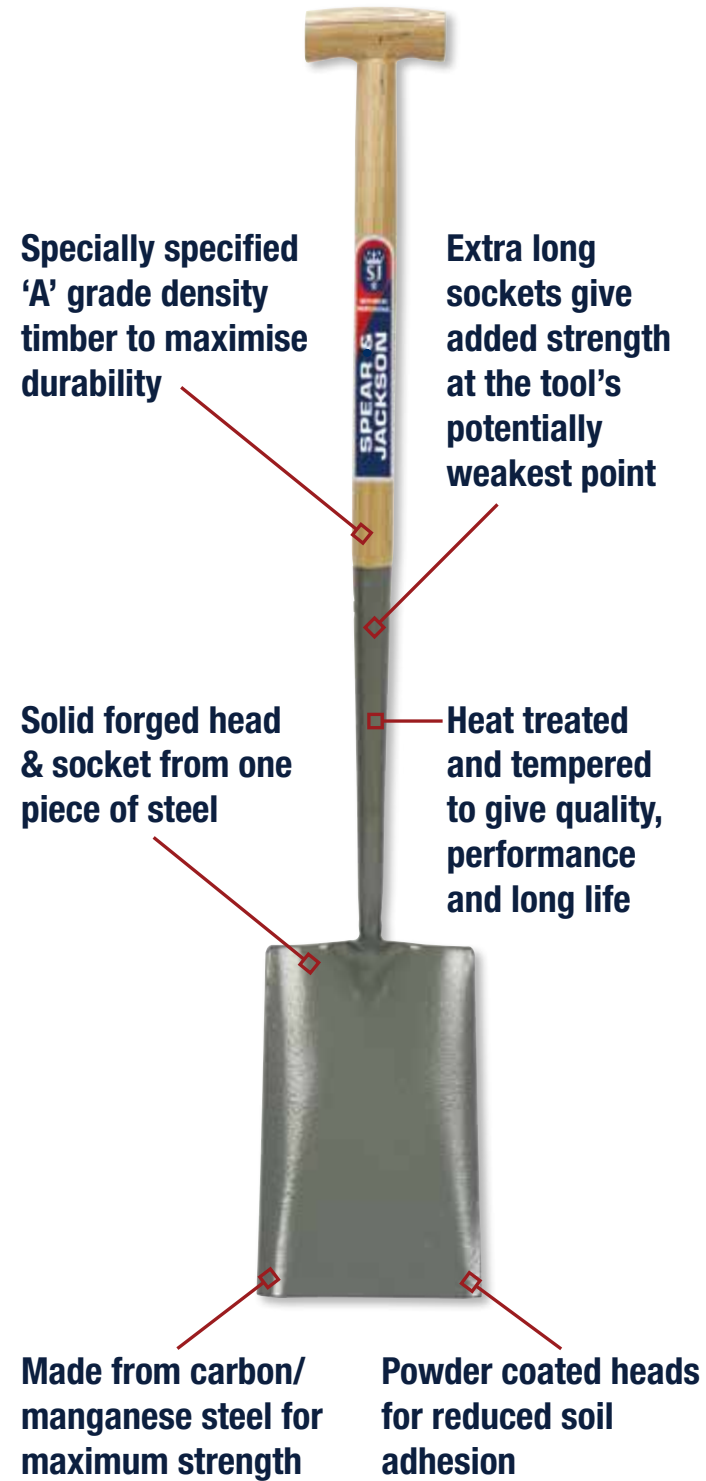




Contractors' Tools

Solid Socket Shovels

All easily exceed BS3388 load test



Trials using this timber produce an average 138kg breaking strain which is over double the requirement of BS3388 (BS3388 - British Standard covering the manufacture of Spades, Forks & Shovels)

1307HDS - Heavy Duty Spade

- Handle Type: Metal MYD
- Socket Size: 305mm (12")
- Blade Size: 305mm (12¼") x 200mm (8")
- Handle Length: 711mm (28")



1047MY - Rabbeting Spade

- Handle Type: Metal MYD
- Socket Size: 320mm (12½")
- Blade Size: 276mm (11") x 133mm (5⅛")
- Handle Length: 711mm (28")



2050AV - Round Mouth Shovel

- Handle Type: PYD
- Socket Size: 305mm (12")
- Blade Size: 305mm (12¼") x 240mm (9½")
- Handle Length: 705mm (27½")



2061TP - Square Mouth No. 000

- Handle Type: Crutch T
- Socket Size: 305mm (12")
- Blade Size: 265mm (10½") x 205mm (8")
- Handle Length: 711mm (28")
- Overall length: 950mm (37½")



2029AV - Square Mouth No. 2

- Handle Type: Crutch T
- Socket Size: 305mm (12")
- Blade Size: 302mm (12") x 250mm (10")
- Handle Length: 711mm (28")



2029RW - Square Mouth No. 2

- Handle Type: Metal MYD
- Socket Size: 305mm (12")
- Blade Size: 320mm (12") x 250mm (10")
- Handle Length: 711mm (28")



2061LH* - Square Mouth Shovel

- Handle Type: Crutch T
- Socket Size: 305mm (12")
- Blade Size: 265mm (10½") x 205mm (8")
- Extra Long Handle
- Handle Length: 915mm (36")
- Overall length: 1170mm (46")



2028AZ - Taper Mouth No. 2

- Handle Type: Crutch T
- Socket Size: 305mm (12")
- Blade Size: 315mm (12½") x 218mm (8¾")
- Handle Length: 711mm (28")



2028RS - Taper Mouth No. 2

- Handle Type: Metal MYD
- Socket Size: 305mm (12")
- Blade Size: 315mm (12½") x 218mm (8¾")
- Handle Length: 711mm (28")





Contractors' Tools

Tubular Steel Shovels

A tough, reliable no nonsense range of professional shovels, designed to give great performance in all conditions

Made from carbon / manganese steel for maximum performance. Heat treated and tempered to give quality, performance and long life

Solid forged head and socket from one piece of steel

Unique streamlined shaft contoured to comfortably fit the hand

Automatically rotary welded to ensure perfect alignment of weld for maximum strength

Powder coated heads for reduced soil adhesion



All easily exceed BS3388 load test

2000AC - Taper Mouth No. 2

- Handle Type: Metal MYD
- Blade Size: 318mm (12½") x 222mm (8¾")
- Handle Length: 711mm (28")



2002AR - Square Mouth No. 2

- Handle Type: Metal MYD
- Blade Size: 302mm (12") x 250mm (10")
- Handle Length: 711mm (28")



2131GZ - Grafting Spade

- Handle Type: Metal MYD
- Blade Size: 320mm (13") x 165mm (6½")
- Handle Length: 711mm (28")



2001AD - Round Mouth No. 2

- Handle Type: Metal MYD
- Socket Size: 305mm (12")
- Blade Size: 305mm (12") x 240mm (9½")
- Handle Length: 711mm (28")





Contractors' Tools

Tubular Steel Shovels and Forks

The unique method of manufacture ensures a strong, comfortable tool that's lightweight and easy to use

2006AP - Trenching Shovel

- Handle Type: Metal MYD
- Blade Size: 276mm (11") x 172mm (7")
- Handle Length: 711mm (28")



2007AP - Cable Laying Shovel

- Handle Type: Metal MYD
- Blade Size: 276mm (11") x 119mm (4 3/4")
- Handle Length: 711mm (28")



2154PY - Draining Shovel 16"

- Handle Type: Metal PYD
- Blade Size: 402mm (16") x 138mm (5 1/2") Tapering down to 106mm (4")



2153AE - Newcastle 16" Shovel

- Handle Type: Metal MYD
- Blade Size: 405mm (16") x 105mm (4")
- Handle Length: 711mm (28")



2154HK - Draining Shovel 16"

- Handle Type: Metal MYD
- Blade Size: 405mm (16") x 105mm (4")
- Handle Length: 711mm (28")



1700AV - Tubular Fork

- Handle Type: Metal MYD
- Head Size: 325mm (13") x 215mm (8 1/2")
- Handle Length: 760mm (30")



1710AW - Tubular Lightweight Fork

- Handle Type: Metal MYD
- Head Size: 325mm (13") x 210mm (8 1/4")
- Handle Length: 760mm (30")





Contractors' Tools

Strapped Tools

Combines the extra strength of steel strapping with the comfort of a shaft such as ash

2136NM - General Service Treaded

- Handle Type: Crutch T
- Blade Size: 255mm (10") x 205mm (8")
- Strap Size: 255mm (10")
- Handle Length: 711mm (28")
- 2 Rivets



1072AY - Irish Spade

- Handle Type: Crutch T
- Blade Size: 330mm (13") x 165mm (6½") x 140mm (5½")
- Strap Size: 255mm (10")
- Handle Length: 762mm (36")
- 3 Rivets



All easily exceed
BS3388 load test



Contractors' Tools

Fibrelite Range

Fibrelite Range

A range of lightweight professional shovels designed to reduce the risk of personal injury when working near live cables

The Fibrelite shaft is not only lightweight and extremely strong, but also fire and water resistant. The shorter socket length minimises the risk of touching metal whilst in use, thereby increasing safety

One piece head and socket forged from manganese steel for maximum strength

Round bar treaded heads for more comfortable digging

Heat treated and tempered to give quality, performance and long life

Rounded corners reduce the risk of damage to pipes and cables

All easily exceed BS3388 load test

The Fibrelite shaft is lightweight, durable and extremely strong

2731TFL - Square Mouth

- Handle Type: Metal MYD
- Socket Size: 190mm (7½")
- Blade Size: 302mm (12") x 250mm (10")
- Handle Length: 711mm (28")



2701TFL - Trenching Shovel

- Handle Type: Metal MYD
- Socket Size: 190mm (7½")
- Blade Size: 276mm (11") x 172mm (7")
- Handle Length: 711mm (28")



2702TFL - Taper Mouth

- Handle Type: Metal MYD
- Socket Size: 190mm (7½")
- Blade Size: 315mm (12½") x 218mm (8¾")
- Handle Length: 711mm (28")



2711TFL - Cable Layer

- Handle Type: Metal MYD
- Socket Size: 190mm (7½")
- Blade Size: 276mm (11") x 119mm (4¾")
- Handle Length: 711mm (28")



2753TFL - Newcastle Drainer

- Handle Type: Metal MYD
- Socket Size: 190mm (7½")
- Blade Size: 405mm (16 1/4") x 105mm (4")
- Handle Length: 711mm (28")





Contractors' Tools

Insulated Range

Insulated Range

A comprehensive range of high quality insulated shovels for working on, or near live cables



All of the Spear & Jackson range of Neverbend Insulated tools are manufactured and supplied in accordance with British Standard number BS8020:2011

2029PF/INS12 - Square Mouth No. 2

- Handle Type: YD Insulated
- Blade Size: 302mm (12") x 250mm (10")
- Handle Length: 733mm (28⁷/₈")



2028PF/INS12 - Taper Mouth

- Handle Type: YD Insulated
- Blade Size: 315mm (12¹/₂") x 218mm (8³/₄")
- Handle Length: 733mm (28⁷/₈")



2030PF/INS12 - Round Mouth

- Handle Type: YD Insulated
- Blade Size: 305mm (12¹/₄") x 240mm (9¹/₂")
- Handle Length: 733mm (28⁷/₈")



All of the Spear & Jackson range of Neverbend Insulated tools are manufactured and supplied in accordance with British Standard number BS8020:2011.

This exacting standard was introduced to ensure the best possible protection from potential harm when working in close proximity to live conductor cables. To comply with this standard we need to demonstrate full conformity to exacting detailed manufacturing and testing procedures:

- Insulation is provided by two layers of polypropylene sheathing
- The inner white sheath consists of an environmentally friendly, flexible, flame retardant polypropylene
- The orange outer sheath (also referred to as the abrasive guard) has excellent high voltage protection, is environment sealed and resistant to impact and abrasion
- Our shovels and contractors fork also incorporate the added safety feature of an integrated collar / hand stop designed to minimise the risk of the user's hand slipping on to the metal component of the tools
- When the outer orange sheath abrades to the extent that the inner white sleeve is visible, the tool should be removed from use around live working conditions

The product is considered to comply with the British Standard only if no electric breakdown occurred and the leakage current did not exceed 1mA specified. Each tool is marked with the BS8020:2011 mark, a unique reference number for traceability and is certified, guaranteeing full conformity to live-working specifications.

- Rated working voltages at 1,000 Volts A.C. and 1,500 Volts D.C.
- Tested to 10 Kva. Issued with a Certificate of Conformity



Contractors' Tools

Insulated Range

The orange outer sheath (also referred to as the abrasive guard) has excellent high voltage protection, is environment sealed and resistant to impact and abrasion

2026PF/INS12 - Trenching Shovel

- Handle Type: YD Insulated
- Blade Size: 276mm (11") x 172mm (7")
- Handle Length: 733mm (28⁷/₈")



2027PF/INS12 - Cable Laying

- Handle Type: YD Insulated
- Blade Size: 276mm (11") x 119mm (4³/₄")
- Handle Length: 733mm (28⁷/₈")



2861PF/INS12 - Grafting Spade

- Handle Type: YD Insulated
- Blade Size: 320mm (12⁵/₈") x 160mm (6¹/₄")
- Handle Length: 733mm (28⁷/₈")



2036PF/INS12 - General Service

- Handle Type: YD Insulated
- Blade Size: 240mm (9¹/₂") x 195mm (7³/₄")
- Handle Length: 733mm (28⁷/₈")



1180PF/INS12 - Digging Spade

- Handle Type: YD Insulated
- Head Size: 289mm (11³/₈") x 190mm (7¹/₂")
- Handle Length: 733mm (28⁷/₈")



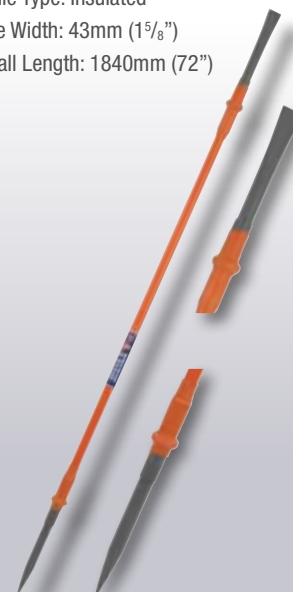
2159PF/INS12 - Newcastle Drainer

- Handle Type: YD Insulated
- Blade Size: 405mm (16¹/₄") x 105mm (4")
- Handle Length: 733mm (28⁷/₈")



CBCP114/INS - Crowbar Chisel & Point

- Handle Type: Insulated
- Blade Width: 43mm (1⁵/₈")
- Overall Length: 1840mm (72")



DSH/INS - Double Shovel Holer

- Handle Type: Insulated
- Handles: 32mm (1¹/₄") Dia
- Blade Length: 355mm (14")
- Max Open Width: 370mm (14¹/₂")
- Overall Length: 1710mm (67¹/₄")
- Weight: 7.7kgs



2PF/INS12 - 2 Prong Fork*

- Handle Type: YD Insulated
- Head Size: 195mm (7³/₄") x 76mm (3")
- Handle Length: 730mm (28³/₄")
- Ideal for use in confined spaces, minimises potential cable damage



*Load test not applicable



Contractors' Tools

Insulated Range

Each tool is marked with the BS8020:2011 mark, guaranteeing full conformity to live-working specifications

RAM10LB/INS - 10lb Rammer

- Handle Type: Insulated
- Head Size: 130mm (5") x 130mm (5")
- Overall Length: 1235mm (48½")
- Weight: 10lb



DSH160FG/INS - 10lb Sledge Hammer

- Handle Type: Insulated
- Head Size: 178mm (7") x 64mm (2½")
- Overall Length: 850mm (33")
- Integrated hand stop to help prevent the hand slipping onto the metal head
- Strong Polyfibre shaft has excellent insulating and shock properties



DSH224FG/INS - 14lb Sledge Hammer

- Handle Type: Insulated
- Head Size: 193mm (7½") x 68mm (2⅝")
- Overall Length: 850mm (33")
- Integrated hand stop to help prevent the hand slipping onto the metal head
- Strong Polyfibre shaft has excellent insulating and shock properties



5000/INS - 7lb Pick Chisel & Point

- Handle Type: Insulated
- Head Size: 158mm (6") x 54mm (2")
- Overall Length: 910mm (36")
- Integrated hand stop to help prevent the hand slipping onto the metal head
- Strong Polyfibre shaft has excellent insulating and shock properties



5020/INS - Pick Handle

- Handle Type: Insulated
- Overall Length: 910mm (36")



Contractors' Tools

Tarmac and Asphalt Tools

Tools designed for working with tarmac and asphalt. Rakes are available with flat or round teeth

3886AA - Asphalt Rake

- Handle Type: Wood
- Head Size: 90mm (3½") x 380mm (15")
- Handle Length: 1750mm (69")
- No of Teeth: 16 Flat



3886BC - Asphalt Rake

- Handle Type: Tubular
- Head Size: 90mm (3½") x 380mm (15")
- Handle Length: 1750mm (69")
- No of Teeth: 16 Flat



3887AE - Tarmac Rake

- Handle Type: Wood
- Head Size: 90mm (3½") x 380mm (15")
- Handle Length: 1750mm (69")
- No of Teeth: 16 Round



3887AD - Tarmac Rake

- Handle Type: Tubular
- Head Size: 90mm (3½") x 380mm (15")
- Handle Length: 1750mm (69")
- No of Teeth: w16 Round



5005AX - 10lb Square Tamper

- Weight: 4.5kg (10lbs)
- Handle Length: 1345mm (53")
- Head Size: 125mm (5") square
- Drop forged steel head
- Tubular steel handle
- Non-slip rubber grip



3888AS - Aluminium Spazzle

For smoothing and levelling materials including asphalt, tarmac, concrete and soil

- Lightweight but strong aluminium blade 605mm (24") wide
- Head bracket for extra strength and rigidity
- Long wooden handle for optimum reach 1580mm (62")



3889WS* - Wooden Spazzle

For smoothing and levelling materials including asphalt, tarmac, concrete and soil

- Solid hard wood blade 605mm (24") wide
- Head bracket for extra strength and rigidity
- Long wooden handle for optimum reach 1580mm (62")
- Spare blade available (3889WSBLADE)





Contractors' Tools

Contractor and Landscaping Tools

From picks and scrapers to post hole diggers, we've got it all!

3420BC*, 3421AW* -
Floor Scraper

- Handle Type: Tubular
- Blade Size: 75mm (3") x 205mm (8")
- Handle Length: 1220mm (48")

* 3421AW - Spare blade only

3422HD7 -
Heavy Duty Scraper 7"

- Handle Type: Wood
- Blade Size: 175mm (7") x 360mm (14")
- Overall Length: 1250mm (50")

3422HD4 -
Heavy Duty Scraper 4"

- Handle Type: Wood
- Blade Size: 100mm (4") x 360mm (14")
- Handle Length: 1250mm (50")

MALLET 24 -
24oz Rubber Mallet

- Handle Length: 275mm (10¾")
- Head Size: 110mm (4¼") x 63mm (2½")
- High grade rubber head
- Handle & head available separately

RMAUL -
Rubber Maul

- Handle Length: 1066mm (42")
- Head Size: 329mm (13") x 129mm (5")
- High grade rubber head
- Extra long handle
- Handle & head available separately

RMAUL
RMAUL-HD (head only)
RMAUL-HANDLE

5002AE -
Grubbing Mattock

- Weight: 2.3kg (5lbs)
- Heat treated carbon steel
- For use with 5020AP or 5020/ins
- Ideal for breaking up heavy ground

A range of tools for creating holes for fencing and cables and tamping down

5000BT -
Navy Pick Chisel and Point

- Weight: 3.2kg (7lbs)
- Heat treated carbon steel
- For use with 5020AP or 5020/ins

5020AP -
Hardwood Pick Handle

- Length: 910mm (36")
- Hardwood for use with 5000BT and 5002AE

FB72 -
Fencing Bar

- Diameter: 25mm (1")
- Length: 1830mm (72")
- Blade Width: 65mm (2½")

CBCP114 -
(1¼") Chisel and Point Crowbar

- Length: 1540mm (60")
- Bar Width: 28mm (1⅛")
- Chisel Width: 31mm (1¼")
- Hardened and tempered to BS standards

FG-HD54 -
Cable Grafter

- Handle Type: Tubular steel
- Blade Size: 100mm (4") x 360mm (14")
- Handle Length: 1620mm (63")

5004AX -
10lb Square Rammer

- Weight: 4.5kg (10lbs)
- Handle Length: 1372mm (54")
- Head Size: 125mm (5") square
- Forged steel head
- Ash handle



Landscaping and Contractors tools, including rakes, and tools for digging post holes and micro shovels for small scale digging

PHD-WH (Wood) - Post Hole Digger

- Handle Length: 1470mm
- Head Length: 245mm (9½")
- Blade Size: 230mm (9") x 120mm (4")
- Max open width: 140mm (5½")
- Hardened carbon steel blades
- Wooden handle



DSH/TH (Tubular) - Double Shovel Holer

- Handle Length: 1725mm (68")
- Blade Size: 355mm (14") x 220mm (8½")
- Max open width: 280mm (11")
- Hardened and tempered carbon steel blades
- Tubular steel handles



3872HD - 48" Heavy Duty Lawn Rake

- Heat treated tines are designed to withstand the toughest use whilst maintaining their shape and flexibility
- The rake's 20 tines wrap around the rivets at the back of the plate to reduce the likelihood of them becoming detached during use
- Weatherproofed hardwood shaft for greater durability
- Handle Type: Wood
- Handle Length: 48"
- Head Size: 203mm (8")
- No of Teeth: 20



Contractors' Tools
Contractor and Landscaping Tools

PHAUG - Post Hole Auger

- Weight: 4kg (8.5lbs)
- Length: 1105mm (43½")
- Depth: 230mm (9")
- Width: 155mm (6")
- Hardwood 'T' handle
- Steel shaft and corkscrew blade
- Hardened tip



PHR5 - Post Rammer

- Weight: 14.4kg (31.7lbs)
- Length: 700mm
- Overall Width: 360mm (14")
- Diameter: 165mm (6")
- Solid metal end cap
- 530mm (20⅞") long steel handles



8208ST* - Landscaping Rake

- Handle Type: Wood
- Head Size: 630mm (24½")
- Overall Length: 1555mm (61")
- Tooth Length: 118mm 4⅝")
- No of Teeth: 18



8206AH - Alloy Rake

- Handle Type: Wood
- Head Size: 700mm (27½")
- Handle Length: 1778mm (70")
- Tooth Length: 85mm (3⅜")
- No of Teeth: 18



MICROSQUARE - Micro Shovel Square

- Overall Length: 710mm (28")
- Blade Size: 210mm (8¼") x 160mm (6¼")
- High quality carbon steel head for longer life
- Clear polyester powder coat varnish helps protect against rusting
- Treaded blade
- Tough fibreglass shaft
- Soft feel ergonomic hilt



MICROROUND - Micro Shovel Round

- Overall Length: 695mm (27½")
- Blade Size: 210mm (8¼") x 150mm (6")
- High quality carbon steel head for longer life
- Clear polyester powder coat varnish helps protect against rusting
- Treaded blade
- Tough fibreglass shaft
- Soft feel ergonomic hilt





Spear & Jackson

Terms and Conditions

Conditions of Sale (For orders within the United Kingdom and Overseas)
In these conditions 'The Seller' means Neill Tools Limited being the Company by whom these goods are sold.

1. GENERAL

(a) The Seller's quotations are not binding on the Seller and a contract ('the contract') will only come into being: (i) in the case of orders to be delivered within the United Kingdom, upon acceptance by the Seller of the Customer's order; or (ii) in the case of orders to be delivered outside the United Kingdom, upon whichever shall be the later of acceptance in writing by the Seller of the Customer's order or notification to the Seller that any letter of Credit (which the Seller may have requested prior to written acceptance of the order) has been opened and that any necessary export or import licence or exchange permit has been granted and the following conditions shall be deemed to be incorporated therein. (b) The Contract will be subject to these conditions. All terms and conditions appearing or referred to in the Customer's order or otherwise stipulated by the Customer shall have no effect. Any variation of the contract must be confirmed in writing by the Seller.

2. PRICES

(a) Where the goods are sold by reference to the Seller's published price list the price payable for the goods shall be the ruling price as published in the price list current at the date of despatch of the goods from the Seller's premises (in the case of orders to be delivered within the United Kingdom) or in the price list current at the date of written acknowledgment of the Customer's order by the Seller (in the case of orders to be delivered outside the United Kingdom). (b) In other cases the price stated in the contract is based on the cost to the Seller of raw materials, fuel and power, transport and labour and all other costs at the date of acceptance of the order or quotation (whichever is earlier). If at the date of despatch of the goods from the Seller's premises there has been any increase in all or any of such costs the price payable for (the goods may at the request of the Seller be increased accordingly. (c) Where the price for the goods is varied in accordance with this condition the price as varied shall be binding on both parties and shall not give either party any option of cancellation. (d) Unless specifically agreed otherwise there shall be added to the price for the goods any value added tax and any other tax or duty relating to the manufacture, transportation, export, import sale or delivery of the goods (whether initially charged on or payable by the Seller to the Customer). The price for the goods includes delivery to the Customer's works or in the case of orders from outside the United Kingdom the price includes delivery F.O.B. UK port. Where expedited delivery is required by the Customer, the extra cost for the expedition of the delivery shall be borne by the Customer and added to the price for the goods. (e) Quotations in a currency other than Sterling are based on the rate of exchange fixed by the Seller at the time of acknowledging in writing the Customer's order and unless otherwise stated the price may be subject to revision by the Seller up or down if any different rate of exchange is ruling at the date of invoice

3. TERMS OF PAYMENT

Prices quoted are net and are in Sterling unless otherwise agreed Subject to credit being approved accounts are due for payment not later than the end of the month following the month of invoice otherwise payment must be received by the Seller before delivery. When deliveries are spread over a period each consignment will be invoiced as dispatched and each month's invoices will be treated as a separate account and be payable accordingly. Failure to pay for any goods or for any delivery or instalment shall entitle the Seller to suspend further deliveries and work both on the same order and on any other order from the Customer without prejudice to any other right the Seller may have. The Seller also reserves the right to charge interest on overdue accounts at the rate of 2% per month. The Seller reserves the right where genuine doubts arise as to a Customer's financial position or in the case of failure to pay for any goods or any delivery or instalment as aforesaid to suspend delivery of any order or any part or instalment without liability until payment or satisfactory security for payment has been provided. Where goods are to be delivered outside the United Kingdom payment must be made against delivery of the goods or shipping documents F.O.B. UK Port unless credit arrangements within the United Kingdom approved by the Seller have been made.

4. TITLE TO GOODS

(a) Legal and beneficial ownership of goods shall remain with the Seller until payment in full has been received by the Seller. (i) for those goods (ii) for any other goods supplied by the Seller (iii) of any other monies due from the Customer to the Seller on any account. (b) Until property in the goods passes to the Customer under paragraph (a) above the Customer Shall: (i) be bailee of the goods (ii) keep the goods separately and readily identifiable as the property of the Seller (c) (i) Notwithstanding paragraph (a) above the Customer may (as between it and its customer only) as principal in the ordinary course of its business sell the goods by bonafide sale at full market value or in the ordinary course of its business use the goods. (ii) Goods shall be deemed sold or used in the order delivered to the Customer. (iii) Without prejudice to (c)(ii) above, any resale by the Customer of goods in which property has not passed to the customer shall (as between the Seller and the Customer) be made by the Customer as agent for the Seller. (d) (i) If goods in which property has not passed to the Customer are mixed with or incorporated into other goods the property in those other goods shall be held on trust by the Customer for the Seller to the full extent of the sums recoverable by the Seller under paragraph (a) above. (ii) The proceeds of sale of any goods and any other goods referred to in paragraph (d)(i) above shall be held by the Customer in trust for the Seller to the extent of all sums recoverable by the Seller under paragraph (a) above. (iii) The Customer shall keep any proceeds of sale as referred to in paragraph (d) (ii) above in a separate account and the Seller shall have the right to trace such proceeds. (iv) Upon accounting to the Seller for the entire proceeds of sales made under paragraphs (c)(iii) and (d)(i) above the Customer will pay to the Seller a commission equivalent to the difference between the sums owed to the Seller and the value of such proceeds. (e) The Customer assigns to he Seller all rights and claims the Customer may have against it own customers and others in respect of goods specified in paragraphs (c) (i) and (d)(i) above. (f) At any time prior to property in goods passing to the Customer (whether or not any payment to the Seller is then overdue or the Customer's otherwise in breach of any obligation to the Seller) the Seller may without prejudice or any other of its rights: (i) retake possession of all or any part of the goods and enter any premises for that purpose (or authorise others to do so) which the Customer hereby authorises (ii) require delivery up to it of all or any part of the goods (iii) terminate the Customer's authority to resell or use the goods forthwith by written notice to the Customer which authority shall automatically terminate (without notice) upon any insolvency of the Customer or it going into liquidation (as defined in the insolvency Act 1986) or it having a receiver or administrative receiver appointed or it becoming subject to an administration order or calling a meeting of its creditors or any execution or distress being levied on goods in its possession. (g) The Seller may at any time appropriate sums received from the Customer as it thinks fit notwithstanding any purported appropriation of the Customer. (h) Each paragraph and sub-paragraph of this clause is separate severable and distinct.

5. WARRANTY - LIMIT OF RESPONSIBILITY;

(a) The Seller warrants that it will (at the Seller's choice) either repair or replace or refund the full purchase price of any goods which are found in relation to the supply of goods within a period of 12 months from despatch of such goods from the Seller's premises (the warranty period) to be defective or not in accordance with the contract or any express description or representation given or made by or on behalf of the Seller in respect of the goods save that this warranty shall not apply where the defect or fault is attributable to defective materials supplied by third parties where the Customer's only remedy will be against that third party. The Customer's remedies in respect of any claim under the foregoing express warranty or any condition or warranty implied by law or any other claim in respect of the goods or any workmanship in relation thereto (whether or not involving negligence on the part of the Seller) shall in all cases be limited to repair, replacement or refund of the purchase price as aforesaid and any condition or warranty implied by law shall cease to apply after the expiry of the warranty period; and the Seller shall not in any circumstances be liable for any damages, compensation, costs, expenses, losses or other liabilities, whether direct or consequential, and any other remedy which would otherwise be available in law is hereby excluded except to the extent that such exclusion is prohibited by any rule of law. A claim in respect of any defect or failure to comply with the specification or in respect of any delivery or instalment of any

order or any part thereof shall not entitle the Customer to cancel or refuse delivery of or payment for any other order, delivery or instalment or any part of the same order, delivery or instalment. (b) Any guarantee or warranty expressly given to the end-user of any product made by the Seller is expressly excluded from these conditions and shall not be for the benefit of the Customer.

6. DELIVERY AND COMPLETION DATES

(a) The delivery dates specified in the contract are approximate only and unless otherwise expressly stated, time is not of the essence for delivery. The Seller will not be liable in any circumstances for the consequences of any delay in delivery or failure to deliver. (b) No delay shall entitle the Customer to reject any delivery or any further instalment or part of the order or any other order from the Customer or to repudiate the contract or the order.

7. DAMAGE - SHORTAGE OR LOSS IN TRANSIT

(a) In the case of sales to Customers within the United Kingdom risk in the goods passes on despatch from the Seller's works and the Seller accepts no responsibility for any damage or loss in transit. Where relevant claims for damage or loss in transit should be made on any carrier employed by the Seller and any conditions imposed by such carrier in relation to claims for damage or loss in transit should be complied with. (b) In the case of sales to Customers outside the United Kingdom risk passes at the point specified in the contract and the Seller will entertain a claim by the Customer in respect of loss or damage in transit only if the Customer: (i) gives written notice to the Seller within 21 days of non-delivery or within 7 days of the delivery in any other case and; (ii) where the goods are transported by an independent freight carrier, complies in all respects with the freight carrier's conditions of carriage for notifying claims for loss or damage in transit.

8. DELAYED ACCEPTANCE

If for any reason the Customer is unable to accept delivery of the goods when the goods are due and ready for delivery the Seller may arrange storage of the goods at the Customer's risk and the Customer shall be liable to the Seller for the, reasonable costs (including insurance) of such storage. This provision is without prejudice to any other right which the Seller may have in respect of the Customer's failure to take delivery of the goods or pay for them in accordance with the contract.

9. TERMINATION

If the Customer enters into a deed or arrangement or commits an act of bankruptcy or compounds with his creditors or if a receiving order is made against him or (being a company) it shall pass a resolution or the Court shall make an order that the Customer shall be wound up (otherwise than for the purposes of amalgamation or reconstruction) or shall become subject to an administration order or if a receiver (including an administrative receiver) shall be appointed of any of the assets or undertaking of the Customer or if circumstances shall arise which entitle the Court or a Creditor to appoint a receiver (including an administrative receiver) or a manager or which entitle the Court to make a winding up order or if the Customer takes or suffers any similar action in consequence of debt or if the financial responsibility of the Customer shall in the opinion of the Seller become impaired or if the Customer shall commit any breach of any part of the contract the Seller may without prejudice to its rights and remedies hereunder stop all goods in transit and suspend further deliveries and by notice in writing to the Customer may forthwith terminate the contract.

10. TOLERANCES AND TESTS

Unless otherwise specifically agreed all tests, test pieces and inspections whatsoever required by the Customer will be charged extra. All tests and inspections (whether or not being tests of chemical composition) shall take place under the Seller's standard testing arrangements, and such tests shall be final. All tests are subject to analytical tolerances.

11. PATENTS

The Customer shall indemnify the Seller against all actions, costs (including the cost of defending any legal proceedings) claims proceedings, accounts & damages in respect of any infringement of alleged infringement of any patent, registered design, unregistered design, design right, copyright, trademark or other industrial

or intellectual property rights resulting from compliance by the Seller with the Customer's instructions, whether express or implied.

12. INDEMNITY

The Customer agrees upon demand to indemnify the Seller against all losses, damages, injury, costs and expenses of whatever nature suffered by the Seller to the extent that the same are caused by or related to (i) designs, drawings or specifications given to the Seller by the Customer in respect of goods produced by the Seller for the Customer; or (ii) defective materials or products supplied by the Customer to the Seller and incorporated by the Seller in goods produced by the Seller for the Customer; or (ii) the improper incorporation assembly, use, processing, storage or handling of goods by the Customer.

13. NON-STANDARD ORDERS

Where the Customer orders goods or materials of a type, size or quality not normally produced by the Seller will use all reasonable endeavours to execute the order, but if it proves impossible, impracticable or uneconomical to carry out or complete the order, the Seller reserves the right to cancel the contract or the uncompleted balance thereof in which event the Customer will only be liable to pay for the part thereof actually delivered.

14. PATTERNS, DIES, TOOLS, DRAWINGS & EQUIPMENT

(a) Where the Customer supplies patterns, dies, tools, drawings or equipment the Seller shall be entitled to assume that the same are in good condition, true to drawing and entirely suitable to the Seller's methods of production, and for the production of the goods ordered in the quantities required. (b) While the Seller uses all reasonable endeavours to verify patterns, dies, tools, drawings and equipment supplied by the Customer no responsibility is accepted by the Seller for their accuracy. (c) All replacements, alterations and repairs to the Customer's patterns, dies, tools, drawing and equipment shall be paid for by the Customer. (d) Where the patterns, dies, tools, drawings and equipment are not supplied by the Customer only those which are specially made by the Seller and separately charged to the Customer in full shall, when paid for by the Customer become the property of the Customer. (e) Carriage on patterns, dies, tools and equipment supplied by the Customer will be paid by the Seller in one direction only. (f) The Seller will take all reasonable care of the Customer's patterns, dies, tools, drawings and equipment while in the Seller's possession but does not accept liability for loss or damage thereto, howsoever arising, except where neglect on the part of the Seller or its agents was the direct cause of loss or damage and in those circumstances the Seller's liability shall be limited to the actual cost of replacement or repair to the exclusion of all other expenses, consequential losses, loss of profits and other expenses, liabilities and losses howsoever arising. (g) The Seller reserves the right to destroy or otherwise dispose of patterns, dies, tools, drawings and equipment in its possession of custody (whether or not the property of the Customer) from which the Customer has not required goods to be made for a period of 12 months or more in the case of patterns and three years or more in all other cases.

15. PACKING

The Seller uses its best endeavours to ensure, where necessary suitability of packing before despatch but no claim will be accepted by the Seller for breakage or damage in transit on the ground of alleged unsuitability for packing.

16. SUB-CONTRACTING

The Seller shall be entitled to sub-contract any work relating to the contract without obtaining the consent of, or giving notice to, the customer.

17. APPLICABLE LAW

The contract shall in all respects be governed by and construed in accordance with English Law and the Customer hereby submits to the non-exclusive jurisdiction of the English Courts.



**CONTACT
US!**

Spear & Jackson UK Ltd.

Atlas Way, Atlas North
Sheffield S4 7QQ
England

Tel: +44 (0)1142 814242

Fax: +44 (0)1142 814252

Email: sales@spear-and-jackson.com

www.spear-and-jackson.com



www.carbonbalancedprint.com
CBP2225



Printed on
recyclable material

Spear & Jackson France

Le Coin, 42400 Saint Chamond
ZI BP 82, St Chamond, France

Spear & Jackson Australia

PO BOX 4400
Dandenong South, Victoria 3175
Australia

Spear & Jackson New Zealand

18 Barrhead Place
Avondale, Auckland
New Zealand

CELEBRATING
OVER
260
YEARS
OF EXPERIENCE

Spear & Jackson
Since 1760

SPEAR & JACKSON products are guaranteed against defects in manufacturing, subject to wear and tear and the provision of reasonable care and maintenance.

This does not affect your statutory rights.

Due to continuous product development and improvement, Spear & Jackson reserves the right to modify product design, specifications and materials without prior notice.