



Eclipse Compact Series Riveters
and Threaded Insert Tools

MORE POWER LESS EFFORT



Eclipse Spiralux is recognised as a brand leader for hand riveters, with a well established range that is sold in markets across the globe.

The **NEW Eclipse Compact Series Riveters** range has been developed to complement the existing range. Smaller and lighter than traditional hand riveters these products are equally strong and durable, they are quick and easy to use and require considerably less physical effort to pop rivets.



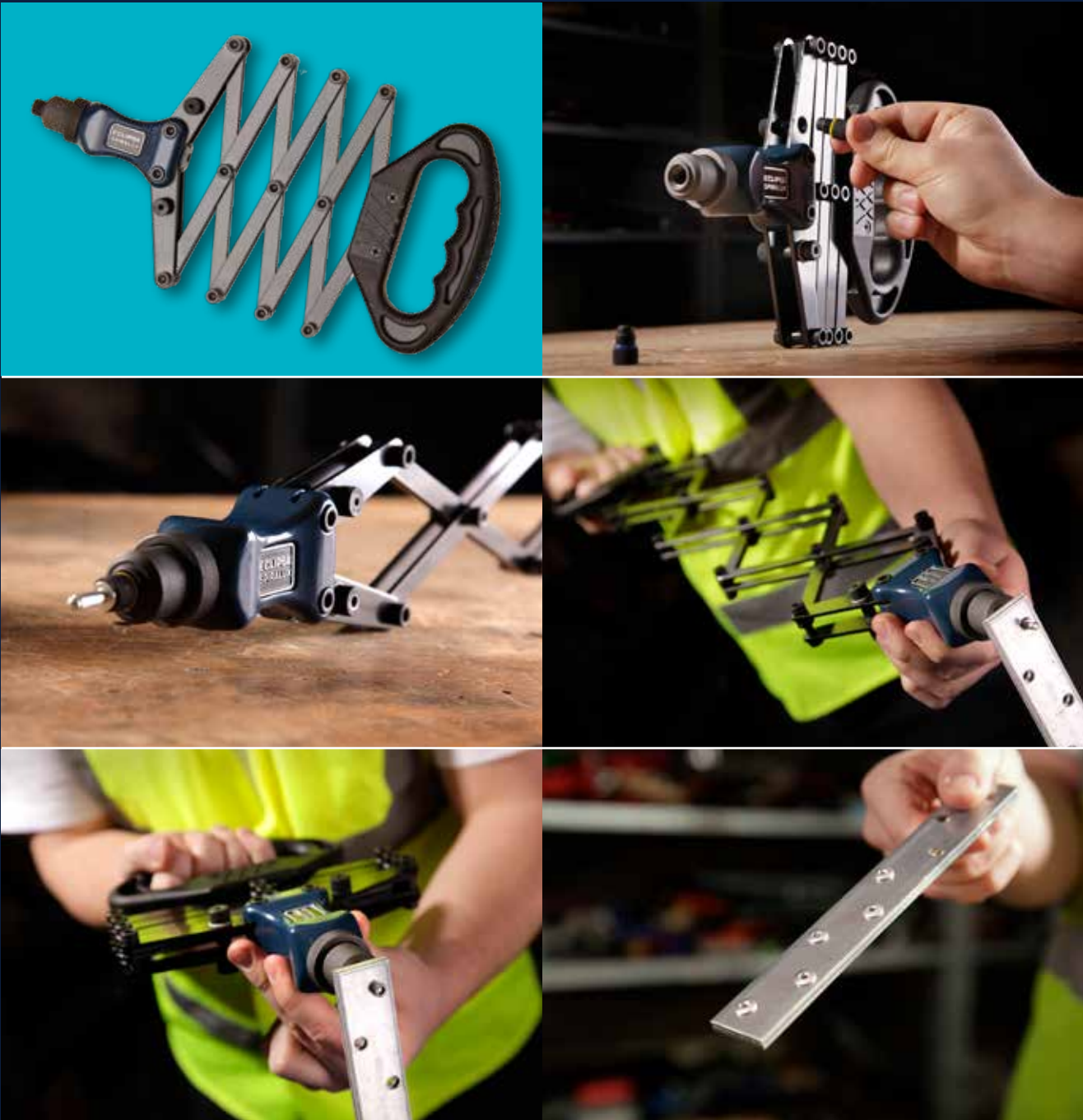
2750C

ECLIPSE COMPACT LAZY TONG RIVETER

2750C

COMPACT LAZY TONG RIVETER

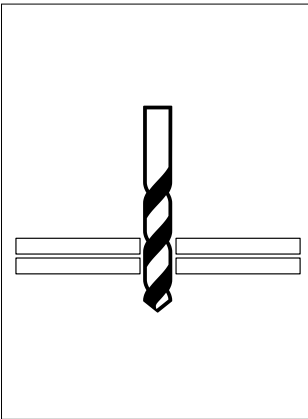
- 25% lighter, smaller and easier to handle than traditional sized lattice riveters
- The 2750C weighs 1.50Kg compared to a 1.90Kg traditional lattice riveter
- Delivers more power with less effort
- Much easier on the arms and shoulders when popping lots of rivets



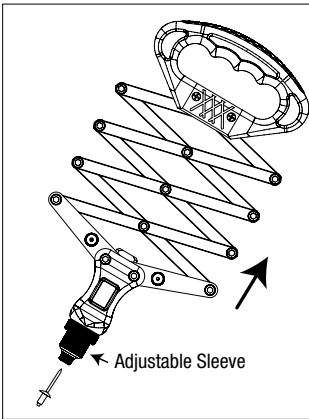
SPECIFICATIONS

- Strong 3-piece alloy steel jaw mechanism with hexagonal internal structure for a longer life and easy operating
- Aluminium alloy ergonomic design body and ABS handle for comfortable handling
- Lattice section is held together with nuts and bolts for extra strength and durability
- Manually adjustable round knurling sleeve to easily adjust the working length of each stroke, ideal for use in restricted spaces
- Pops up to 6.4mm Aluminium, Steel and Stainless Steel rivets
- Contains rivet noses for use with 2.4mm, 3.2mm, 4.0mm, 4.8mm and 6.4mm aluminium and steel rivets
- Noses are colour coded by size for easy identification and may be conveniently changed by hand with no need for extra tools
- To operate, pre-drill holes into the items being joined together, the optimum drill size is 0.1mm bigger than the size of the rivet
- Spare replacement jaws and noses are available

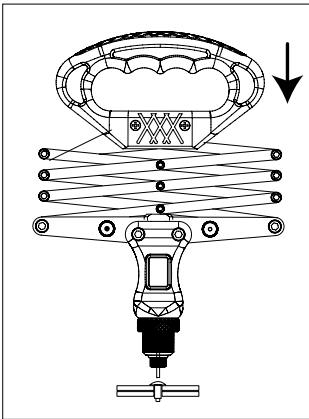
USER INSTRUCTIONS



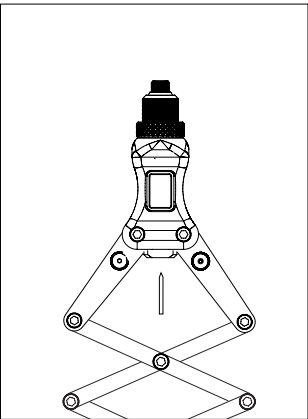
Drill hole through materials to be riveted.



Extend Lazy Tong Riveter, insert rivet and adjust sleeve if required.



Align rivet, push handle to fix rivet. Repeat until rivet snaps and then remove riveter.



Open lattice fully to remove rivet stem.

PRODUCT CODES & SPARE PARTS

Part no.	Description	Bar Code	QTY
2750C	Compact Lazy Tong Riveter	5012095617815	5
CS-SJ3	Jaw Set (x3)	5012095619246	1
CS-SNB24	Nose Bush 2.4mm (3/32")	5012095619192	1
CS-SNB32	Nose Bush 3.2mm (1/8")	5012095619215	1
CS-SNB40	Nose Bush 4.0mm (5/32")	5012095619208	1
CS-SNB48	Nose Bush 4.8mm (3/16")	5012095619222	1
CS-SNB64	Nose Bush 6.4mm (1/4")	5012095619239	1

COLOUR CODED RIVET SIZES

Colour Code	Rivet Sizes	Drill Sizes
Red	2.4mm (3/32")	2.5mm
Green	3.2mm (1/8")	3.3mm
Blue	4.0mm (5/32")	4.1mm
Yellow	4.8mm (3/16")	4.9mm
Grey	6.4mm (1/4")	6.5mm

PERFORMANCE ON TEST

2750C versus traditional Lattice Style Riveters

Popping 200 x 5mm Aluminium Rivets			
2750C		Traditional Lattice Style Riveter	
Kgf Force	Pulls	Kgf Force	Pulls
8.2	2	11.5	1-2

Popping 10 x 6mm Aluminium Rivets			
2750C		Traditional Lattice Style Riveter	
Kgf Force	Pulls	Kgf Force	Pulls
14	2-3	20	2

Popping 10 x 5mm Steel Rivets			
2750C		Traditional Lattice Style Riveter	
Kgf Force	Pulls	Kgf Force	Pulls
13.1	3	20	2



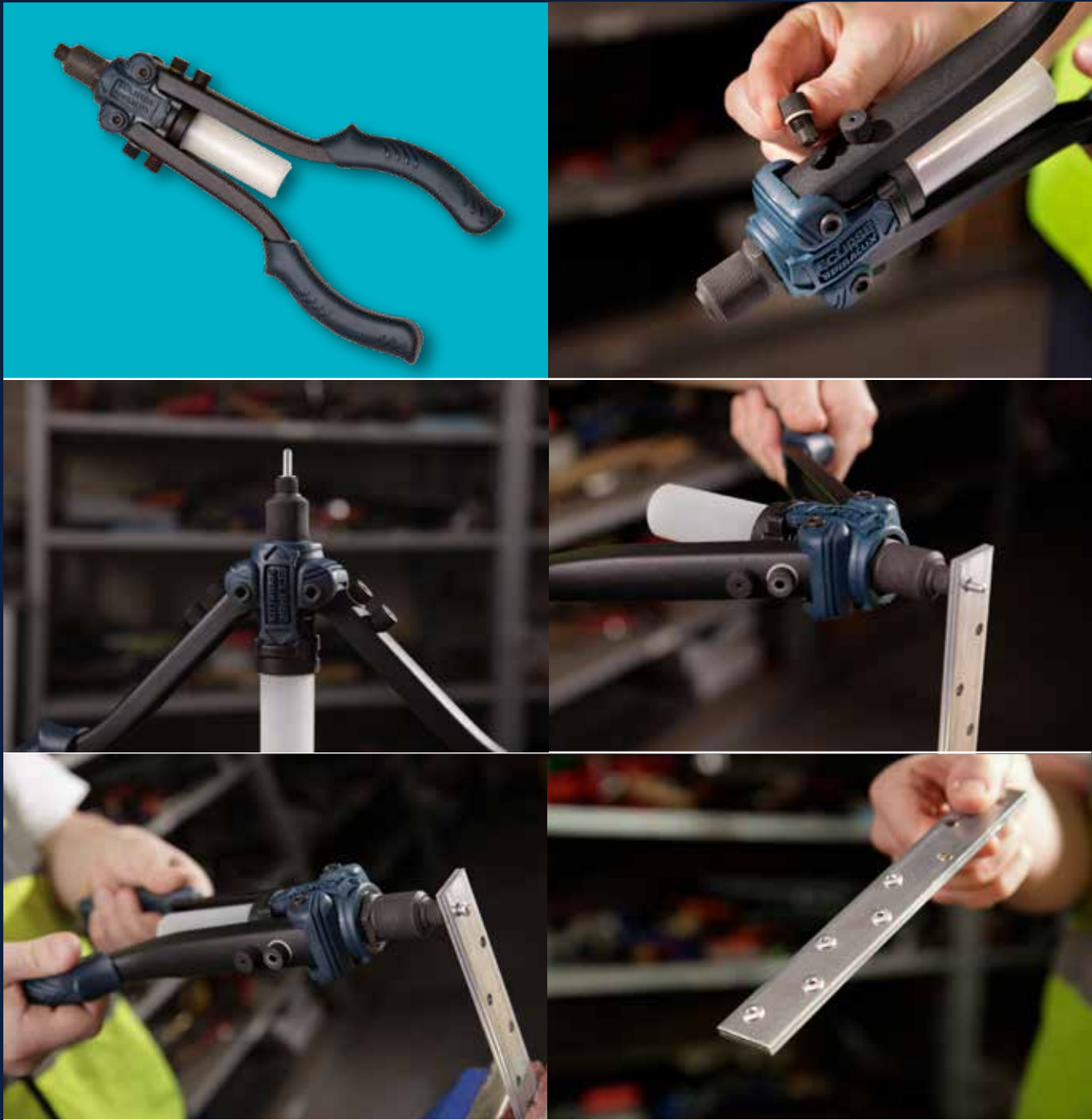
2760C

ECLIPSE COMPACT LEVER ARM

2760C

COMPACT LEVER ARM RIVETER

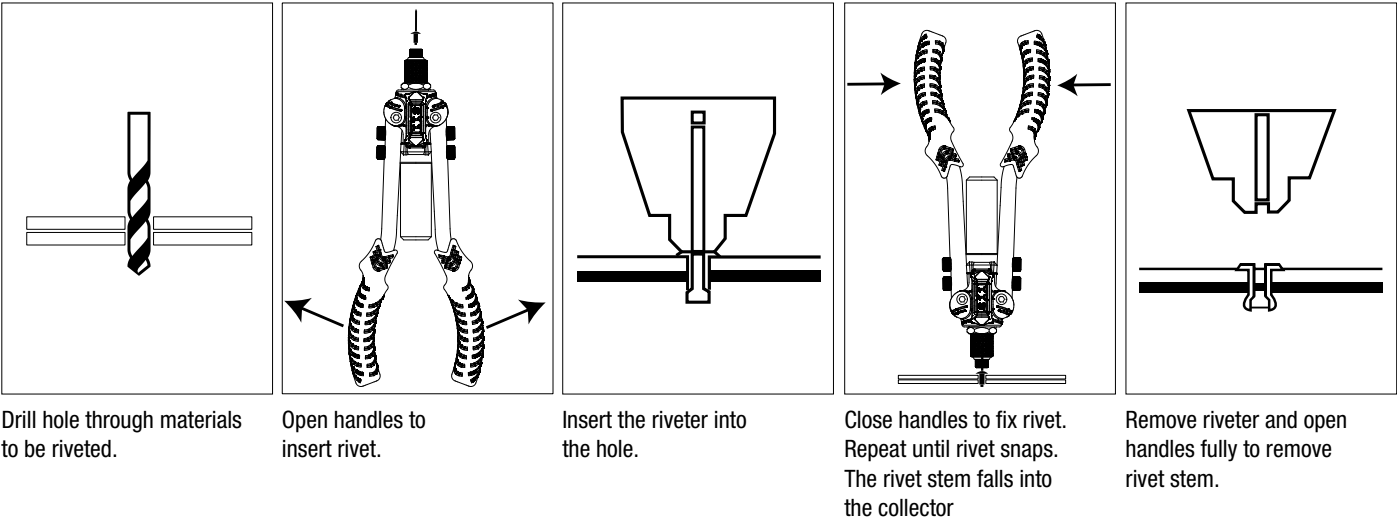
- Up to 40% Lighter and more compact in size than traditional long arm riveters
- Requires less effort and is easier to use
- Much easier on the arms and shoulders when popping lots of rivets



SPECIFICATIONS

- Strong 3-piece alloy steel jaw mechanism with hexagonal internal structure for a longer life and easy operating
- Reinforced 2mm thick Carbon Steel heat-treated handle for extra strength and durability
- Ergonomically designed handles for comfortable use
- Features a convenient rivet stem collector for protection and safety
- Contains rivet noses for use with 2.4mm, 3.2mm, 4.0mm, 4.8mm and 6.4mm aluminium and steel rivets
- Noses are colour coded by size for easy identification and may be conveniently changed by hand with no need for extra tools
- To operate, pre-drill holes into the items being joined together, the optimum drill size is 0.1mm bigger than the size of the rivet
- Spare replacement jaws and noses are available

USER INSTRUCTIONS



PRODUCT CODES & SPARE PARTS

Part no.	Description	Bar Code	QTY
2760C	Compact Lever Arm Riveter	5012095617822	5
CS-SJ3	Jaw Set (x3)	5012095619246	1
CS-SNB24	Nose Bush 2.4mm (3/32")	5012095619192	1
CS-SNB32	Nose Bush 3.2mm (1/8")	5012095619215	1
CS-SNB40	Nose Bush 4.0mm (5/32")	5012095619208	1
CS-SNB48	Nose Bush 4.8mm (3/16")	5012095619222	1
CS-SNB64	Nose Bush 6.4mm (1/4")	5012095619239	1

COLOUR CODED RIVET SIZES

Colour Code	Rivet Sizes	Drill Sizes
Red	2.4mm (3/32")	2.5mm
Green	3.2mm (1/8")	3.3mm
Blue	4.0mm (5/32")	4.1mm
Yellow	4.8mm (3/16")	4.9mm
Grey	6.4mm (1/4")	6.5mm

PERFORMANCE ON TEST

2760C versus traditional Long Arm Riveters

Popping 200 x 5mm Aluminium Rivets			
2760C		Traditional Long Arm Riveter	
Kgf Force	Pulls	Kgf Force	Pulls
9.7	2	9.8	1

Popping 10 x 6mm Aluminium Rivets			
2760C		Traditional Long Arm Riveter	
Kgf Force	Pulls	Kgf Force	Pulls
17.3	2	19.1	2

Popping 10 x 5mm Steel Rivets			
2760C		Traditional Long Arm Riveter	
Kgf Force	Pulls	Kgf Force	Pulls
16.8	2-3	17.3	3



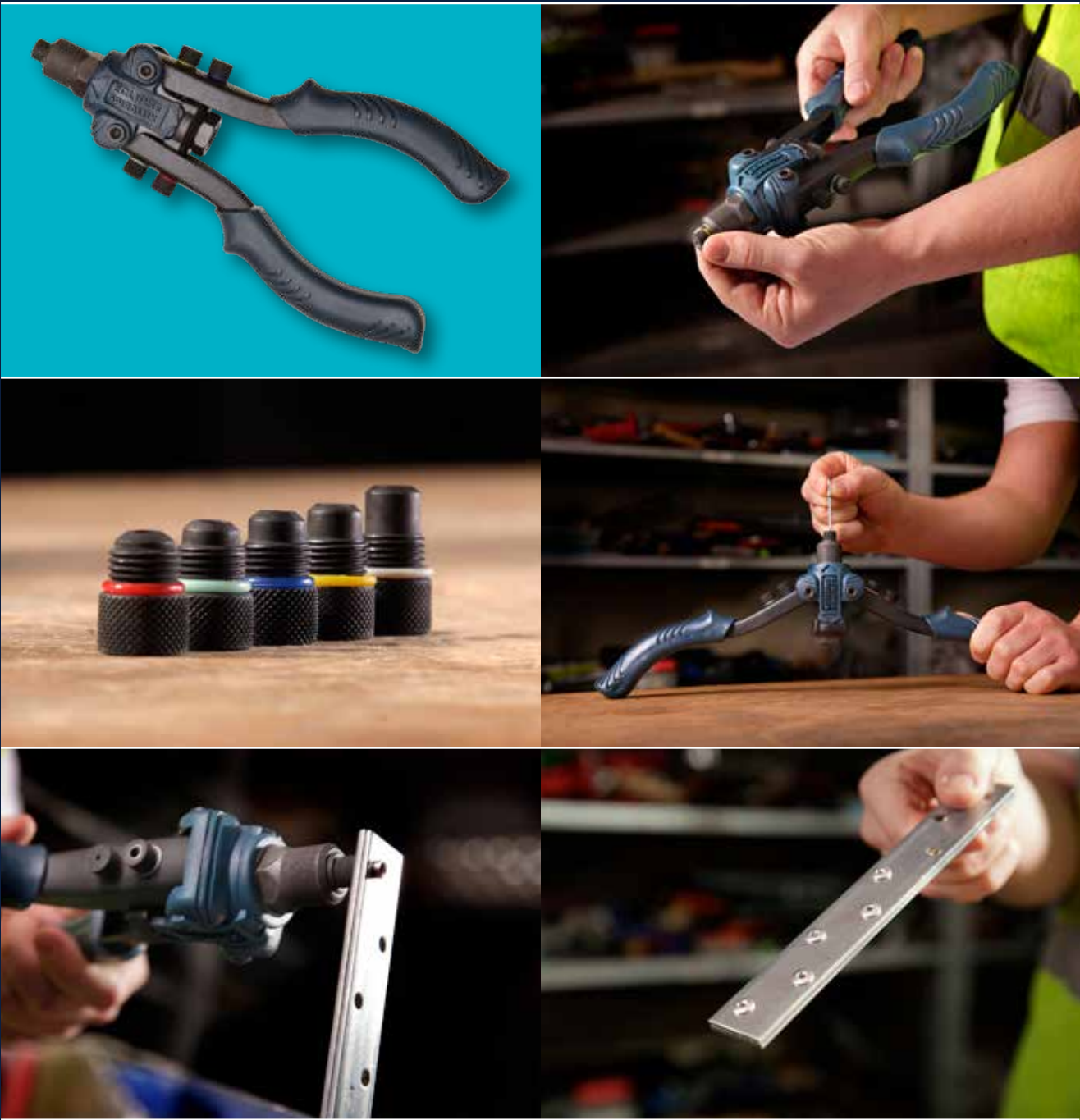
2760C-M

ECLIPSE COMPACT MINI LEVER ARM RIVETER

2760C-M

COMPACT MINI LEVER ARM RIVETER

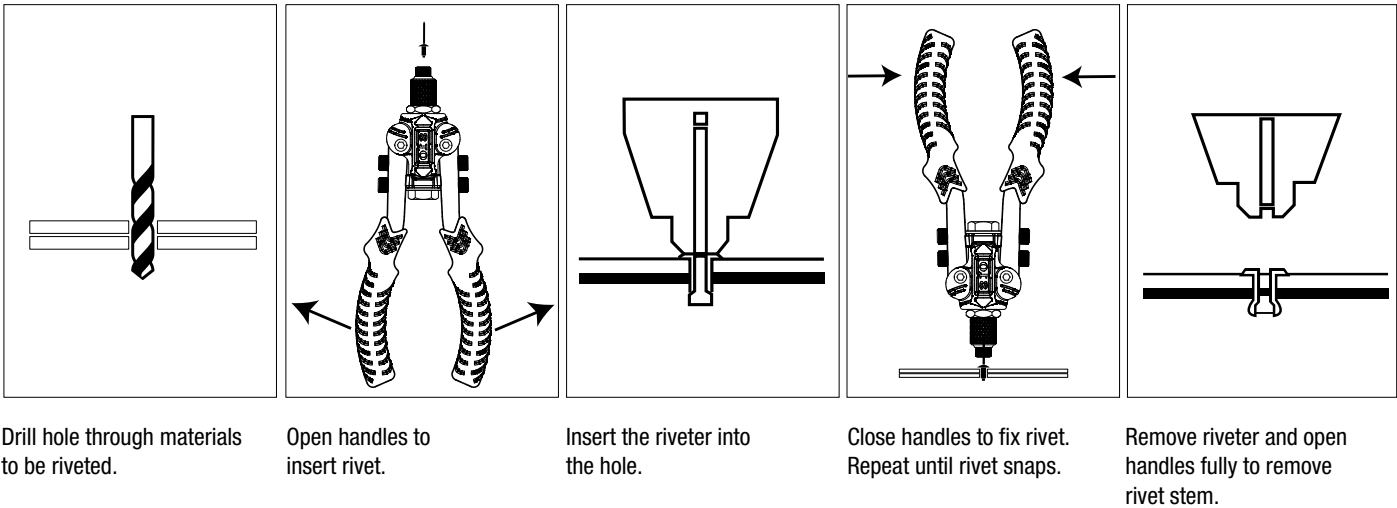
- | Less than half the weight and size of a traditional long arm riveter
- | Perfect for use in restricted spaces, fits conveniently into toolboxes
- | Requires less effort and is easier to use than traditional gun type riveters
- | Easier on the arms and shoulders when popping lots of rivets



SPECIFICATIONS

- Strong 3-piece alloy steel jaw mechanism with hexagonal internal structure for a longer life and easy operating
- Reinforced 2mm thick Carbon Steel heat-treated handle for extra strength and durability
- Ergonomically designed handles for comfortable use
- Contains rivet noses for use with 2.4mm, 3.2mm, 4.0mm, 4.8mm and 6.4mm aluminium and steel rivets
- Noses are colour coded by size for easy identification and may be conveniently changed by hand with no need for extra tools
- To operate, pre-drill holes into the items being joined together, the optimum drill size is 0.1mm bigger than the size of the rivet
- Spare replacement jaws and noses are available

USER INSTRUCTIONS



COLOUR CODED RIVET SIZES

Colour Code	Rivet Sizes	Drill Sizes
Red	2.4mm (3/32")	2.5mm
Green	3.2mm (1/8")	3.3mm
Blue	4.0mm (5/32")	4.1mm
Yellow	4.8mm (3/16")	4.9mm
Grey	6.4mm (1/4")	6.5mm

PERFORMANCE ON TEST

2760C-M versus traditional Gun Riveters

Popping 10 x 5mm Aluminium Rivets			
2760C-M		Traditional Gun Riveter	
Kgf Force	Pulls	Kgf Force	Pulls
12.6	2	31.5	4

PRODUCT CODES & SPARE PARTS

Part no.	Description	Bar Code	Quantity
2760C-M	Compact Mini Lever Arm Riveter	5012095617839	5
CS-SJ3	Jaw Set (x3)	5012095619246	1
CS-SNB24	Nose Bush 2.4mm (3/32")	5012095619192	1
CS-SNB32	Nose Bush 3.2mm (1/8")	5012095619215	1
CS-SNB40	Nose Bush 4.0mm (5/32")	5012095619208	1
CS-SNB48	Nose Bush 4.8mm (3/16")	5012095619222	1
CS-SNB64	Nose Bush 6.4mm (1/4")	5012095619239	1

2730C

COMPACT SERIES SNUB NOSE GUN RIVETER

SPECIFICATIONS

- Ideal for working in restricted spaces
- Smaller and lighter in weight than traditional gun riveters so easier on the arms when popping lots of rivets
- 3-piece alloy steel jaw mechanism with internal hexagonal grip
- Interchangeable nose bush, colour-coded for easy identification. In 2.4, 3.2, 4.0 and 4.8mm sizes
- Secure locking clip
- Capable of popping up to 4mm rivets in Steel and Stainless Steel, and 4.8mm rivets in Aluminium only
- Overall Length: 210mm
- Weight: 0.51Kg



Part no.	Description	Bar Code	Quantity
2730C	Compact Series Snub Nose Riveter	5012095625100	5



2745C

COMPACT THREADED INSERT TOOL KIT (M3-M10)

COMPACT THREADED INSERT TOOL KIT (M3-M10)

The Compact Series has been developed to complement the more traditional range. Easily sets up to M10 Nutserts with more power and less effort than traditional Insert Tools

Allows thin sheet nutserts to be placed quickly and easily by hand. They are invaluable to Plant and Maintenance Engineers, and also for DIY, for simple assembly of threaded inserts or anchor nuts.



SPECIFICATIONS

- Easily sets up to M10 Nutserts with more power and less effort than traditional Insert Tools
- Creates a strong, permanent and reliable threaded fixing for use with bolts, studs and screws etc.
- Ideal for inserting threaded nuts into steel, aluminium, plastic and wood
- Suitable for steel, stainless steel and aluminium nutserts
- Colour coded mandrels for easy selection
- Steel body, Chrome Molybdenum alloy steel mandrels and reinforced 2mm heat treated Carbon steel handles for strength and durability
- Features a knurled carbon steel knob to easily unload nutserts
- Small and compact. Ideal for restricted areas
- Ergonomic handles for extra comfort
- Requires access to only one side of the workpiece

2745C - User instructions

1

2

3

4

5

Pre-drill appropriate size hole in the material to be inserted

Open the handles and fit nutsert onto mandrel

Insert tool into pre-drilled hole

Close the handles to set nut in position

Open the handles and turn the knob clockwise to unload the insert tool from the inserted nut

- Kit Contents:**
- Threaded Insert Tool x 1
 - Interchangeable Mandrels x 6: M3, M4, M5, M6, M8 and M10
 - Multi-functional spanner x 1



*Typical drill hole sizes		
Mandrel Sizes		Drill Sizes
M3		4.8mm
M4		6.5mm
M5		7.2mm
M6		9.6mm
M8		10.6mm
M10		13.1mm

*Check with nutsert supplier for appropriate hole size.

Part no.	Description	Bar Code	Quantity
2745C	Compact Threaded Insert Tool Kit (M3-M10)	5012095619437	5

2746C-HD

COMPACT HEAVY DUTY THREADED INSERT TOOL KIT (M3-M12)

2746C-HD

COMPACT HEAVY DUTY THREADED INSERT TOOL KIT (M3-M12)

The Compact Series has been developed to complement the more traditional range. Easily sets up to M12 Nutserts with more power and less effort than traditional Insert Tools

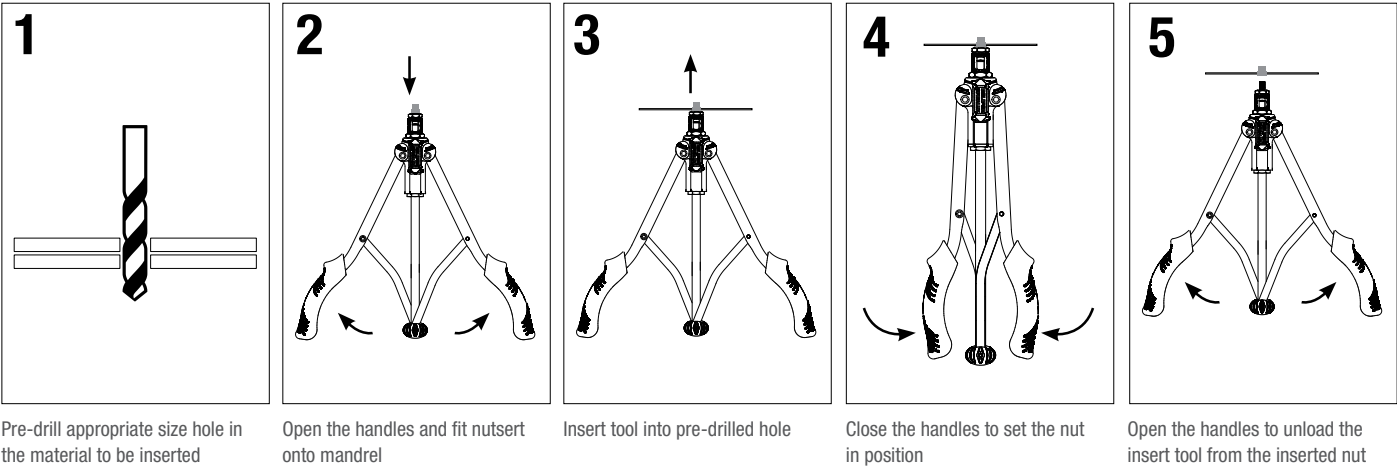
Allows thin sheet nutserts to be placed quickly and easily by hand. They are invaluable to Plant and Maintenance Engineers, and also for DIY, for simple assembly of threaded inserts or anchor nuts.



SPECIFICATIONS

- Easily sets up to M12 Nutserts with more power and less effort than traditional Insert Tools
- Creates a strong, permanent and reliable threaded fixing for use with bolts, studs and screws etc.
- Ideal for inserting threaded nuts into steel, aluminium, plastic and wood
- Suitable for steel, stainless steel and aluminium nutserts
- Colour coded mandrels for easy selection
- Special rod structure between the handles makes it much easier to load and unload nutserts, saving time and effort in the workshop
- Steel body, Chrome Molybdenum alloy steel mandrels and reinforced 2mm heat treated Carbon steel handles for strength and durability
- Ergonomic handles for extra comfort
- Requires access to only one side of the workpiece so ideal for restricted spaces

2746C-HD - User instructions



- Kit Contents:**
- Threaded Insert Tool x 1
 - Interchangeable Mandrels x 7: M3, M4, M5, M6, M8, M10 and M12
 - Multi-functional spanner x 1
 - Nutserts: M3, M4, M5, M6, M8, M10 and M12 (x5 of each)

*Typical drill hole sizes		
Mandrel Sizes		Drill Sizes
M3		4.8mm
M4		6.5mm
M5		7.2mm
M6		9.6mm
M8		10.6mm
M10		13.1mm
M12		16.1mm
*Check with nutsert supplier for appropriate hole size.		

Part no.	Description	Bar Code	Quantity
2746C-HD	Compact Heavy Duty Threaded Insert Tool Kit (M3-M12)	5012095619444	5



Compact Riveters and Threaded Insert Tools

Available from all good professional tools stockists

CELEBRATING
OVER
100
YEARS
OF EXPERIENCE

**CONTACT
US!**

GLOBAL CUSTOMER SERVICE CENTRE

Neill Tools Ltd.

A Spear & Jackson Group Company

Atlas Way, Atlas North

Sheffield S4 7QQ, England

Tel: +44 (0)1142 814 242

Fax: +44 (0)1142 814252

Email: sales@eclipse-tools.com (Non-UK Markets)

Email: sales@spear-and-jackson.com

Follow us on:



FIND OUT MORE AT www.eclipse-tools.co.uk

EC-RIVETERA4



THE TOOLS
TO TRUST

